

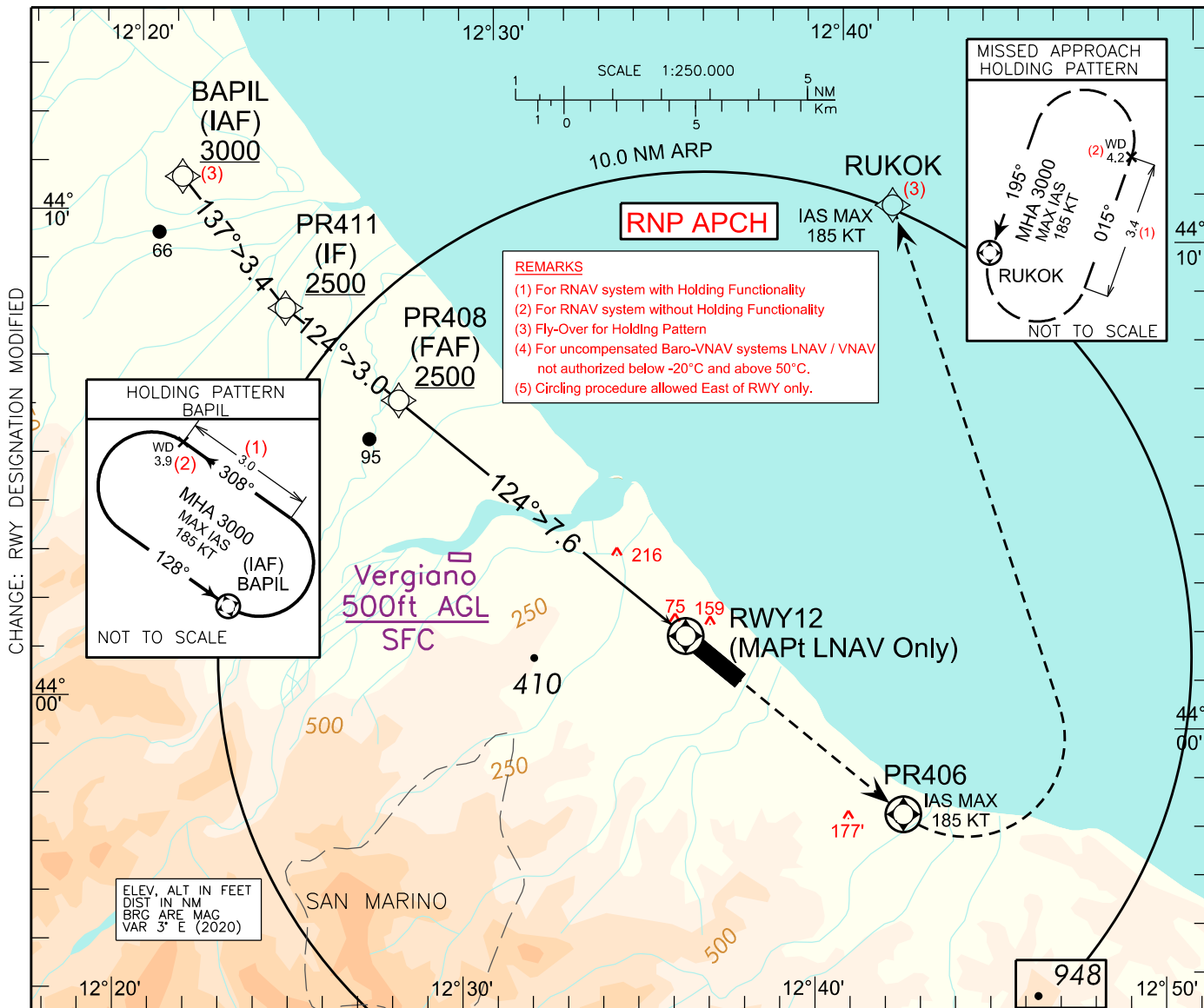
INSTRUMENT APPROACH CHART - ICAO

EGNOS
CH 43685
E12A

AERODROME
ELEV 41

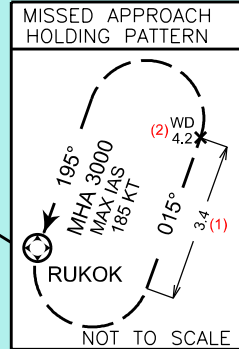
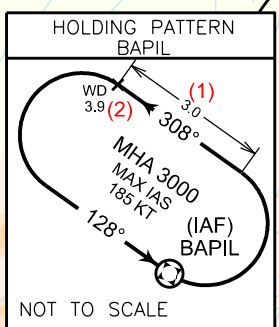
APP Bologna APP/Radar CH 118.150 (133.775)
TWR Rimini TWR 131.225

RIMINI/Miramare (LIPR)
RNP RWY 12



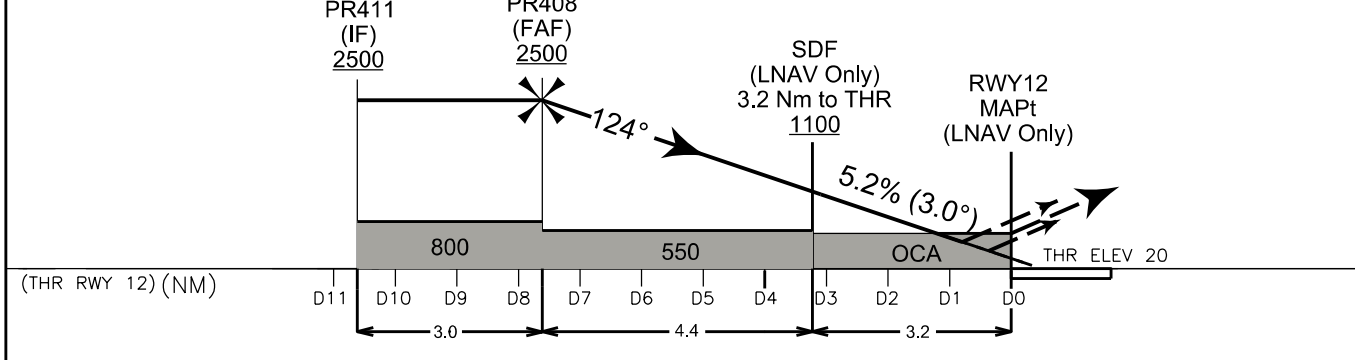
CHANGE: RWY DESIGNATION MODIFIED

REMARKS
(1) For RNAV system with Holding Functionality
(2) For RNAV system without Holding Functionality
(3) Fly-Over for Holding Pattern
(4) For uncompensated Baro-VNAV systems LNAV / VNAV not authorized below -20°C and above 50°C.
(5) Circling procedure allowed East of RWY only.



ELEV. ALT IN FEET
DIST IN NM
BRG ARE MAG
VAR 3° E (2020)

TRANSITION ALT 6000	MISSED APPROACH: Climbing to 3000 FT, proceed straight ahead direct to PR406. Turn Left (IAS MAX 185 Kt) direct to RUKOK. Hold as published.
TCH 15M	
VPA 3°	



STRAIGHT IN APPROACH	OCA (OCH)				REMARK: (5) Circling procedure allowed East of RWY only.	GS	FT/MIN	THR 12	ALT (HGT)	MNM SECT ALT 25 NM ARP 6500
	A	B	C	D						
LNAV/VNAV	LPV	270 (250)	270 (250)	270 (250)	NOT ALLOWED	70	372	D 7	2299 (2279)	
	LNAV	410 (390)	420 (400)	430 (410)		440 (420)	90	478	D 6	1980 (1960)
		500 (480)					110	584	D 5	1662 (1642)
CIRCLING (5)	650 (609)	700 (659)	910 (869)			130	690	D 4	1344 (1324)	
						150	797	D 3	1025 (1005)	
					170	903	D 2	707 (687)		
					190	1009	D 1	388 (368)		
					210	1115				