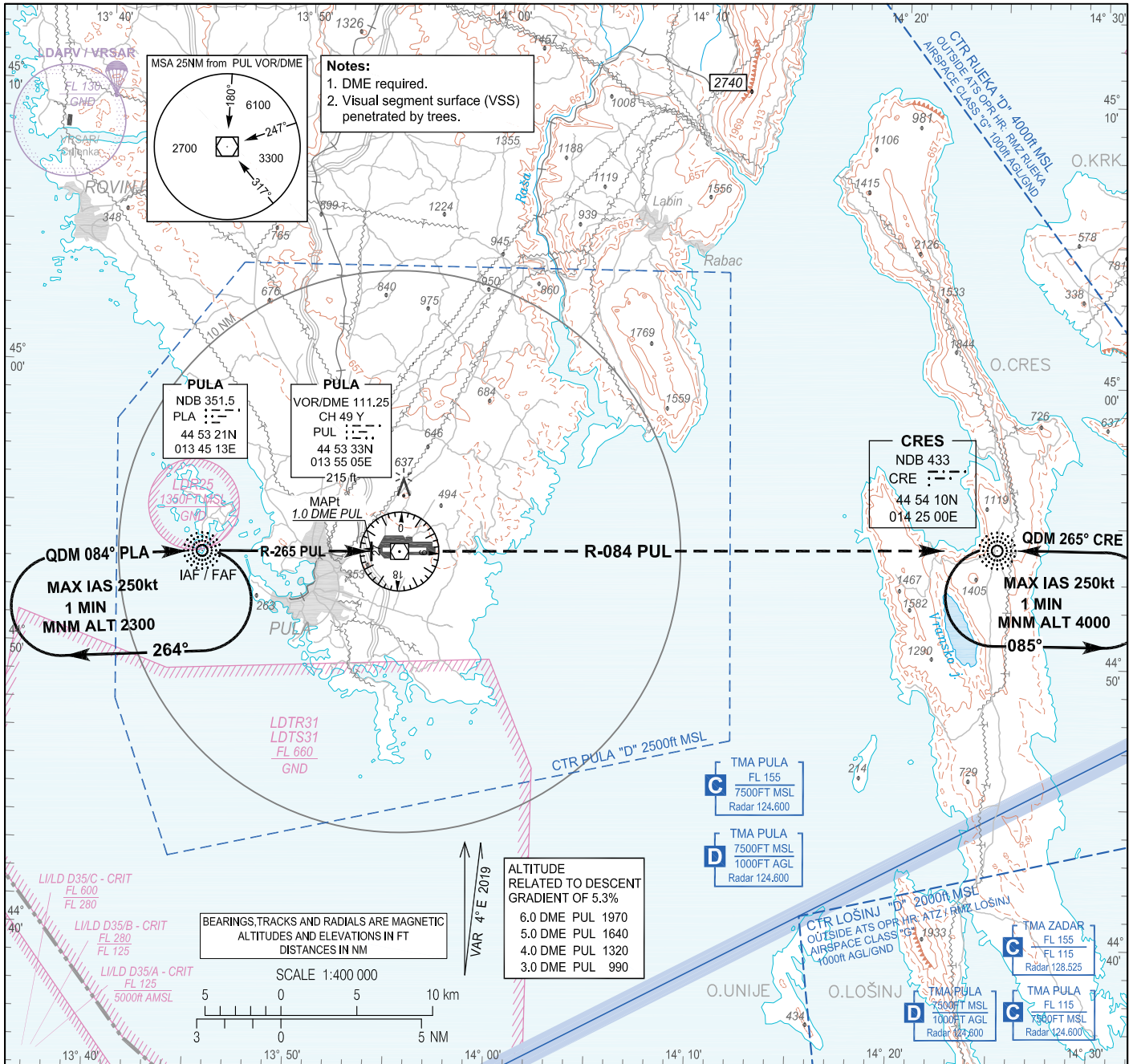


INSTRUMENT APPROACH
CHART-ICAO

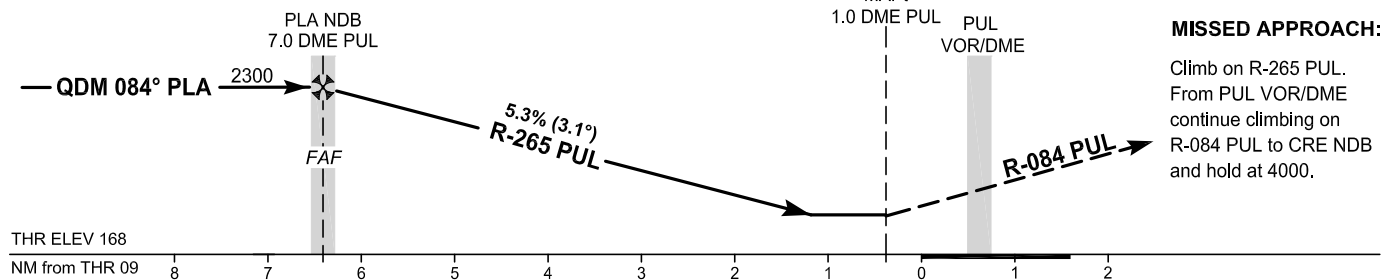
AD ELEV 275
HEIGHTS RELATED
TO THR 09 ELEV 168

PULA ATIS	129.150
PULA RADAR	127.675
PULA TOWER	132.000

PULA / Puła (LDPL)
VOR RWY 09



TRANSITION ALT 10 000



OCA(H)	A	B	C	D
Straight-in Approach	670 (510)			
Circling	860 (590)	950 (680)	1110 (840)	1190 (920)

FAF to MAPt distance 6.0 NM Timing not authorized for defining the MAPt						
GS (kt)	80	100	120	140	160	180
min:sec	4:31	3:37	3:01	2:35	2:16	2:01
Rate of descent (ft/min)	433	541	650	758	866	974

CHANGE: LDTR17, LDTR18 and LDTR31 areas withdrawn; New LDTR31 and LDTR31 areas added.

PULA / Pula (LDPL)

VOR RWY 09

AERONAUTICAL DATABASE REQUIREMENTS

Conventional procedure essential fixes/points

VOR RWY 09

Final approach descent angle: 3.06°

Fix identification	Coordinates	True bearing or ARC distance providing track	True bearing or distance providing intersection
IAF (PLA NDB)	445321.15N 0134512.66E	-	-
FAF (PLA NDB)	445321.15N 0134512.66E	268.51° PUL VOR	7.02 DME PUL
MAPt	445331.0N 0135340.9E	268.51° PUL VOR	1.00 DME PUL

CHANGE: LDTR17, LDTS17, LDTR18 and LDTS18 areas withdrawn; New LDTR31 and LDTS31 areas added.