

STANDARD DEPARTURE CHART-INSTRUMENT

RJTE / TATEYAMA

SID

TATEYAMA REVERSAL THREE DEPARTURE

RWY 09 : Climb RWY HDG to 500FT, turn left HDG266°...

RWY 27 : Climb RWY HDG to 500FT, turn right...

... to intercept and proceed via TET R311 to 6.4DME, turn left direct to TET TACAN.

Cross TET R311/6.4DME at or below 3000FT, cross TET TACAN at assigned altitude.

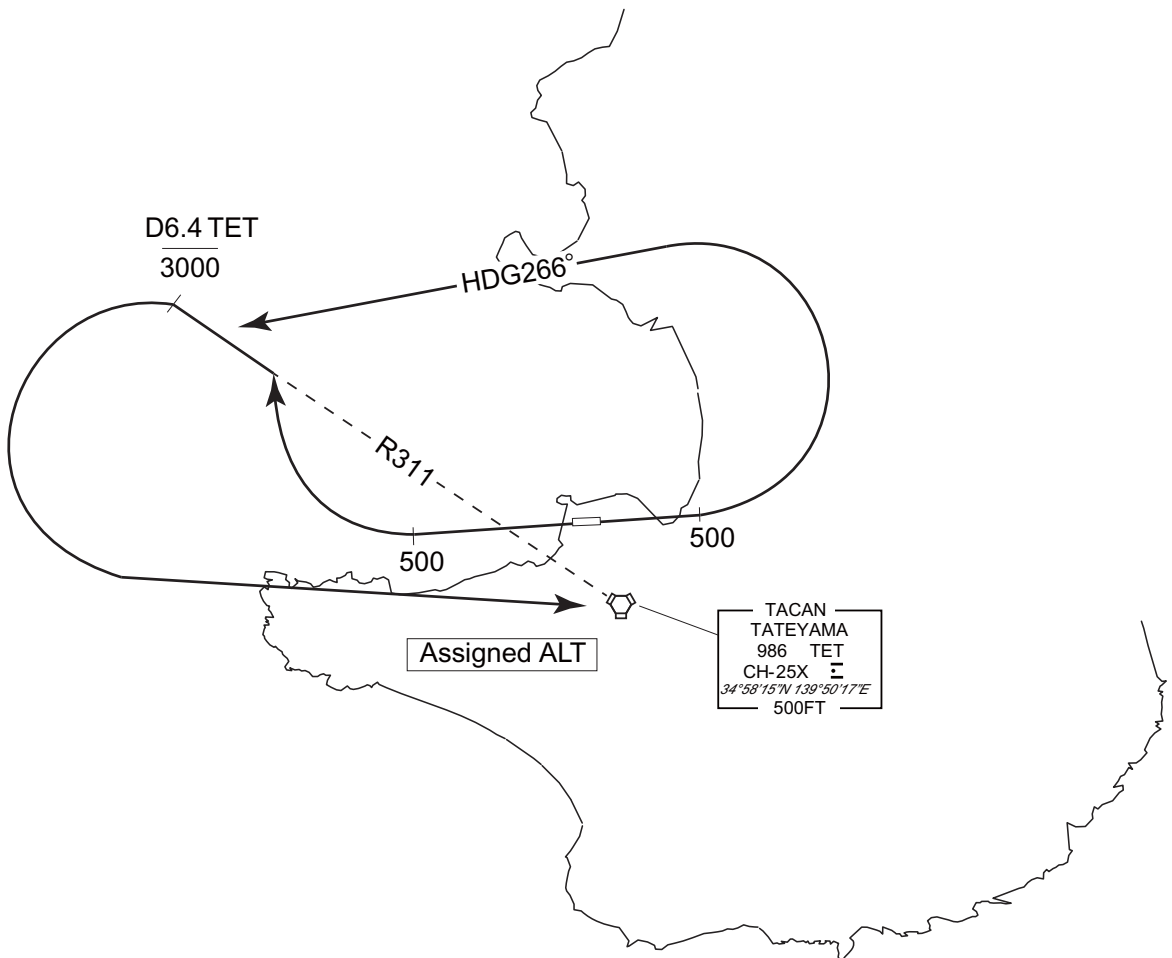
Note RWY09 : 6.0% climb gradient required up to 500FT.

OBST ALT 191FT located at 0.6NM 071° FM end of RWY09.

Note RWY27 : 4.0% climb gradient required up to 800FT.

OBST ALT 525FT located at 3.2NM 261° FM end of RWY27.

CHANGE : PROC renamed. TATEYAMA WEST TWO DEPARTURE abolished. PROC course. Note added.



INTENTIONALLY LEFT BLANK