

# HI-VOR Z RWY 32

MARCH ARB (KRIV)

VOR HDF <b>112.05</b>	APCH CRS <b>315°</b>	Rwy Idg <b>13,302</b> TDZE <b>1497</b> Arpt Elev <b>1536</b>
--------------------------	-------------------------	--

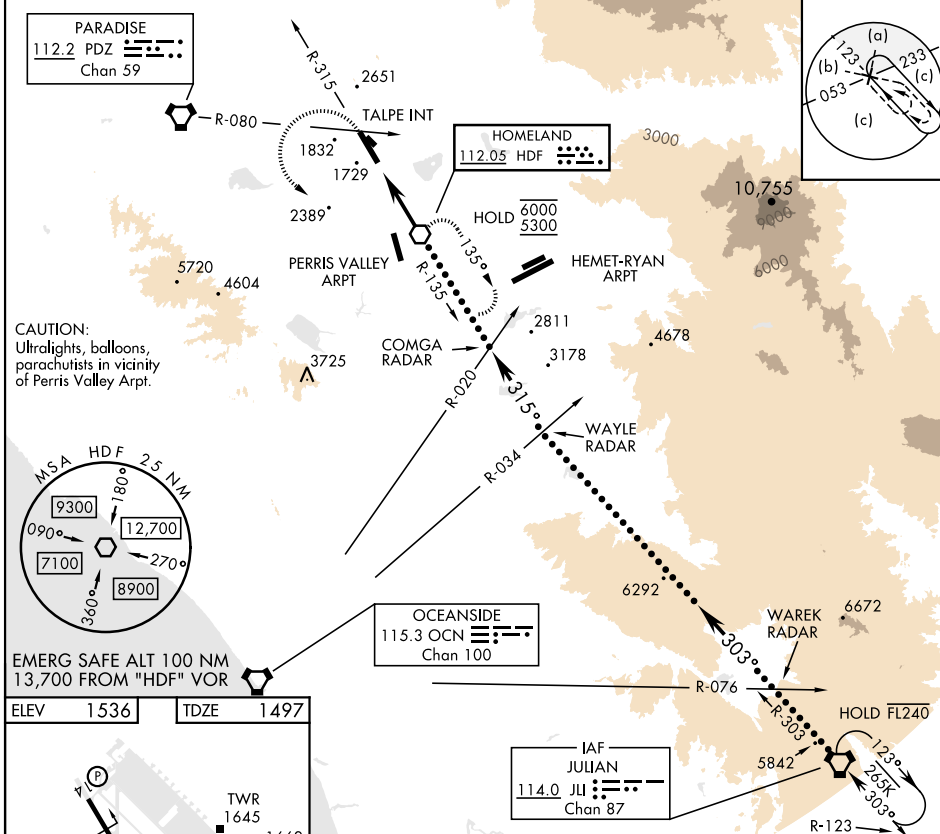
[USAF]

▼ \* When ALS inop, increase CAT CDE vis to 1½ miles.  
 \*\* Circling not authorized NE of Rwy 14-32. Rapid rising terrain.

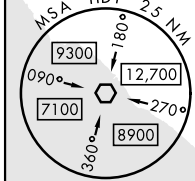


MISSED APPROACH: Climb to 5300 on HDF VOR R-315 to TALPE, then turn left direct HDF, continue climb in hold to 5300.

ATIS <b>134.75 239.05</b>	APP/DEP CON★ <b>133.5 306.975</b>	TOWER <b>127.65 253.5</b>	GND CON <b>121.75 335.8</b>	CLNC DEL <b>127.775 268.7</b>
------------------------------	--------------------------------------	------------------------------	--------------------------------	----------------------------------

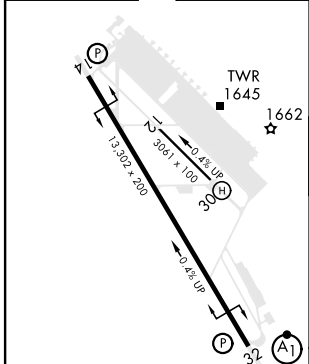


CAUTION:  
Ultralights, balloons,  
parachutists in vicinity  
of Perris Valley Arpt.

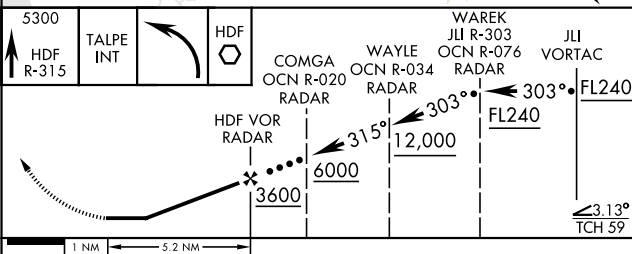


EMERG SAFE ALT 100 NM  
13,700 FROM "HDF" VOR

ELEV	1536	TDZE	1497
------	------	------	------



HIRL Rwy 14-32	FAF to MAP 5.2 NM				
Knots	120	140	160	180	200
Min:Sec	2:36	2:14	1:57	1:44	1:34



CATEGORY	C	D	E
S-32 *	2040/60 543 (600-1½)		
☑ CIRCLING **	2300-2¼ 764 (800-2¼)	2440-3 904 (1000-3)	2840-3 1304 (1400-3)

# HI-VOR Z RWY 32

SW-3, 20 MAR 2025 to 17 APR 2025

SW-3, 20 MAR 2025 to 17 APR 2025