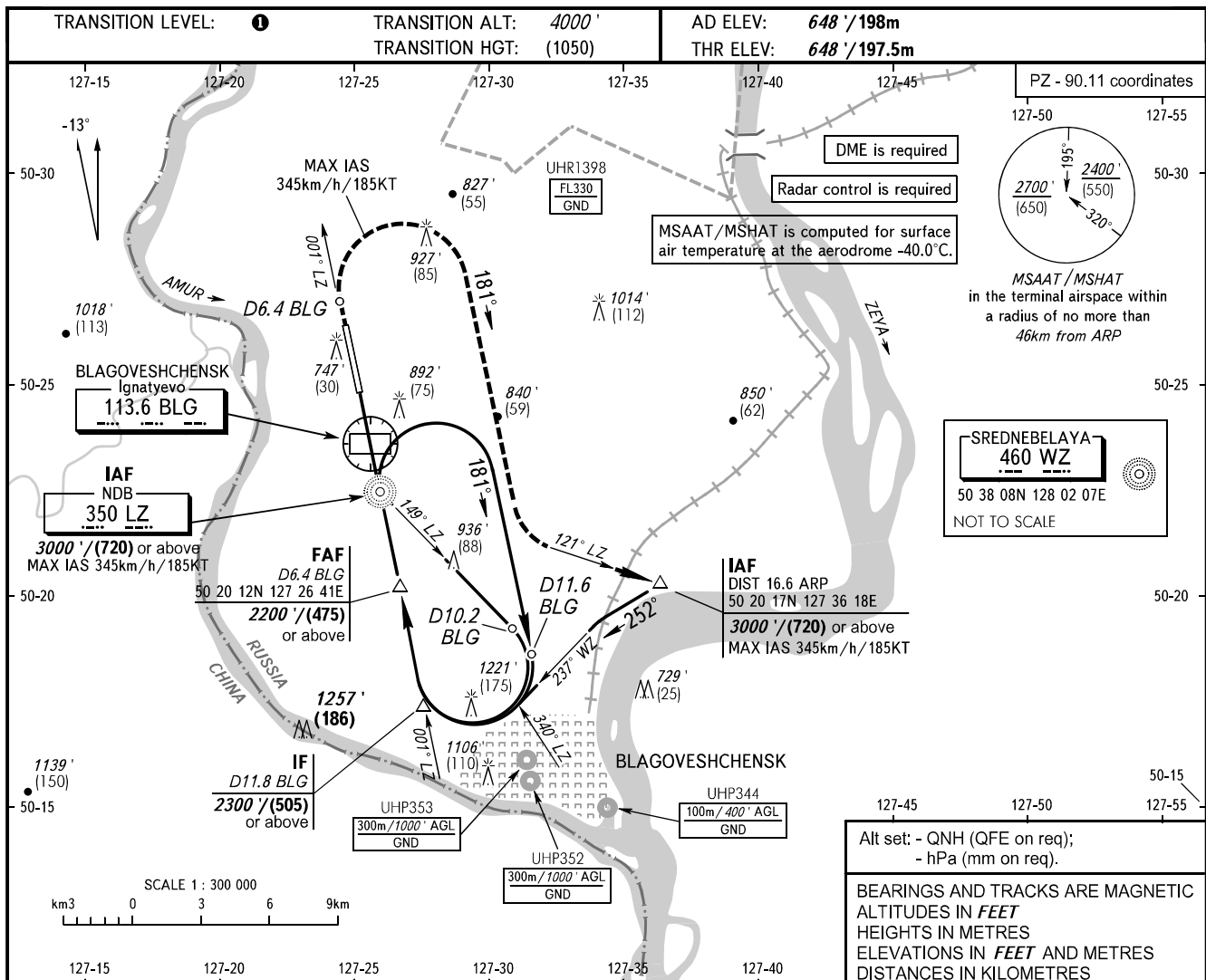


**INSTRUMENT
APPROACH
CHART - ICAO**

BLAGOVESHCHENSK TOWER 127.200

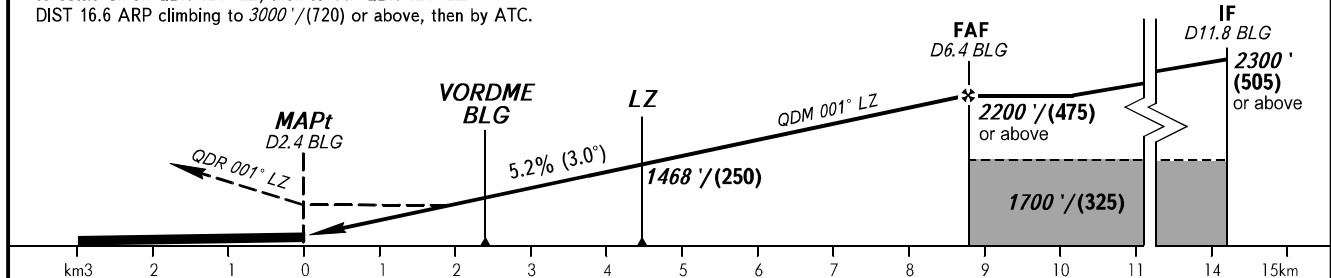
**BLAGOVESHCHENSK, RUSSIA
IGNATYEVO
NDB RWY 36**



MISSED APPROACH

Climb straight ahead to D6.4 BLG, turn RIGHT onto track 181° to establish on QDR 121° LZ, then to IAF QDR 121° LZ
DIST 16.6 ARP climbing to 3000' / (720) or above, then by ATC.

DME BLG	2.0	4.0	6.0
ALTITUDE/HEIGHT	1442' / (242)	1786' / (347)	2130' / (452)



OCA(H)	A	B	C	D				
Straight-in	1140' (490') (150)	1140' (490') (150)	1140' (490') (150)	1140' (490') (150)				
Approach								
Circling	1190' (540') (165)	1220' (570') (175)	1330' (680') (210)	1340' (700') (215)				
GROUND SPEED	km/h	150	180	210	240	270	300	330
	kt	81	97	113	130	146	162	178
RATE OF DESCENT	m/s	2.2	2.6	3.0	3.5	3.9	4.3	4.8
	ft/min	427	512	597	682	768	853	938

1 TRANSITION LEVEL:
- FL050 when QNH is 1013 hPa (760mm mercury column) or above;
- FL060 when QNH is 977 hPa (733mm mercury column) or above, but less than 1013 hPa (760mm mercury column);
- FL070 when QNH is less than 977 hPa (733mm mercury column).

WARNING

FAF - MAPt 8.8km. Timing not authorized for defining MAPt.

Visual manoeuvring to the west of AD is PROHIBITED.

