

FORT DRUM, NEW YORK

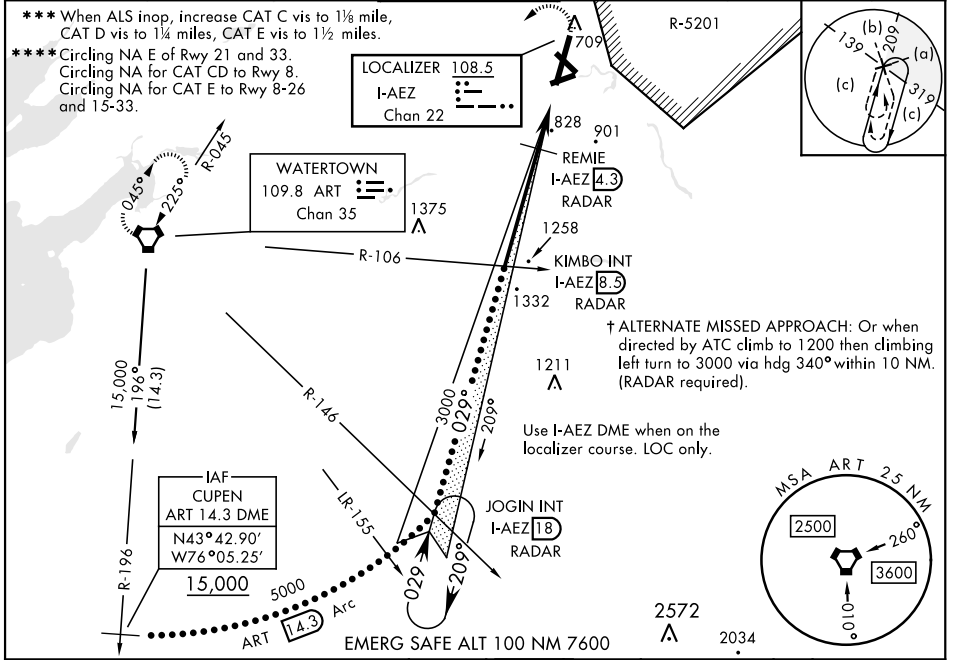
HI-ILS or LOC RWY 3

WHEELER-SACK AAF (KGTB)

LOC/DME I-AEZ 108.5 Chan 22	APCH CRS 029°	Rwy ldg TDZE Arpt Elev 8637 685 690	[USA]
---	-------------------------	---	-------

DME or RADAR required	ALSF-1 	† MISSED APPROACH: Climb to 1200, then climbing left turn to 5000 direct ART VORTAC and hold, continue climb in hold to 5000.
* When ALS inop, increase vis to ¾ mile. ** When ALS inop, increase CAT C vis to 2½ miles, CAT D vis to 2¾ miles, CAT E vis to 3 miles.		

ATIS 119.525	APP CON 124.875 307.125	TOWER 118.75 290.25	GND CON 123.65 229.8	CLNC DEL 121.9	ASR/PAR
------------------------	-----------------------------------	-------------------------------	--------------------------------	--------------------------	---------



CUPEN R-196 ART 14.3	JOGIN INT ART R-146 I-AEZ 18 RADAR	KIMBO INT ART R-106 I-AEZ 8.3 RADAR	1200	5000	ART
15,000	5000	3000	REMI I-AEZ 4.3 RADAR	I-AEZ 2.6	I-AEZ 1.6
GS 3.00° TCH 66	ART 14.3 Arc	3000	1560		
		4.2 NM	2.7 NM		
EMERG SAFE ALT 100 NM 7600					
Use I-AEZ DME when on the localizer course. LOC only.					
† ALTERNATE MISSED APPROACH: Or when directed by ATC climb to 1200 then climbing left turn to 3000 via hdg 340° within 10 NM. (RADAR required).					

ELEV 690	TDZE 685
Rwy 3 ldg 8637' HIRL Rwy 3-21, 15-33 MRL Rwy 8-26, RAIL Rwy 15	
FAF to MAP 6.9 NM	
Knots	120 140 160 180 200
Min:Sec	3:27 2:57 2:35 2:18 2:04

NE-2, 20 MAR 2025 to 17 APR 2025

NE-2, 20 MAR 2025 to 17 APR 2025

FORT DRUM, NEW YORK
Amdt 2 20APR23

44°03'N-75°43'W

WHEELER-SACK AAF (KGTB)

HI-ILS or LOC RWY 3