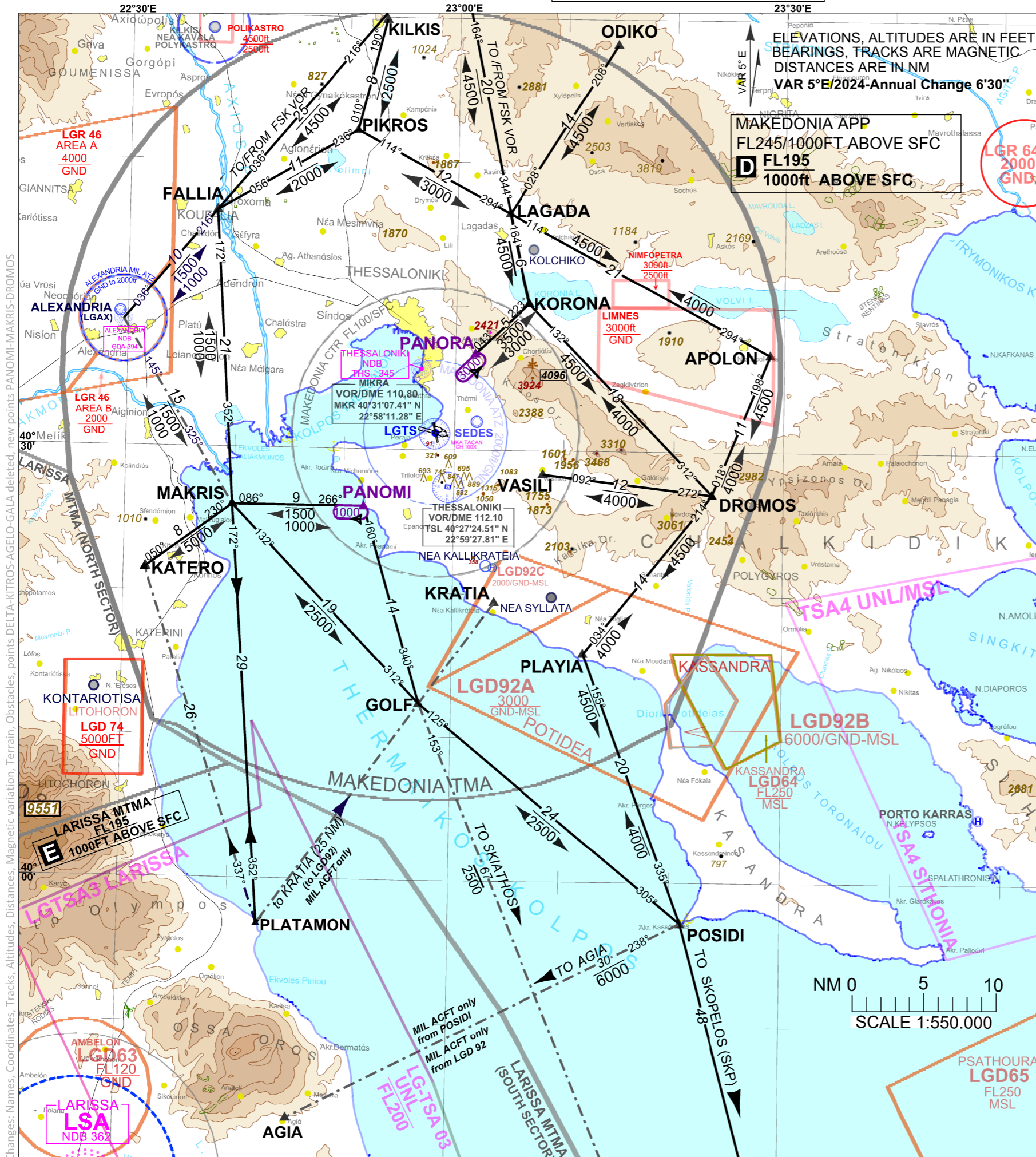


TRANSITION ALT. 6000 FT

AERODROME ELEV 22 ft

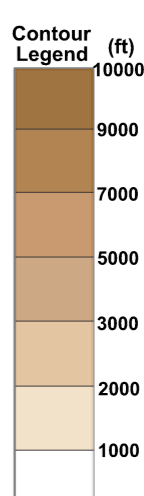
ATIS 127.555 MAKEDONIA TWR 118.105
THESSALONIKI APP 120.800



Pilots following the VFR routes of Makedonia TMA should comply with the following rules:

1. Aircraft (including helicopters) flying under VFR within Makedonia TMA, should follow the VFR routes and altitudes as depicted in this chart, unless VFR criteria require otherwise or a special authorization is granted from the appropriate ATC unit.
2. Access to Makedonia TMA is restricted to aircraft capable of maintaining two-way radio communication with the appropriate ATC unit.
3. Acft flying under VFR within Makedonia TMA shall be equipped with a functioning transponder with mode A and C capabilities.
4. Unless otherwise instructed by the appropriate ATS unit, VFR acft shall squawk A 7000.
5. When deemed necessary by the pilots to deviate from the specified routes and/or altitudes they should communicate with Makedonia Approach Control prior entering Makedonia TMA or immediately after departure to obtain clearance for deviation.
6. When air traffic conditions require, ATC may assign different VFR routes.
7. Position reports must be given to the appropriate ATC unit (Thessaloniki APP or Makedonia TWR) when over compulsory reporting points depicted on this chart.
8. In order to facilitate the traffic flow two visual holdings are established: PANORA, PANOMI.
9. Cancellation of IFR flight plan within Makedonia TMA is subject to ATC approval and after such a cancellation the VFR routes and altitudes should again be followed.
10. Route PLATAMON to KRATIA should be used only by Military aircraft flying to Danger Area LGD 92 (Potidea). These aircraft will leave this area making a right turn proceeding to point POSIDI (Cape Kassandra) at 3000ft then to AGIA point (position 394321N 0224540E within Larissa TMA) climbing not above 6000ft and contacting Larissa APP entering Larissa MTMA.
11. It is reminded that on VFR routes the responsibility to avoid collision with other acft, provide terrain clearance and avoid restricted airspace, rests with the pilot.

WAYPOINTS		
AGIA	39 43 21N	022 45 40E
DROMOS	40 27 00N	023 23 30E
KATERO	40 21 34N	022 31 57E
KORONA	40 40 12N	023 06 36E
MAKRIS	40 26 00N	022 39 50E
ODIKO	40 58 17N	023 14 31E
PANOMI	40 26 00N	022 51 50E
PANORA	40 36 54N	023 01 48E
PLATAMON	39 56 53N	022 42 41E
VASILI	40 28 24N	023 08 06E
VOR/DME		
FISKA	410555.37N	0225929.36E
AIRPORT		
THESSALONIKI (LGTS)	403111.0N	0225815.3E
SEDES (LGSD)-MIL	403200N	0230200E
ALEXANDRIA (LGAX)-MIL	403846.80N	0222934.20E
CAT-B AERODROMES		
KILKIS/NEA KAVALA POLYKASTRO (NOT IN WGS84)	405907N	0223723E
PIERIA/ KONTARIOTISA	401310.48N	0222734.15E
CHALKIDIKI/ NEA SYLLATA	401950.97N	0230902.57E



NOTE
CIVIL AND MIL ACFT ROUTES ———
MIL ACFT ROUTES ONLY - - - - -