

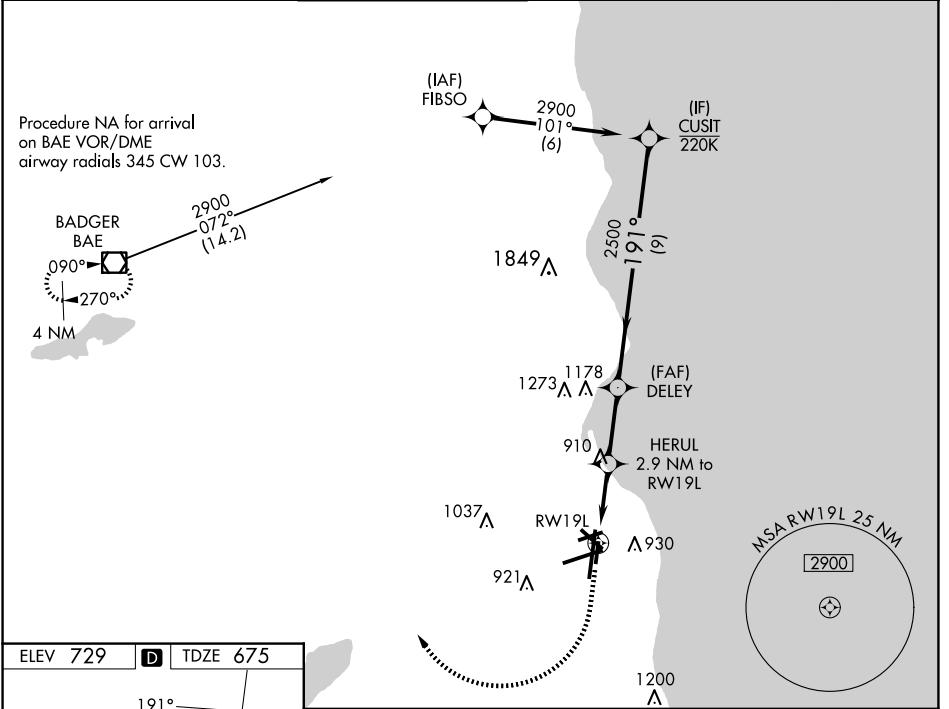
WAAS CH <b>42642</b> <b>W19B</b>	APP CRS <b>191°</b>	Rwy Idg TDZE Apt Elev	<b>4182</b> <b>675</b> <b>729</b>
--	------------------------	-----------------------------	---

# RNAV (GPS) RWY 19L

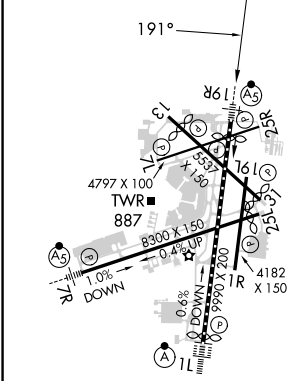
GENERAL MITCHELL INTL (MKE)

RNP APCH.	<p><b>▼</b> Rwy 19L helicopter visibility reduction below 3/4 SM NA. For uncompensated Baro-VNAV systems, LNAV/VNAV NA below -20°C or above 54°C.</p>	<p>MISSED APPROACH: Climb to 1600 then climbing right turn to 2900 direct BAE VOR/DME and hold.</p>
-----------	---	---

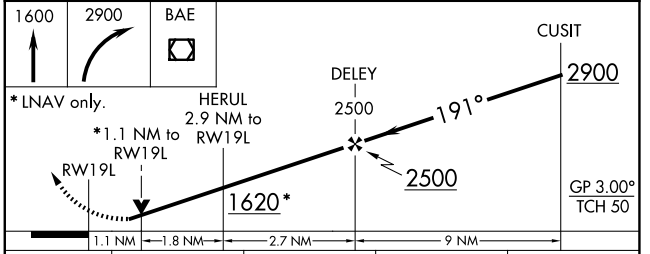
D-ATIS <b>126.4</b>	MILWAUKEE APP CON <b>126.5 307.0</b>	MILWAUKEE TOWER <b>124.575 269.05</b>	GND CON <b>121.8 263.125</b>	CLNC DEL <b>120.8</b>	CPDLC
------------------------	---	--	---------------------------------	--------------------------	-------



ELEV 729	<b>D</b>	TDZE 675
----------	----------	----------



TDZ/CL Rwy 1L  
 REIL Rws 1R, 7L, 13, 25L, 25R, and 31  
 HIRL Rws 1L-19R and 7R-25L  
 MIRL Rws 1R-19L, 13-31, and 7L-25R



CATEGORY	A	B	C	D
LPV DA	1032-1 357 (400-1)			
LNAV VNAV DA	1072-1 1/8 397 (400-1 1/8)			
LNAV MDA	1080-1 405 (400-1)	1080-1 1/8 405 (400-1 1/8)		
<b>C</b> CIRCLING	1240-1 511 (600-1)	1240-1 1/2 511 (600-1 1/2)	1360-2 631 (700-2)	

EC-3, 20 MAR 2025 to 17 APR 2025

EC-3, 20 MAR 2025 to 17 APR 2025