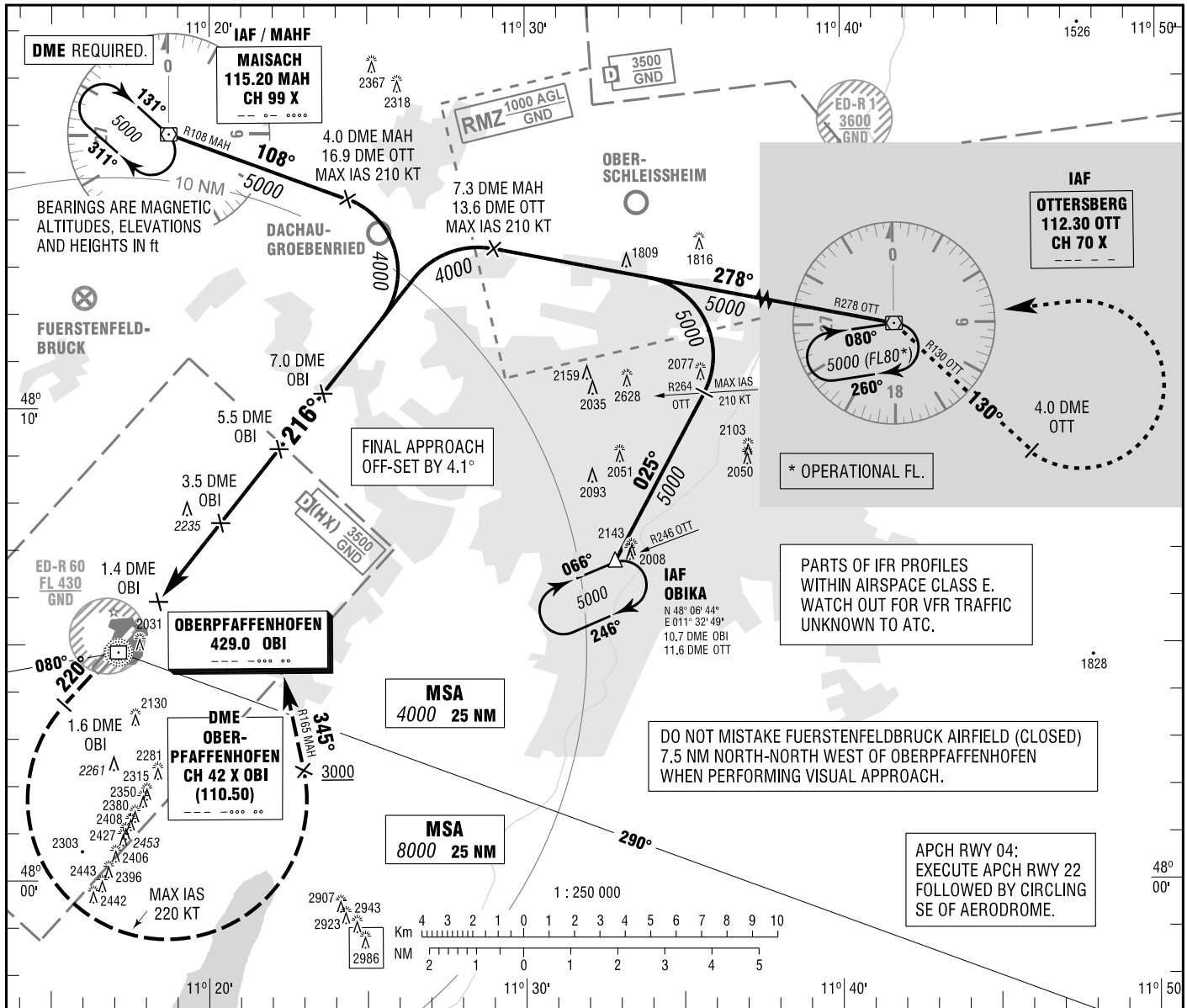


OBERPFAFFENHOFEN
NDB
RWY 22

OBERPFAFFENHOFEN ATIS 126.580
MUENCHEN RADAR 127.955 (S)
MUENCHEN ARRIVAL 120.780 (S)
OBERPFAFFENHOFEN TOWER 119.555

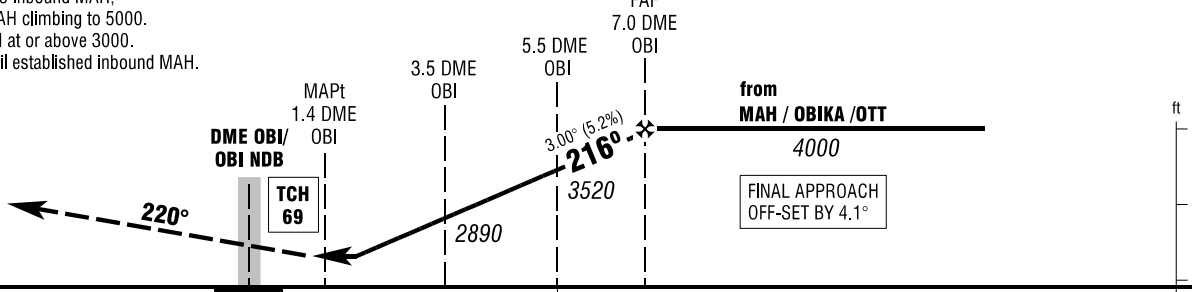
ELEV 1947
OCH RELATED TO THR 22 ELEV 1890

INSTRUMENT
APPROACH
CHART - ICAO



MISSED APPROACH PROCEDURE

On heading 220° to 1.6 DME OBI;
LT, to intercept R165 inbound MAH;
on R165 MAH to MAH climbing to 5000.
Intercept R165 MAH at or above 3000.
Max. IAS 220KT until established inbound MAH.



OCA (OCH)	A	B	C	D
NDB-DME	2490 (600)	2490 (600)	2490 (600)	2490 (600)
CIRCLING* OCH RELATED TO AD ELEV	2490 (550)	2560 (610)	2850 (900)	2850 (900)

	2	3	4	5	6
DME OBI	2	3	4	5	6
DIST THR	1.4	2.4	3.4	4.4	5.4
ALTITUDE	2410	2730	3050	3360	3680

Timing not authorized for defining the MAPt.

GS	kt	80	100	120	140	160	180
7.0 DME OBI - 1.4 DME OBI (5.6)	MIN:SEC	4:12	3:22	2:48	2:24	2:06	1:52
Rate of descent (5.2%)	ft / MIN	420	530	640	740	850	960

*SOUTH-EAST OF AERODROME ONLY. NOTE: MNM GROUND VISIBILITY REQUIRED 1500m.

Correction: Communications, obstacles & OCA(H) obstacles & highest obstacle revised.