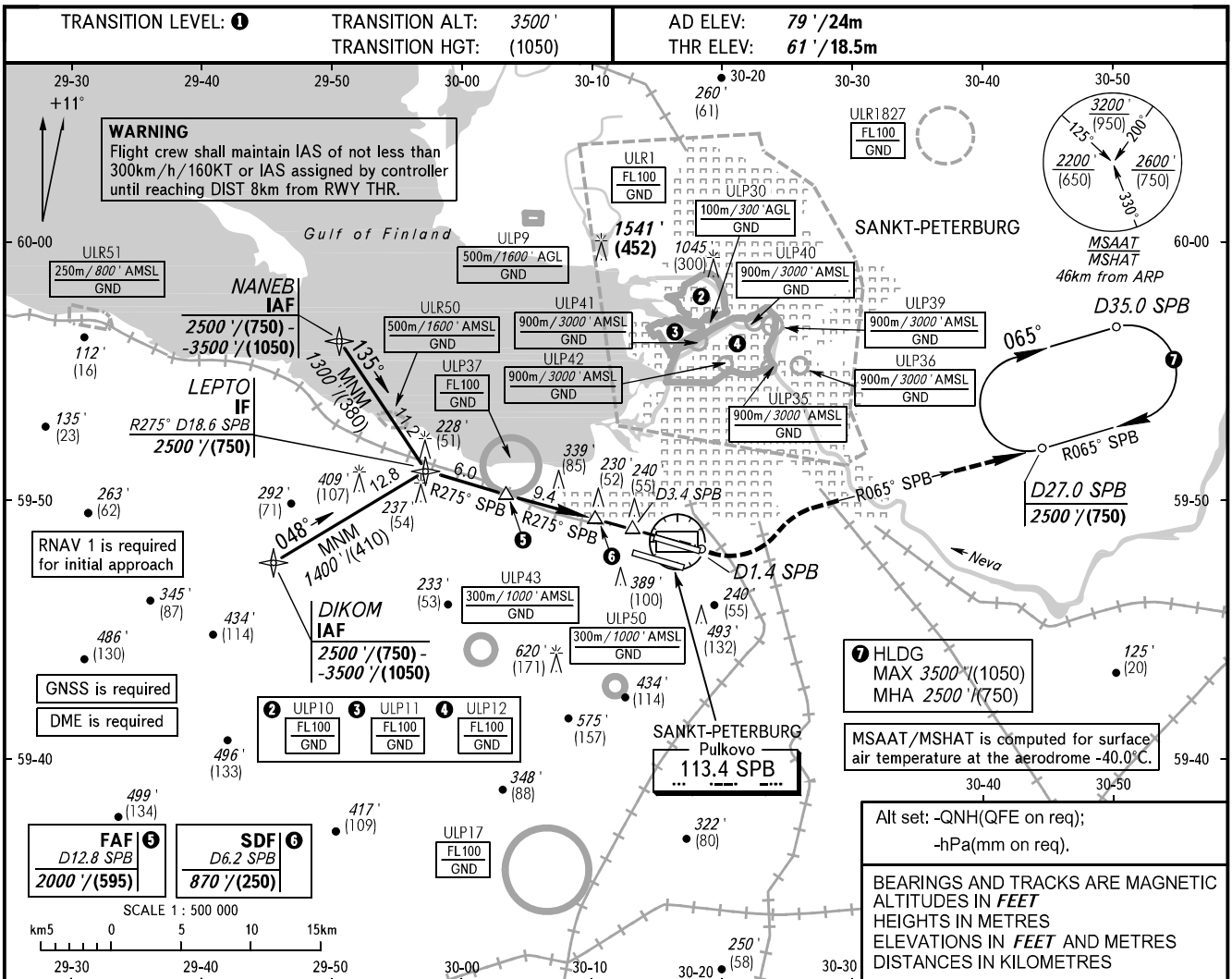


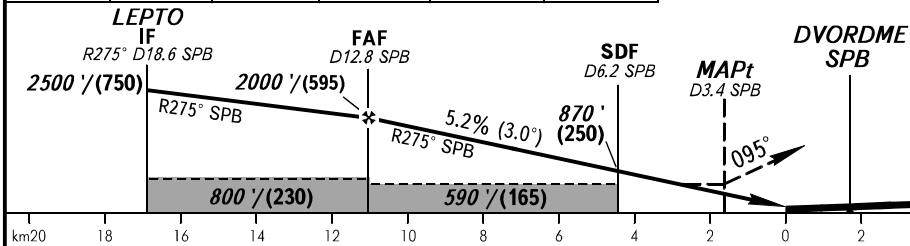
**INSTRUMENT
APPROACH
CHART - ICAO**

RADAR 120.300
TOWER 118.100

**SANKT-PETERBURG, RUSSIA
PULKOVO
DVOR RWY 10L**



DME SPB	12.8	12.0	10.0	8.0	6.0
ALT/HGT	2000'/(595)	1890'/(560)	1540'/(450)	1200'/(350)	860'/(245)



MISSED APPROACH
Climb straight ahead to DVORDME SPB, establish outbound on R095° SPB to D1.4 SPB, turn LEFT to intercept R065° SPB to D27.0 SPB climbing to 2500'/(750), then join holding area.

OCA(H)		A	B	C	D
Straight-in Approach	With SDF	480' (420') (130)	480' (420') (130)	480' (420') (130)	480' (420') (130)
	WO SDF	590' (530') (165)	590' (530') (165)	590' (530') (165)	590' (530') (165)
Circling		690' (610') (190)	790' (710') (220)	890' (810') (250)	1020' (940') (290)

1. TRANSITION LEVEL:
- FL050 when QNH is 996 hPa (747mm mercury column) or above;
- FL060 when QNH is 960 hPa (720mm mercury column) or above, but less than 996 hPa (747mm mercury column);
- FL070 when QNH is less than 960 hPa (720mm mercury column).

WARNING
Visual manoeuvring to the north of the AD is PROHIBITED.

NOTE:
1. The length of intermediate approach is less than 9.3km.
2. MAPt at D3.4 SPB. Timing not authorized for defining MAPt.

GROUND SPEED	km/h	150	180	210	240	270	300	330	360	390
	kt	80	100	110	130	145	160	180	195	210
RATE OF DESCENT	m/s	2.2	2.6	3.1	3.5	3.9	4.4	4.8	5.2	5.7
	ft/min	430	516	602	688	774	860	946	1032	1118

CHANGE: WARNING