

WAAS CH <b>58021</b> <b>W32A</b>	APP CRS <b>320°</b>	Rwy Idg TDZE Apt Elev	<b>5846</b> <b>862</b> <b>887</b>
--	------------------------	-----------------------------	---

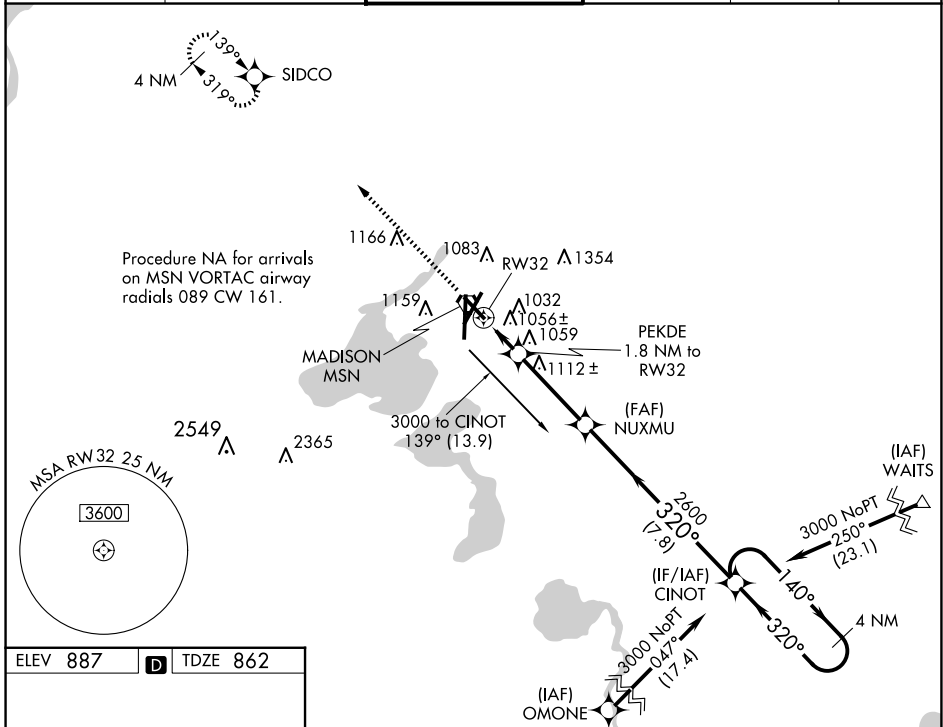
# RNAV (GPS) RWY 32

DANE COUNTY RGNL/TRUAX FLD (MSN)

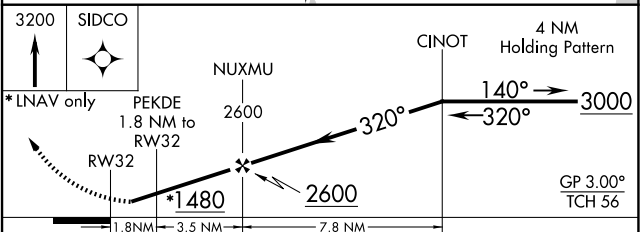
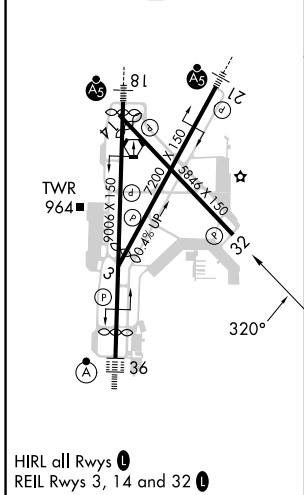
**⚠** For uncompensated Baro-VNAV systems, LNAV/VNAV NA below -19°C (-2°F) or above 54°C (130°F). DME/DME RNP-0.3 NA. Helicopter visibility reduction below ¾ SM NA.

**MISSED APPROACH:** Climb to 3200 direct SIDCO and hold.

ATIS <b>124.65 278.3</b>	MADISON APP CON * <b>135.45 343.7</b>	MADISON TOWER * <b>119.3 (CTAF) 0 257.8</b>	GND CON <b>121.9 348.6</b>	CINC DEL <b>121.625</b>	UNICOM <b>122.95</b>
-----------------------------	--	--	-------------------------------	----------------------------	-------------------------



ELEV 887	<b>D</b>	TDZE 862
----------	----------	----------



CATEGORY	A	B	C	D
LPV DA		1232-1¼	370 (400-1¼)	
LNAV/VNAV DA		1237-1¼	375 (400-1¼)	
LNAV MDA	1360-1	498 (500-1)	1360-1¾	498 (500-1¾)
<b>C</b> CIRCLING	1420-1 533 (600-1)	1460-1 573 (600-1)	1460-1½ 573 (600-1½)	1700-2¾ 813 (900-2¾)