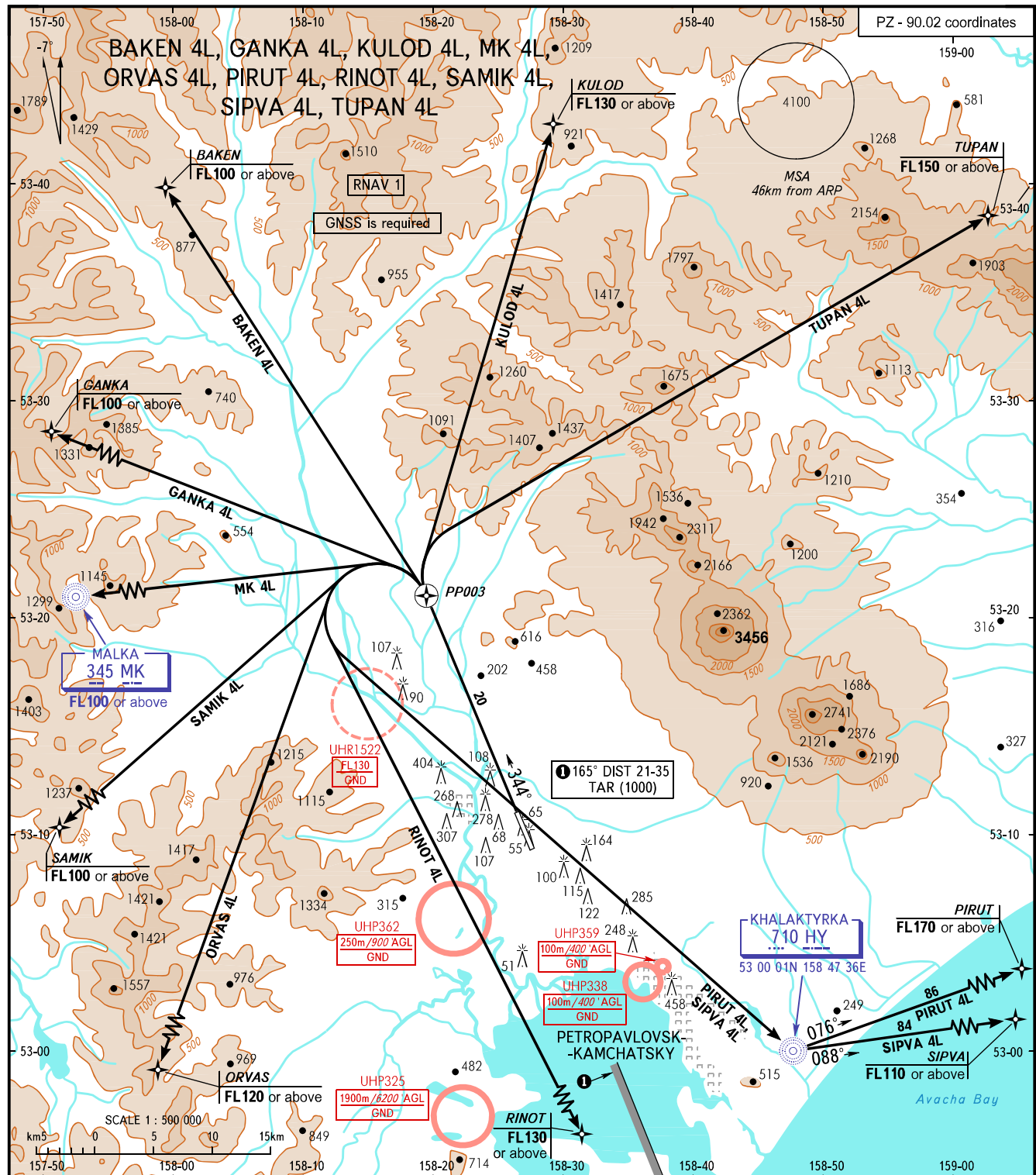


STANDARD DEPARTURE CHART
INSTRUMENT (SID) - ICAO

PETROPAVLOVSK-KAMCHATSKY, RUSSIA
YELIZOVO
RNAV RWY 34L

TRANSITION
HEIGHT: (2400)



START RADAR	118.100 119.400	WARNING: 1. MINIMUM CLIMB GRADIENTS (due to obstacles): BAKEN 4L: 5.1% up to (600); GANKA 4L: 5.1% up to FL090; KULOD 4L: 6.5% up to (1900); MK 4L: 4.2% up to (2000); ORVAS 4L: 5.1% up to (2150); PIRUT 4L, SIPVA 4L: 5.1% up to (1900); RINOT 4L: 5.1% up to (2000); SAMIK 4L: 4.3% up to (2000); TUPAN 4L: 6.2% up to FL100.
BEARINGS AND TRACKS ARE MAGNETIC ALTITUDES AND ELEVATIONS IN METRES DISTANCES IN KILOMETRES	Alt set: -QFE(QNH on req); -mm(hPa on req).	
		2. MINIMUM CLIMB GRADIENTS (due to airspace structure): BAKEN 4L: 5.1% from (600) up to FL100; GANKA 4L: 5.1% from FL090 up to FL100; KULOD 4L: 6.5% from (1900) up to FL130; MK 4L: 4.2% from (2000) up to FL100; TUPAN 4L: 5.1% from FL100 up to FL150.