

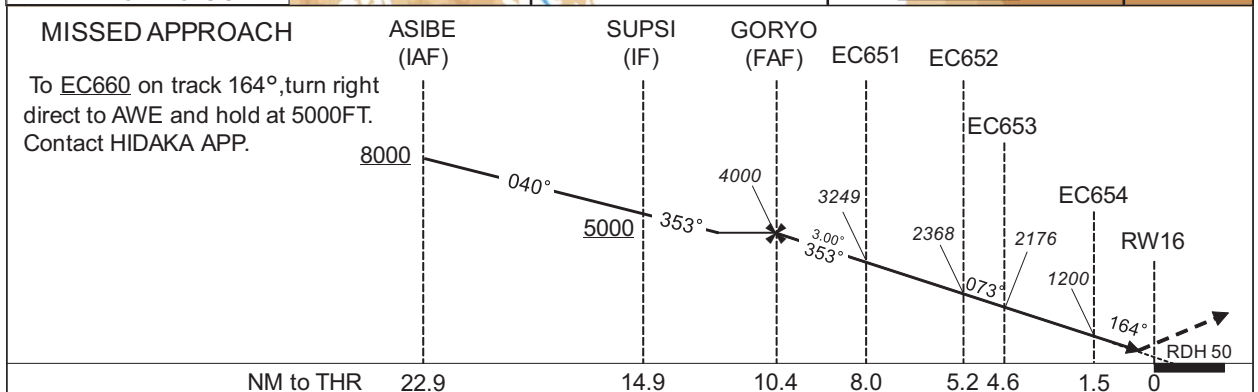
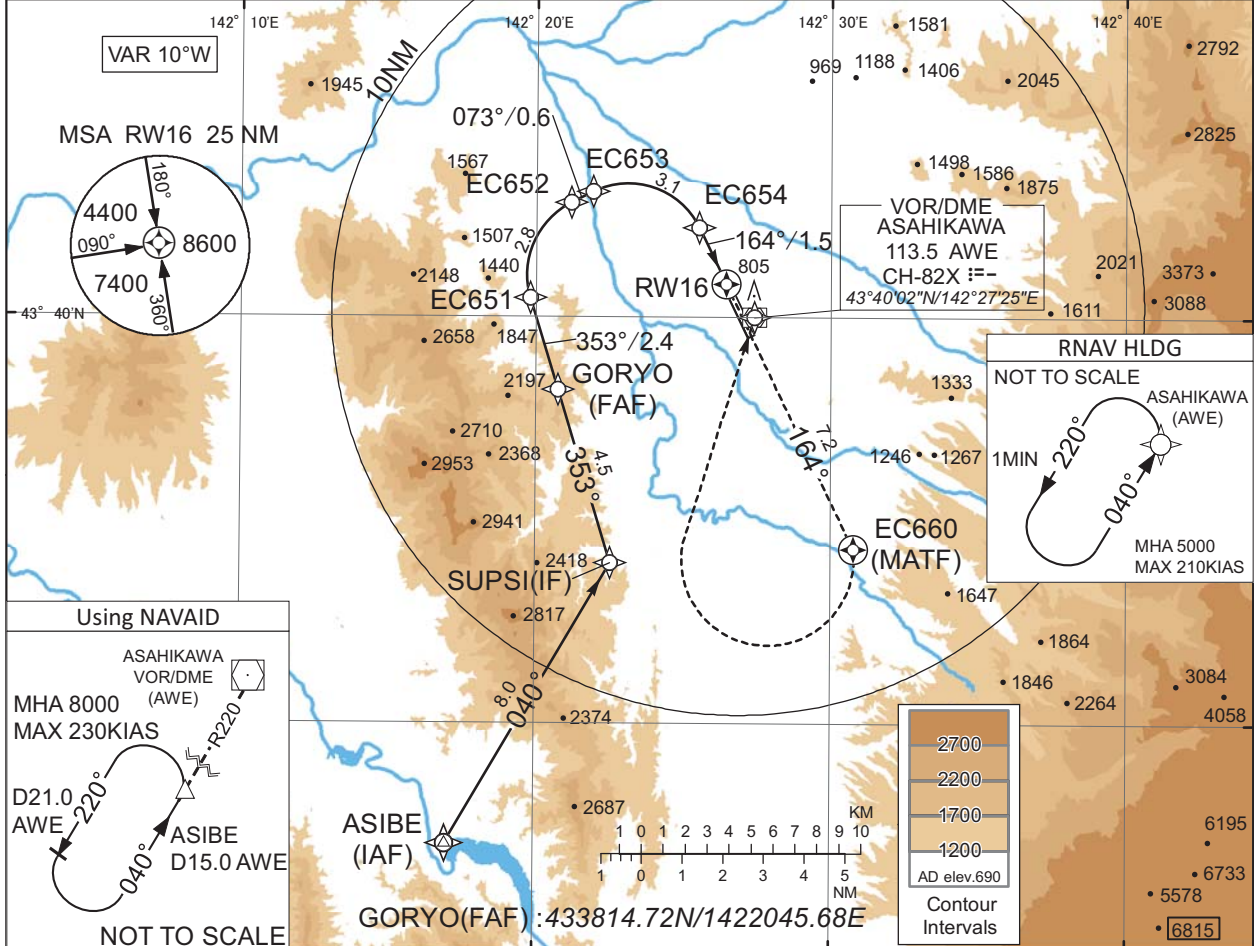
INSTRUMENT APPROACH CHART

RJEC / ASAHIKAWA

RNP Y RWY16(AR)

HIDAKA APP 128.325 - 246.1 - 134.55	RNP AR RF required.	DAISETSU TOWER 118.55 - 126.2	RADAR AVBL
--	------------------------	----------------------------------	------------

For uncompensated Baro-VNAV systems, procedure not authorized below -30°C / above 45°C



Missed APCH climb gradient MNM 3.0%

CAT	RNP 0.30	
	DA(H)	CMV
A	-	-
B	960(300)	1400
C	-	-
D	-	-

Authorization Required

MINIMA with Missed APCH climb gradient of 2.5% are not established.

CHANGE : SUPSI established. EC650 abolished.

INSTRUMENT APPROACH CHART

RJEC / ASAHIKAWA

RNP Y RWY16(AR)

Coding Table

Serial Number	Path Descriptor	Waypoint Identifier	Fly Over	Course °M(°T)	Magnetic Variation	Distance (NM)	Turn Direction	Altitude (FT)	Speed (KIAS)	VPA/RDH (°/FT)	RNP Value
001	IF	ASIBE	-	-	-9.9	-	-	+8000	-	-	-
002	TF	SUPSI	-	040 (030.1)	-9.9	8.0	-	+5000	-	-	1.0
003	TF	GORYO	-	353 (343.1)	-9.9	4.5	-	4000	-	-	1.0
004	TF	EC651	-	353 (343.0)	-9.9	2.4	-	3249	-	-3.00	0.30
005	RF Center: ECRF1 r=1.98NM	EC652	-	-	-9.9	2.8	R	2368	-	-3.00	0.30
006	TF	EC653	-	073 (063.0)	-9.9	0.6	-	2176	-	-3.00	0.30
007	RF Center: ECRF2 r=1.93NM	EC654	-	-	-9.9	3.1	R	1200	-	-3.00	0.30
008	TF	RW16	Y	164 (154.2)	-9.9	1.5	-	710	-	-3.00/50	0.30
009	CF	EC660	Y	164 (154.2)	-9.9	7.2	-	-	-	-	1.0
010	DF	AWE	-	-	-9.9	-	R	5000	-	-	1.0

Path	Waypoint Identifier	Inbound Course °M(°T)	Magnetic Variation	Outbound Time (MIN)	Turn Direction	Minimum Altitude (FT)	Maximum Altitude (FT)	Speed (KIAS)	RNP Value
Hold	AWE	040 (030.6)	-9.9	1.0 (-14000)	L	5000	FL140	-210 (-14000)	1.0

Waypoint Coordinates

Waypoint Identifier	Coordinates	RF Arc Center Identifier	Coordinates
ASIBE	432703.98N / 1421700.93E	ECRF1	434104.78N / 1422225.25E
SUPSI	433359.28N / 1422233.14E	ECRF2	434123.69N / 1422307.68E
GORYO	433814.72N / 1422045.68E		
EC651	434030.03N / 1421948.65E		
EC652	434250.78N / 1422111.17E		
EC653	434307.07N / 1422155.45E		
EC654	434214.29N / 1422531.40E		
RW16	434051.04N / 1422626.96E		
EC660	433419.98N / 1423047.35E		
AWE	434002.15N / 1422724.65E		

CHANGE : VAR. SUPSI established. EC650 abolished.