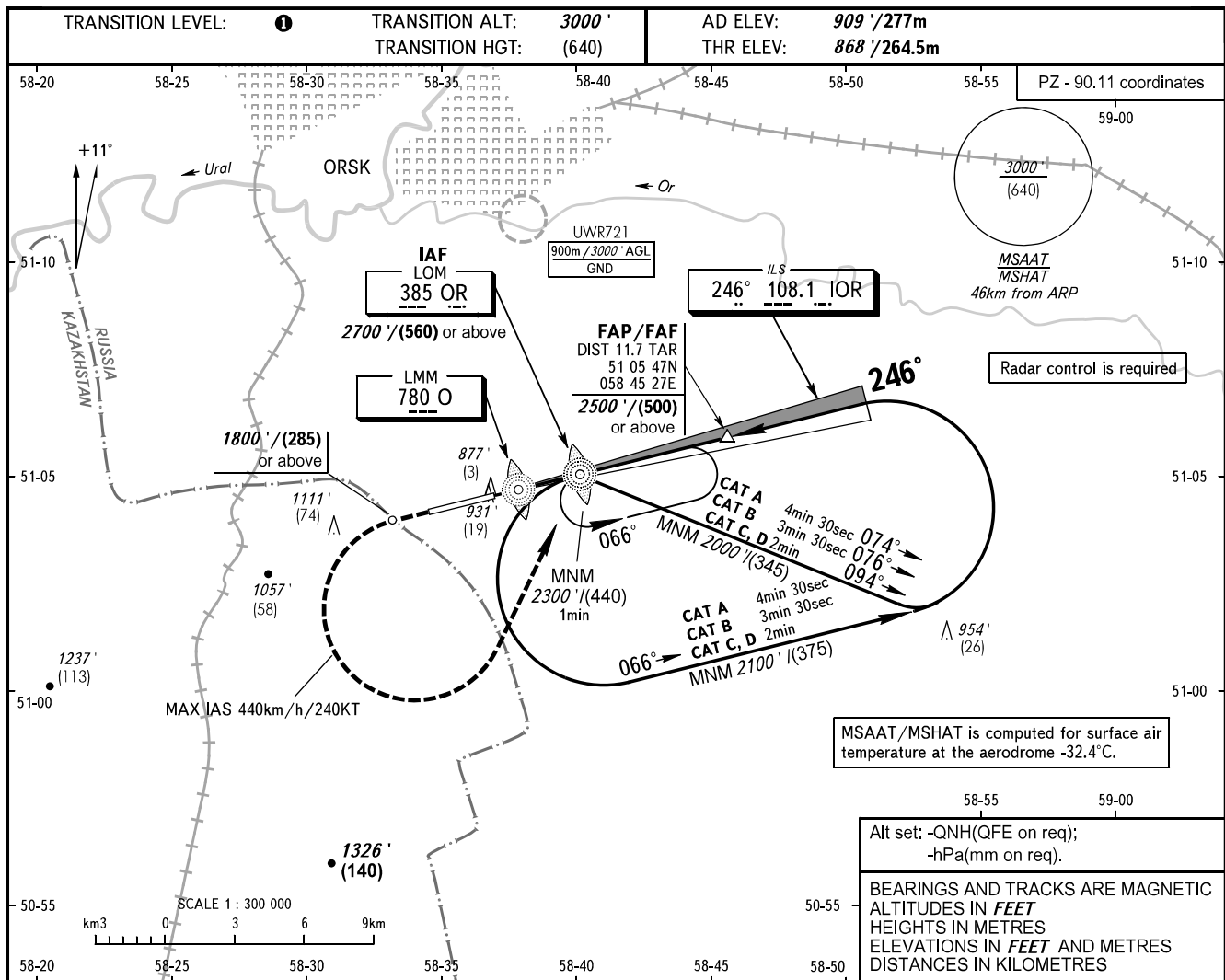


**INSTRUMENT
APPROACH
CHART - ICAO**

ORSK, RUSSIA
ORSK
ILS X, LOC X RWY 25

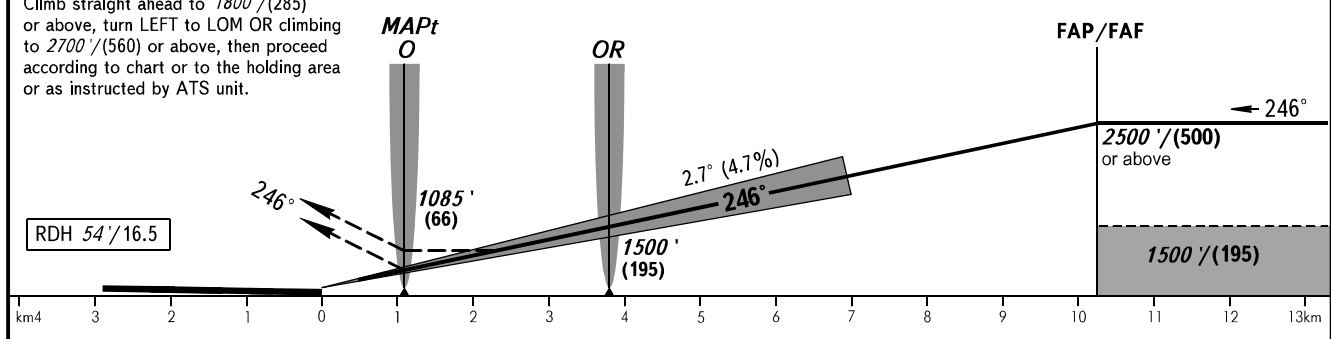
TOWER **122.700**



MISSED APPROACH

Climb straight ahead to 1800' / (285) or above, turn LEFT to LOM OR climbing to 2700' / (560) or above, then proceed according to chart or to the holding area or as instructed by ATS unit.

FAF is fixed by TAR (DIST 11.7)



OCA(H)		A	B	C	D
Straight-in	CAT I	1061' (193') (59)	1073' (205') (62)	1081' (213') (65)	1091' (223') (68)
	LOC	1130' (260') (80)	1130' (260') (80)	1130' (260') (80)	1130' (260') (80)
Circling		1310' (400') (125)	1410' (500') (155)	1630' (720') (220)	1660' (750') (230)

1 TRANSITION LEVEL:
- FL040 when QNH is 1013 hPa (760mm mercury column) or above;
- FL050 when QNH is 977 hPa (733mm mercury column) or above, but less than 1013 hPa (760mm mercury column);
- FL060 when QNH is less than 977 hPa (733mm mercury column).

NOTE:
1. MAPt at LMM O. Timing not authorized for defining MAPt.
2. Turn before passing MAPt is PROHIBITED.

GROUND SPEED	km/h	150	180	210	240	270	300	330	360	390	420	450
RATE OF DESCENT	m/s	2.0	2.4	2.7	3.1	3.5	3.9	4.3	4.7	5.1	5.5	5.9
	ft/min	385	463	540	617	694	771	848	925	1002	1079	1156