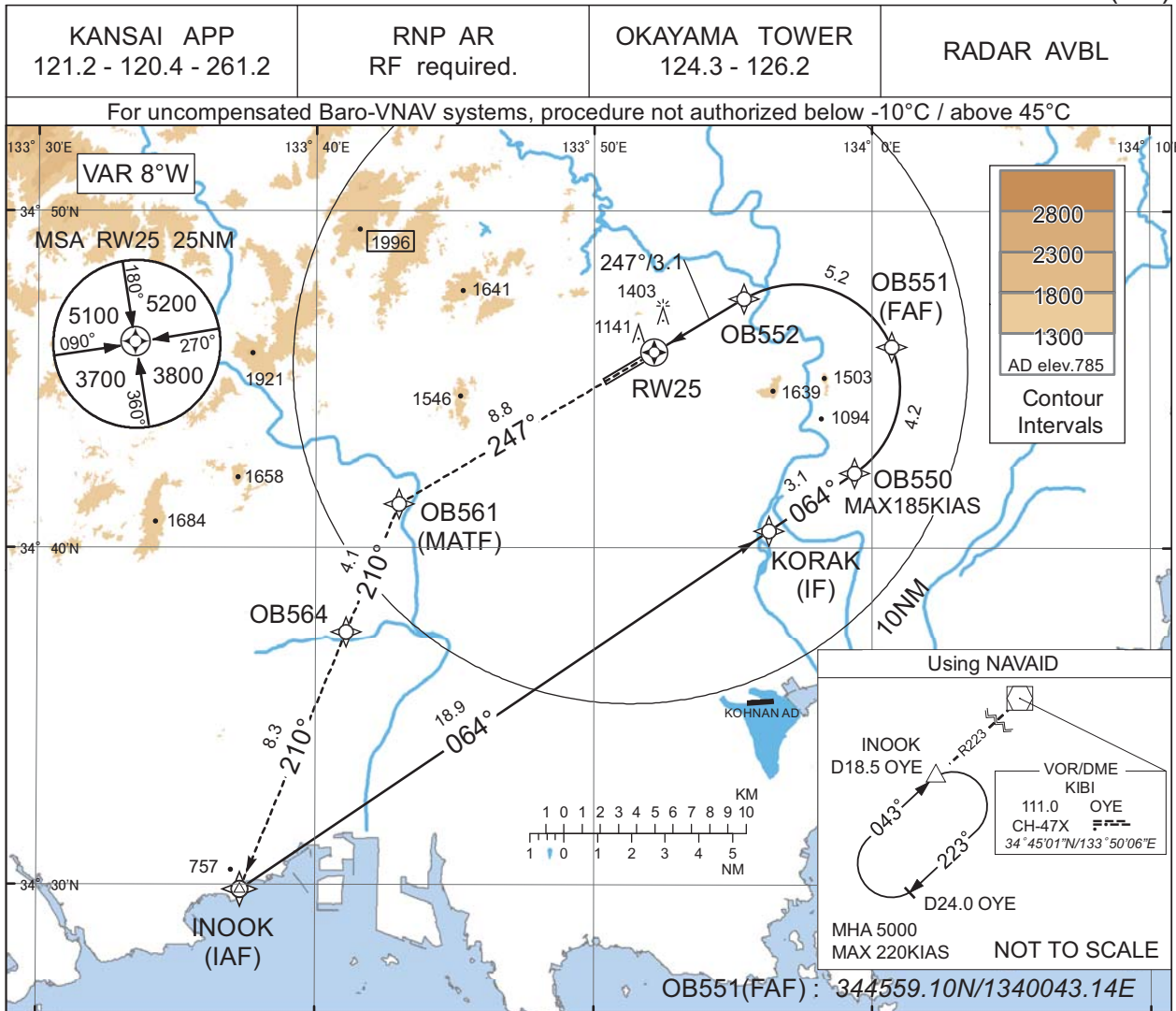


INSTRUMENT APPROACH CHART

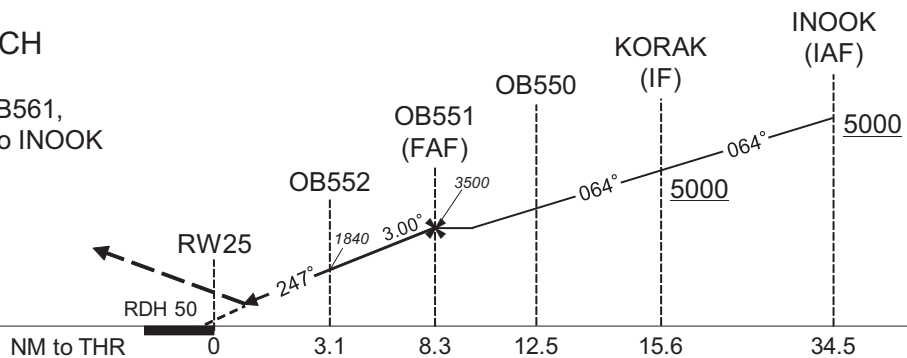
RJOB / OKAYAMA

RNP Y RWY25(AR)



MISSED APPROACH

Climb to 5000FT, to OB561, to OB564 at 5000FT, to INOOK and hold.
Contact KANSAI APP.



Missed APCH climb gradient MNM 5.0% for RNP 0.10

MINIMA	THR elev. 804		AD elev. 785	
	RNP 0.10		RNP 0.30	
CAT	DA(H)	CMV	DA(H)	CMV
A	-	-	-	-
B	-	-	-	-
C	1276(472)	1600	1564(760)	1800
D	-	1800	-	2000

MINIMA with Missed APCH climb gradient of 2.5% are not established for RNP 0.10.

Authorization Required

CHANGE : Description of VAR.

INSTRUMENT APPROACH CHART

RJOB / OKAYAMA

RNP Y RWY25(AR)

Coding Table

Serial Number	Path Descriptor	Waypoint Identifier	Fly Over	Course °M(°T)	Magnetic Variation	Distance (NM)	Turn Direction	Altitude (FT)	Speed (KIAS)	VPA/RDH (°/FT)	RNP Value
001	IF	INOOK	-	-	-8.1	-	-	+5000	-	-	-
002	TF	KORAK	-	064 (055.7)	-8.1	18.9	-	+5000	-	-	1.0
003	TF	OB550	-	064 (055.8)	-8.1	3.1	-	-	-185	-	1.0
004	RF Center: OBRF3 r=3.06NM	OB551	-	-	-8.1	4.2	L	3500	-	-	1.0
005	RF Center: OBRF3 r=3.06NM	OB552	-	-	-8.1	5.2	L	1840	-	-3.00	0.10 0.30
006	TF	RW25	Y	247 (239.2)	-8.1	3.1	-	854	-	-3.00/50	0.10 0.30
007	TF	OB561	-	247 (239.1)	-8.1	8.8	-	-	-	-	1.0
008	TF	OB564	-	210 (202.3)	-8.1	4.1	-	5000	-	-	1.0
009	TF	INOOK	-	210 (202.3)	-8.1	8.3	-	5000	-	-	1.0

Waypoint Coordinates

Waypoint Identifier	Coordinates	RF Arc Center Identifier	Coordinates
INOOK	342952.48N / 1333718.65E	OBRF3	344446.88N / 1335718.07E
KORAK	344031.39N / 1335618.17E		
OB550	344214.38N / 1335922.79E		
OB551	344559.10N / 1340043.14E		
OB552	344725.06N / 1335524.13E		
RW25	344549.88N / 1335210.24E		
OB561	344119.10N / 1334300.25E		
OB564	343730.82N / 1334106.50E		

CHANGE : PROC renamed.