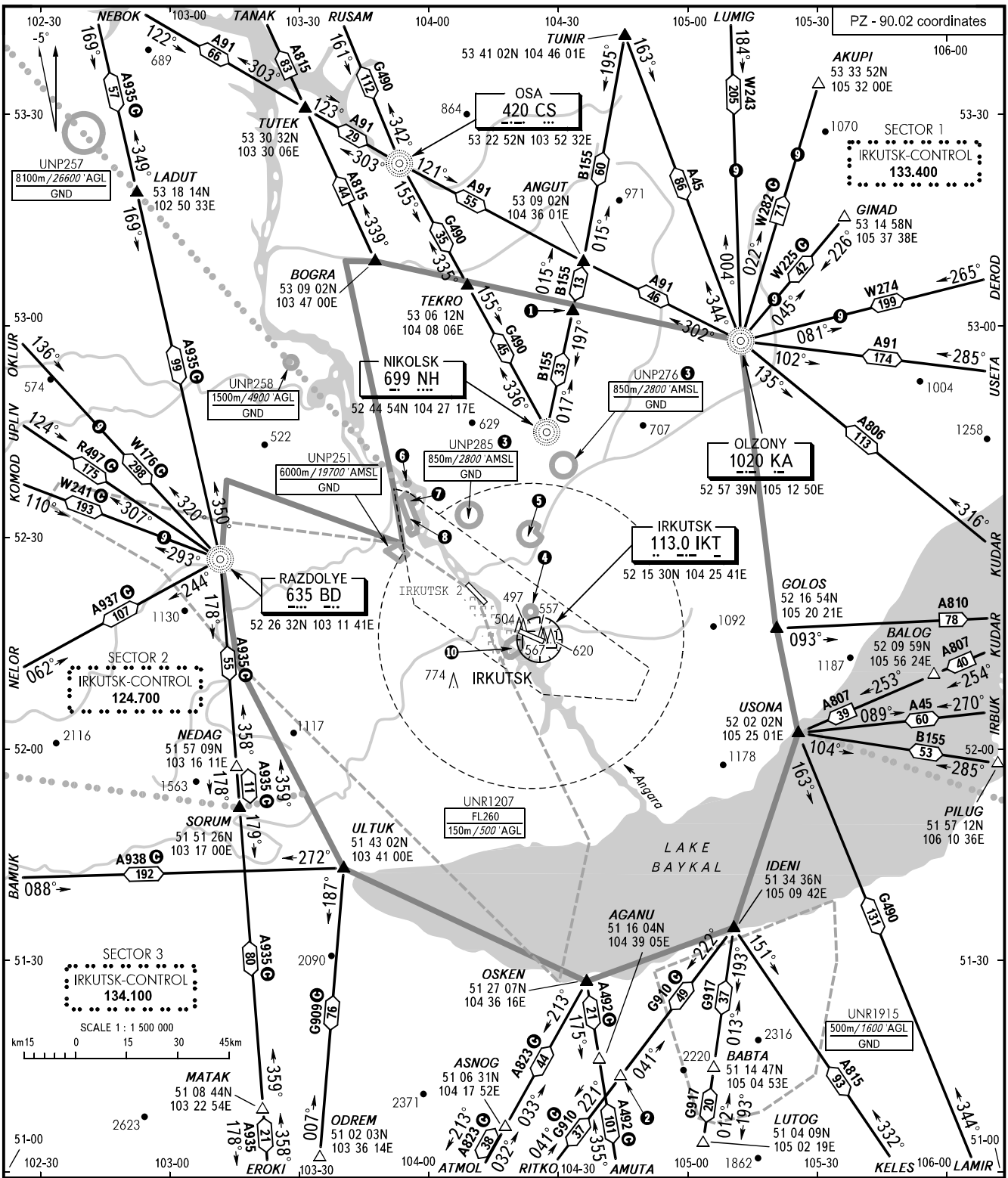


AREA CHART - ICAO

ARRIVAL, DEPARTURE  
AND TRANSIT ROUTES

IRKUTSK, RUSSIA

IRKUTSK



APPROACH RADAR 125.200  
RADAR 119.300

- |                                     |                                    |
|-------------------------------------|------------------------------------|
| ④ UNP261<br>1500m/4900' AGL<br>GND  | ⑤ UNP273<br>850m/2800' AMSL<br>GND |
| ⑥ UNP286<br>1500m/5000' AMSL<br>GND | ⑦ UNP274<br>300m/1000' AMSL<br>GND |
| ⑧ UNP287<br>1500m/5000' AGL<br>GND  | ⑨ UNP285<br>850m/2800' AMSL<br>GND |
| ⑩ UNP801<br>300m/1000' AGL<br>GND   |                                    |

- ① BILEN  
53 02 08N 104 33 51E
- ② BAPIR  
51 13 38N 104 43 51E
- ③ ACFT flights to/from IRKUTSK AD are permitted to proceed through Prohibited area.
- ④ Only for Russian users of airspace.

BEARINGS AND TRACKS ARE MAGNETIC  
ALTITUDES, HEIGHTS AND ELEVATIONS IN METRES  
DISTANCES IN KILOMETRES

CHANGE: Heading, VAR, UNP801