

STANDARD ARRIVAL CHART - INSTRUMENT

RJBB / KANSAI INTL

RNAV STAR RWY06L/06R

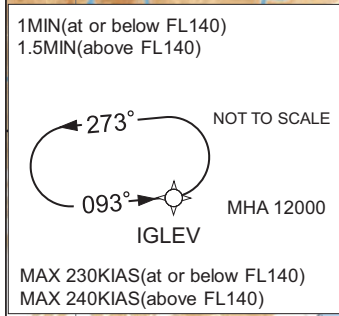
IGLEV B ARRIVAL
ATMUG B ARRIVAL

RNP1

Note GNSS required.



CHANGE : New PROC.



STANDARD ARRIVAL CHART - INSTRUMENT

RJBB / KANSAI INTL

RNAV STAR RWY06L/06R

IGLEV B ARRIVAL

From IGLEV, to BIXIS at 12000FT, to BB653, to BB654, to BB655, to IGDIN at 12000FT, to NALTO at or above 7000FT, to BERRY at or above 4000FT.

Serial Number	Path Descriptor	Waypoint Identifier	Fly Over	Course °M(°T)	Magnetic Variation	Distance (NM)	Turn Direction	Altitude (FT)	Speed (KIAS)	Vertical Angle	Navigation Specification
001	IF	IGLEV	-	-	-8.1	-	-	-	-	-	RNP1
002	TF	BIXIS	-	093 (085.3)	-8.1	11.2	-	12000	230	-	RNP1
003	TF	BB653	-	097 (088.7)	-8.1	8.9	-	-	-	-	RNP1
004	TF	BB654	-	163 (155.4)	-8.1	6.5	-	-	-	-	RNP1
005	TF	BB655	-	141 (132.9)	-8.1	6.4	-	-	-	-	RNP1
006	TF	IGDIN	-	119 (110.4)	-8.1	6.4	-	12000	230	-	RNP1
007	TF	NALTO	-	017 (009.1)	-8.1	16.5	-	+7000	-	-	RNP1
008	TF	BERRY	-	069 (061.2)	-8.1	12.6	-	+4000	-	-	RNP1

Path	Waypoint Identifier	Inbound Course °M(°T)	Magnetic Variation	Outbound Time (MIN)	Turn Direction	Minimum Altitude (FT)	Maximum Altitude (FT)	Speed (KIAS)	Navigation Specification
Hold	IGLEV	093 (085.2)	-8.1	1.0 (-14000) 1.5 (+14001)	L	12000	-	-230 (-14000) -240 (+14001)	RNP1

CHANGE : New PROC.

STANDARD ARRIVAL CHART - INSTRUMENT

RJBB / KANSAI INTL

RNAV STAR RWY06L/06R

ATMUG B ARRIVAL

From ATMUG, to BIXUR at 11000FT, to BB656, to BB657, to BB658, to BB659, to ISNES at 11000FT, to NALTO at or above 7000FT, to BERRY at or above 4000FT.

Serial Number	Path Descriptor	Waypoint Identifier	Fly Over	Course °M(°T)	Magnetic Variation	Distance (NM)	Turn Direction	Altitude (FT)	Speed (KIAS)	Vertical Angle	Navigation Specification
001	IF	ATMUG	-	-	-8.1	-	-	-	-	-	RNP1
002	TF	BIXUR	-	158 (149.4)	-8.1	15.6	-	11000	230	-	RNP1
003	TF	BB656	-	163 (155.3)	-8.1	9.1	-	-	-	-	RNP1
004	TF	BB657	-	186 (177.7)	-8.1	7.0	-	-	-	-	RNP1
005	TF	BB658	-	163 (155.3)	-8.1	7.0	-	-	-	-	RNP1
006	TF	BB659	-	141 (132.9)	-8.1	7.0	-	-	-	-	RNP1
007	TF	ISNES	-	119 (110.4)	-8.1	7.0	-	11000	230	-	RNP1
008	TF	NALTO	-	017 (009.1)	-8.1	18.0	-	+7000	-	-	RNP1
009	TF	BERRY	-	069 (061.2)	-8.1	12.6	-	+4000	-	-	RNP1

Path	Waypoint Identifier	Inbound Course °M(°T)	Magnetic Variation	Outbound Time (MIN)	Turn Direction	Minimum Altitude (FT)	Maximum Altitude (FT)	Speed (KIAS)	Navigation Specification
Hold	BIXUR	158 (149.5)	-8.1	1.0 (-14000) 1.5 (+14001)	R	11000	-	-230 (-14000) -240 (+14001)	RNP1

Waypoint Coordinates

Waypoint Identifier	Coordinates	Waypoint Identifier	Coordinates
IGLEV	340405.2N / 1335940.5E	BB656	341151.4N / 1342147.5E
BIXIS	340459.0N / 1341305.7E	BB657	340449.4N / 1342207.5E
BB653	340510.5N / 1342352.9E	BB658	335825.9N / 1342539.9E
BB654	335918.9N / 1342707.5E	BB659	335339.0N / 1343151.6E
BB655	335455.8N / 1343248.3E	ISNES	335112.0N / 1343946.3E
IGDIN	335241.1N / 1344003.5E	NALTO	340900.6N / 1344313.3E
ATMUG	343330.0N / 1340737.4E	BERRY	341502.0N / 1345631.6E
BIXUR	342006.7N / 1341711.9E		

CHANGE : New PROC.