

LOC I-JNK 109.1	APP CRS 319°	Rwy Idg 6500
		TDZE 937
		Apt Elev 937

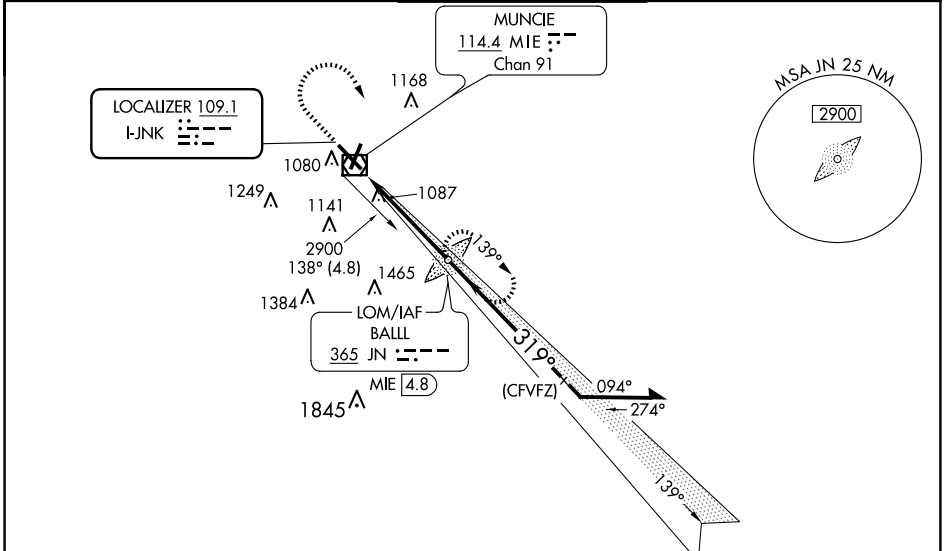
ILS or LOC RWY 32

DELAWARE COUNTY RGNL (MIE)

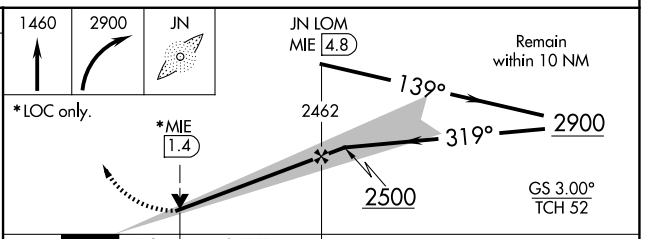
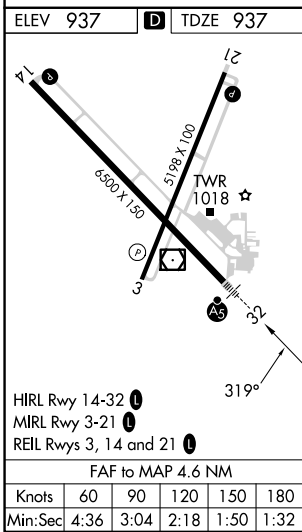
⚠ When control tower closed, except for operations with approved weather reporting use Fort Wayne altimeter setting. For inop MALS/RS when using Fort Wayne altimeter setting minimums, increase S-ILS 32 visibility to 1 SM. When local altimeter setting not received, use Fort Wayne altimeter setting: increase DA to 1257 feet and visibility all Cats 1/2 SM; increase all MDAs 120 feet and visibility Cat C 5/8 SM, Cat D 1 1/8 SM. VDP NA when using Fort Wayne altimeter setting.

MALS/RS
 :
MISSED APPROACH: Climb to 1460 then climbing right turn to 2900 direct BALL LOM and hold.

ATIS 133.25	INDIANAPOLIS APP CON 120.65 317.8	MUNCIE TOWER ★ 120.1 (CTAF) 0	GND CON 121.9	UNICOM 122.95
-----------------------	---	---	-------------------------	-------------------------



ADF or DME REQUIRED



CATEGORY	A	B	C	D
S-ILS 32	1137-1/2 200 (200-1/2)			
S-LOC 32	1380-1/2	443 (500-1/2)	1380-7/8	443 (500-7/8)
C CIRCLING	1460-1	523 (600-1)	1500-1 1/2 563 (600-1 1/2)	1600-2 663 (700-2)
FORT WAYNE ALTIMETER SETTING MINIMUMS				
S-ILS 32	1257-5/8 320 (400-5/8)			
S-LOC 32	1520-1/2	583 (600-1/2)	1520-1 1/2 583 (600-1 1/2)	1520-2 1/2 583 (600-2 1/2)
C CIRCLING	1580-1	643 (700-1)	1600-1 3/4 663 (700-1 3/4)	1720-2 1/2 783 (800-2 1/2)

EC-2, 20 MAR 2025 to 17 APR 2025

EC-2, 20 MAR 2025 to 17 APR 2025