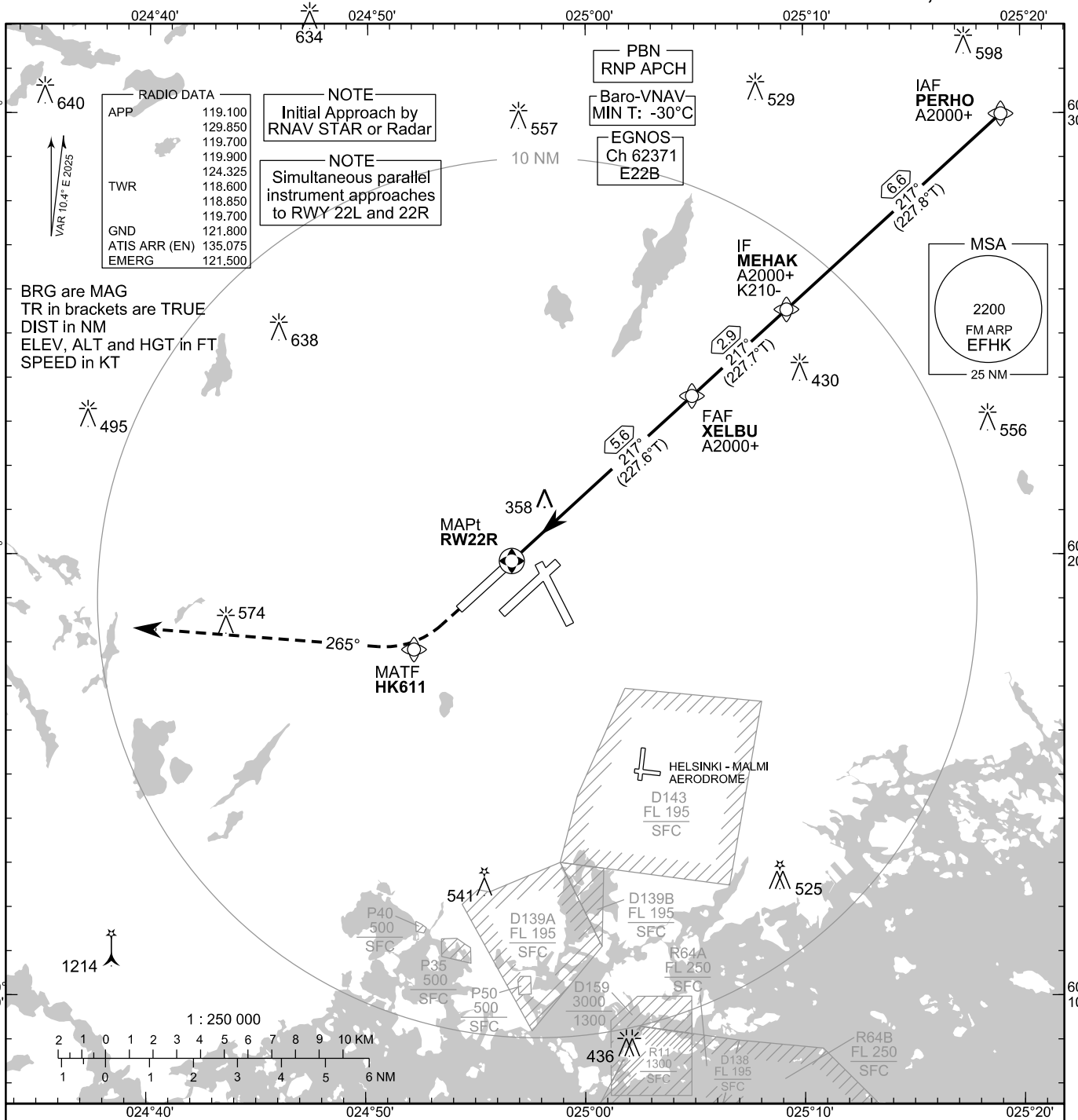


**INSTRUMENT
APPROACH CHART - ICAO**

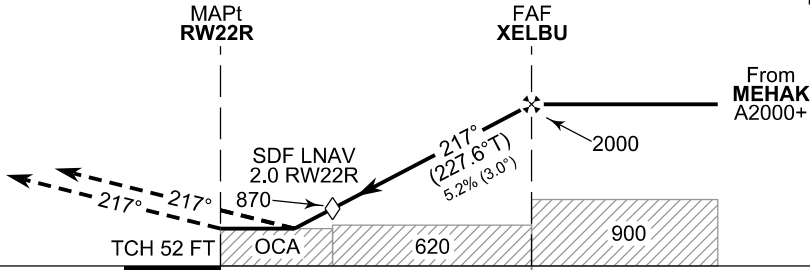
ELEV 180 FT
HEIGHTS RELATED TO
DTHR RWY 22R ELEV 179 FT

RNP RWY 22R
HELSINKI-VANTAA AERODROME
HELSINKI, FINLAND

CHG: MAG VAR; OCA(H); COR REF ELEV; Baro-VNAV MIN T. ADDN SBAS CAT I, MOCA



MISSED APPROACH
Proceed FM RW22R towards HK611 for right turn to track 265° climbing to 2000. Expect radar vectoring.



	10				5				0				5				10															
	NM				NM				NM				NM				NM															
	OCA (H)				A				B				C				D															
	LPV				333 (154)				343 (164)				355 (176)				368 (189)															
	LNAV/VNAV				456 (277)				468 (289)				476 (297)				486 (307)															
	LNAV				610 (430)																											
	DIST FM THR				2.0 NM				3.0 NM				4.0 NM				5.0 NM															
	Altitude (Height)				870 (690)				1190 (1010)				1500 (1330)				1820 (1640)															
					kt				90				100				120				140				160							
	FAF - MAPt 5.6 NM				min:sec				3:42				3:20				2:47				2:23				2:05							
					Rate of descent				ft/min				480				530				640				740				850			

Timing not authorized for defining the MAPt

EFHK RNP RWY 22R										
PROC ID NAV SPEC	SEQ NR	P/T	WPT			MAG	GEO TR	DIST NM	Constraints	
			ID	Type	Flyover				LVL	Speed
H22R PERHO RNP APCH	005	IF	PERHO	IAF	-	217°	227.8°T	6.6	A2000+	
	010	TF	MEHAK	IF	-				A2000+	K210-
	020	TF	XELBU	FAF	-	217°	227.7°T	2.9	A2000+	
	030	TF	RW22R	MAPt	Y	217°	227.6°T	5.6		
	040	TF	HK611	MATF	-	217°	227.5°T	3.0		
	050	CA	-	-	-	265°	275.4°T	-	A2000	

WPT COORD
SEE PAGE EFHK AD 2.15 - 1

FINAL APPROACH PARAMETERS			
LNAV Gradient	Baro-VNAV		TCH
	VPA	MNM T	
5.24 % (3.00°)	3.00°	-30°C	52 FT

SBAS DATA	
Approach ID	E22B
Service Provider	EGNOS
CRC remainder	25 3C 18 76
Channel number	62371
Data Block	SEE EFHK AD 2.15 - 5