

INSTRUMENT APPROACH  
CHART-ICAO

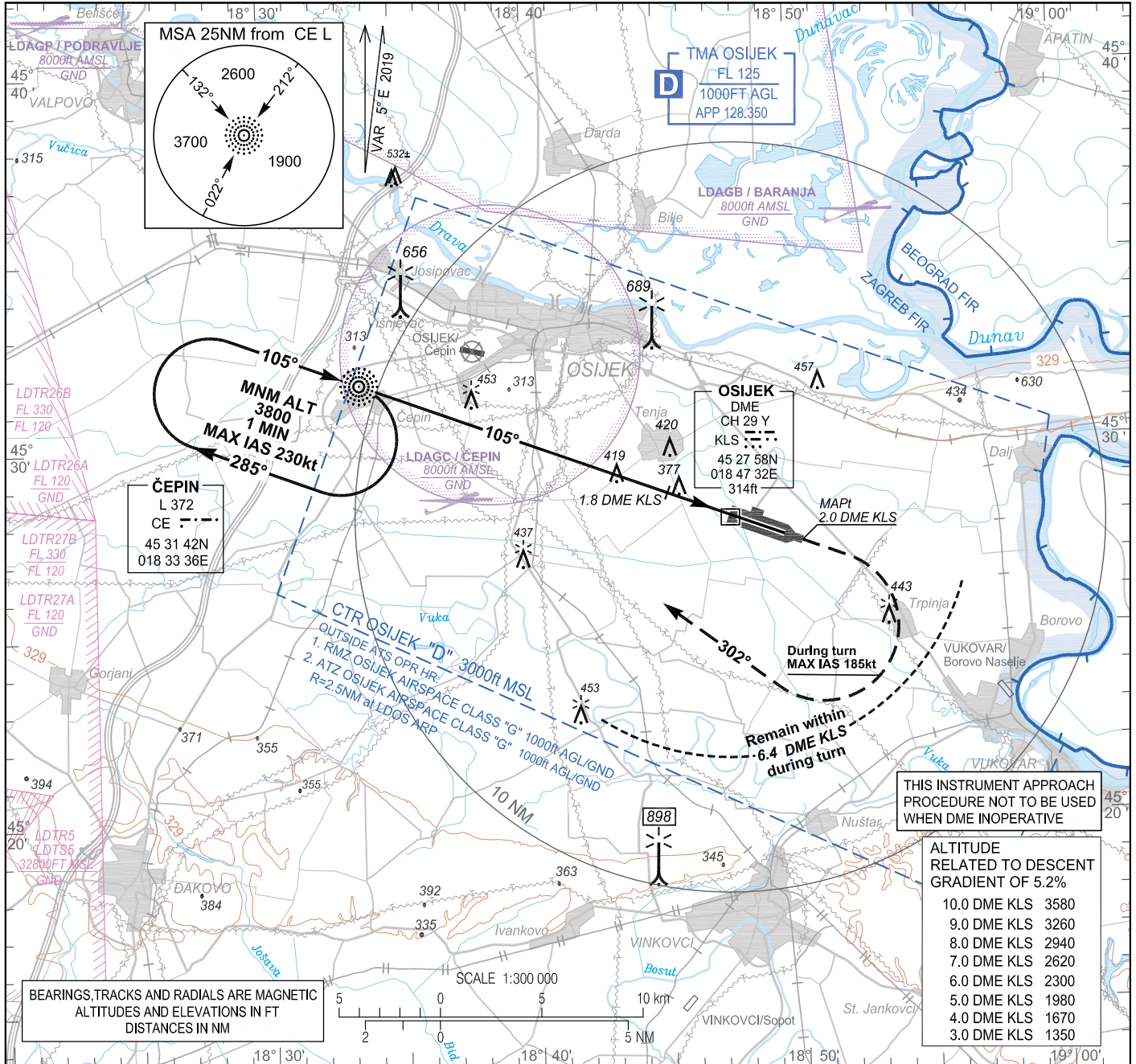
AD ELEV 291  
HEIGHTS RELATED  
TO AD ELEV

OSIJEK APPROACH 128.350  
OSIJEK APPROACH ALTN 125.850  
OSIJEK TOWER 128.350

OSIJEK / Klisa (LDOS)

L RWY 11

CHANGE: Call signs and frequencies updated; TMA Osijek vertical limit updated; LDTR3, LDTR4 and LDTS4 areas changed to LDTR26A, LDTR26B, LDTR27A and LDTR27B; RMZ Osijek added; ATZ Osijek added; Glider activity zones updated; LDOC closed; Editorial.

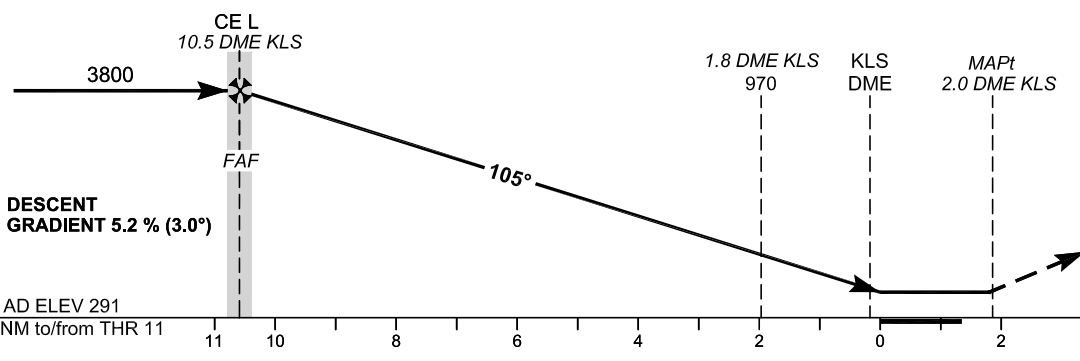


THIS INSTRUMENT APPROACH PROCEDURE NOT TO BE USED WHEN DME INOPERATIVE

ALTITUDE RELATED TO DESCENT GRADIENT OF 5.2%

10.0 DME KLS	3580
9.0 DME KLS	3260
8.0 DME KLS	2940
7.0 DME KLS	2620
6.0 DME KLS	2300
5.0 DME KLS	1980
4.0 DME KLS	1670
3.0 DME KLS	1350

BEARINGS, TRACKS AND RADIALS ARE MAGNETIC  
ALTITUDES AND ELEVATIONS IN FT  
DISTANCES IN NM



TRANSITION ALT 10 000

**MISSED APPROACH:**  
Turn RIGHT inbound CE L on QDM 302° CE climbing to 3800 and hold. Remain within 6.4 DME KLS during turn. Missed approach turn limited to 185kt maximum. Caution: Missed approach MAX IAS 185kt and 6.4 DME KLS limitation during turn due to airspace Class G restriction only.

OCA(H)	A	B	C	D
Straight-in Approach	630 (340)			
Circling	690 (400)	790 (500)	890 (600)	1090 (800)

FAF to MAPt - 12.5 NM								
GS(kt)	70	80	90	100	120	140	160	180
min : sec	10:42	9:22	8:20	7:30	6:15	5:21	4:41	4:10
Rate of descent (ft / min)	372	425	478	531	637	743	849	955

Timing not authorized for defining the MAPt

## OSIJEK / Klisa (LDOS)

L RWY 11

## AERONAUTICAL DATABASE REQUIREMENTS

## Conventional procedure essential fixes/points

## L RWY 11

Final approach descent angle: <sup>(1)</sup>3.00°

Fix identification	Coordinates	True bearing or ARC distance providing track	True bearing or distance providing intersection
IAF (CE L)	453142.33N 0183336.18E	-	-
FAF (CE L)	453142.33N 0183336.18E	-	-
SDF	452839.9N 0184510.6E	110.41° (CE L)	1.80 DME KLS
MAPt	452719.4N 0185015.4E	110.41° (CE L)	2.02 DME KLS

<sup>(1)</sup> Descent point inside CE L cone (from CE L coordinate descent angle should read 3.06°)

CHANGE: Call signs and frequencies updated; TMA Osijek vertical limit updated; LDTR3, LDTR4, LDTR5, LDTR6, LDTR7A, LDTR7B, LDTR26A, LDTR26B, LDTR27A and LDTR27B; RMZ Osijek added; ATZ Osijek added; Glider activity zones updated; LDOC closed; Editorial.