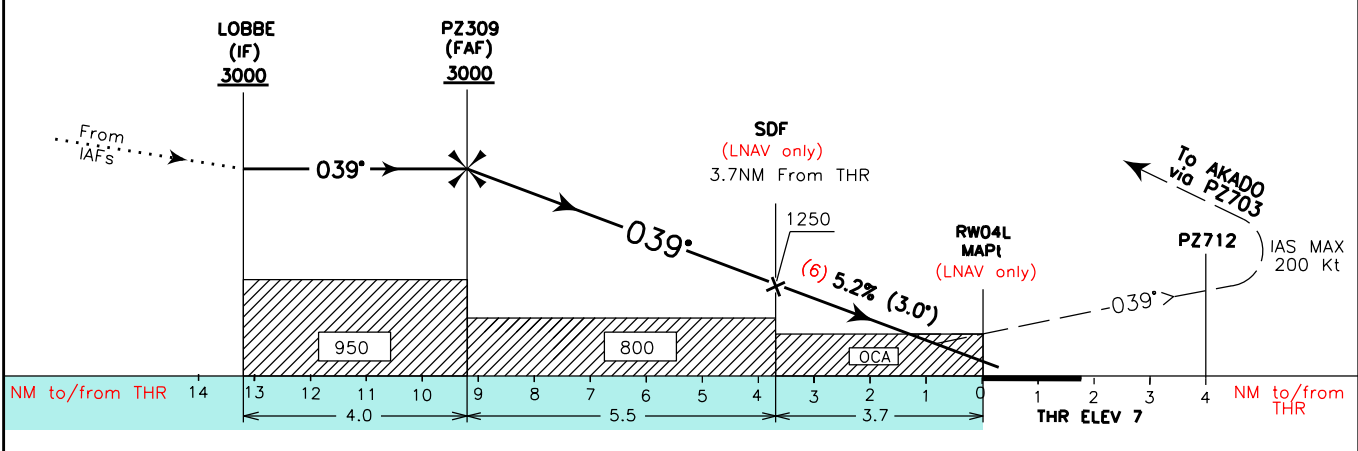


DOC 8168 ED 6 - 2014. AMDT 7

CHANGE: APP. FREQUENCY UPDATED

TRANSITION ALT 6000 MISSED APPROACH: Proceed on RWY heading climbing to 5000FT. At PZ712 turn right on course 117°(with IAS MAX 200 kt) and proceed to PZ703 then turn right bound to AKADO and hold.  
 TCH 15.55M



STRAIGHT IN APPROACH	OCA (OCH)	A B C D				REMARK:	FT PER MIN	GS	FAF-THR	DIST THR	ALT (HGT)	MNM SECT ALT 25NM ARP
		9.2 NM	6 NM	5 NM	4 NM							
LPV	270 (263)	281 (274)	290 (283)	300 (293)	(5) Circling procedure allowed south of RWY and only for RWY 22R as shown in LDG Chart plan view.	530	100	5:32	6 NM	1965(1958)	7200	
LNAV/VNAV	330 (323)	340 (333)	350 (343)	360 (353)		640	120	4:36	5 NM	1650(1643)		
LNAV	510 (503)					745	140	3:57	4 NM	1330(1323)		
CIRCLING (5)	580 (573)	600 (593)	730 (723)	950 (943)		850	160	3:27	3 NM	1010(1003)		
						955	180	3:04	2 NM	695(688)		