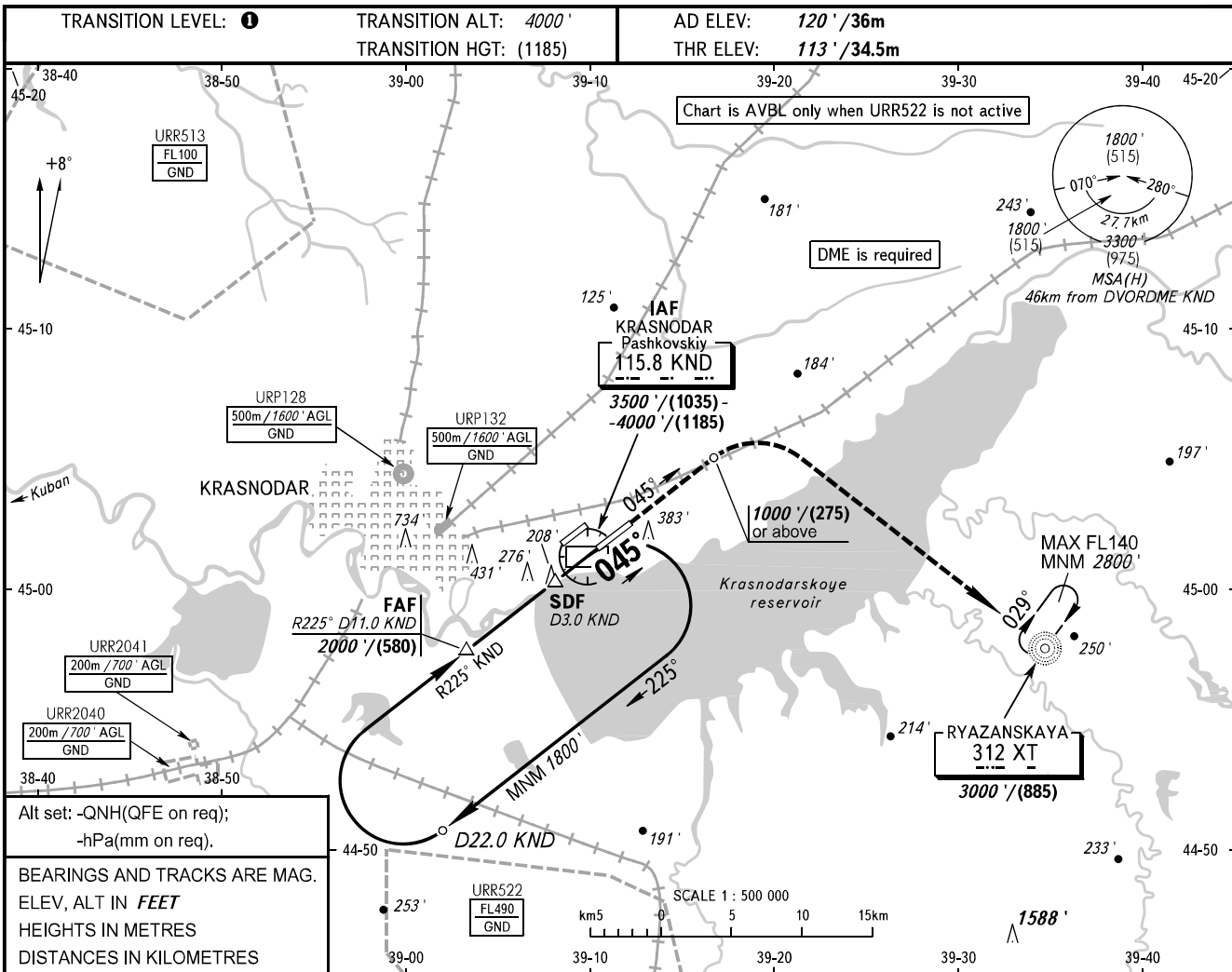


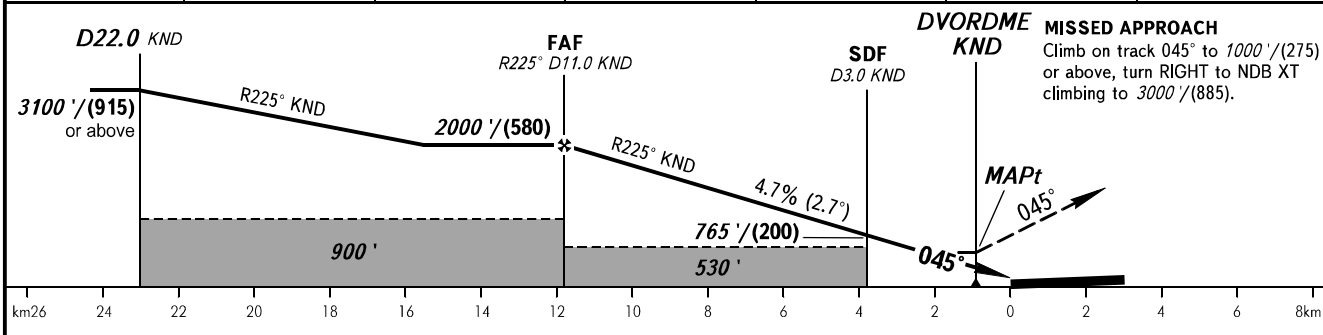
**INSTRUMENT  
APPROACH  
CHART - ICAO**

RADAR	121.300
TOWER	118.200

**KRASNODAR, RUSSIA  
PASHKOVSKIY  
DVOR Y RWY 05R**



DME KND	11.0	10.0	8.0	6.0	4.0	2.0
ALTITUDE	2000'	1840'	1540'	1230'	920'	610'



OCA(H)		A	B	C	D
Straight-in	With SDF	460' (350')	460' (350')	460' (350')	460' (350')
	WO SDF	530' (410')	530' (410')	530' (410')	530' (410')
Approach					
Circling		680' (560')	680' (560')	780' (660')	830' (710')

**1** TRANSITION LEVEL:  
 - FL060 when QNH is 977 hPa (733mm mercury column) or above;  
 - FL070 when QNH is 941 hPa (706mm mercury column) or above,  
 but less than 977 hPa (733mm mercury column).  
**NOTE:**  
 1. MAPt at DVORDME KND. Timing not authorized for defining MAPt.  
 2. Turn before passing MAPt is PROHIBITED.  
 3. Wind shear is expected.

GROUND SPEED	km/h	150	180	210	240	270	300	330	360	390
	m/s	2.0	2.4	2.7	3.1	3.5	3.9	4.3	4.7	5.1
RATE OF DESCENT	ft/min	385	463	540	617	694	771	848	925	1002

CHANGE: HLDG