

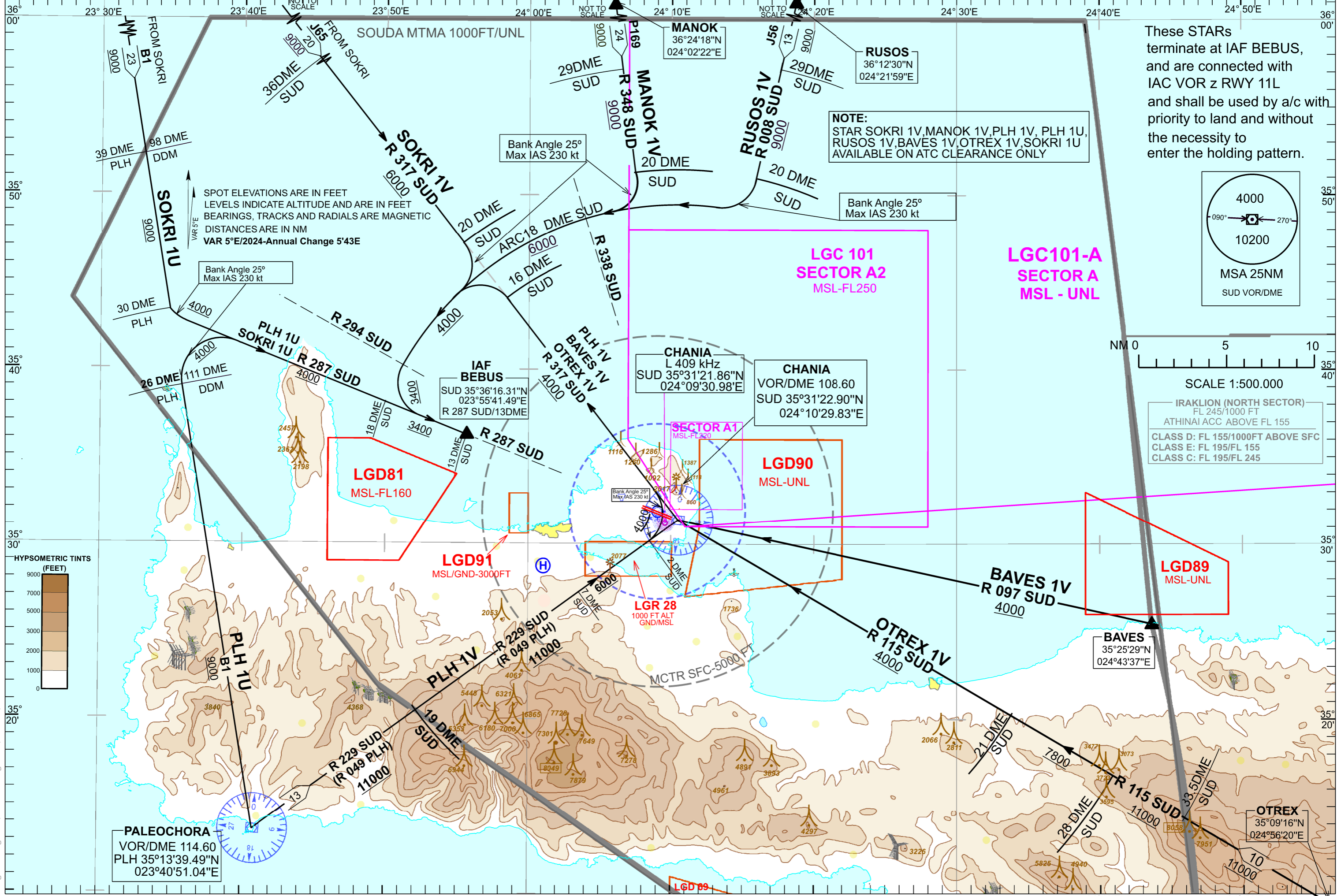
STANDARD ARRIVAL CHART  
INSTRUMENT(STAR)-ICAO

TRANSITION ALTITUDE 11000 ft

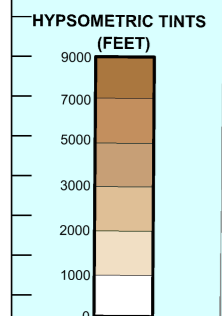
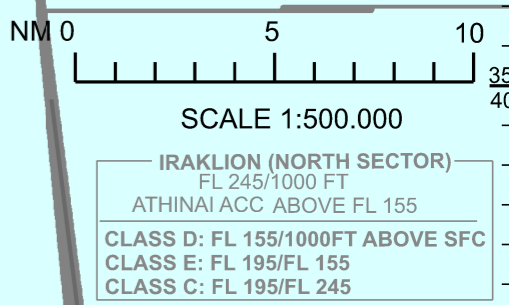
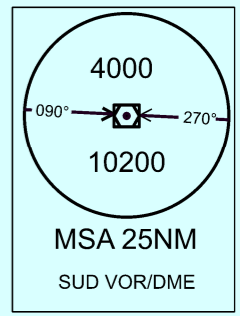
SOUDA APP 118.125, 362.300MHz  
SOUDA TWR 118.125, 257.800MHz ATIS 130.180

CHANIA/IOANNIS DASKALOGIANNIS  
RWY 11L

SOKRI 1V, MANOK 1V, PLH 1V, PLH 1U, RUSOS 1V, BAVES 1V, OTREX 1V, SOKRI 1U



These STARs terminate at IAF BEBUS, and are connected with IAC VOR z RWY 11L and shall be used by a/c with priority to land and without the necessity to enter the holding pattern.



Changes: Mag. Var. RWY designator, terrain, note