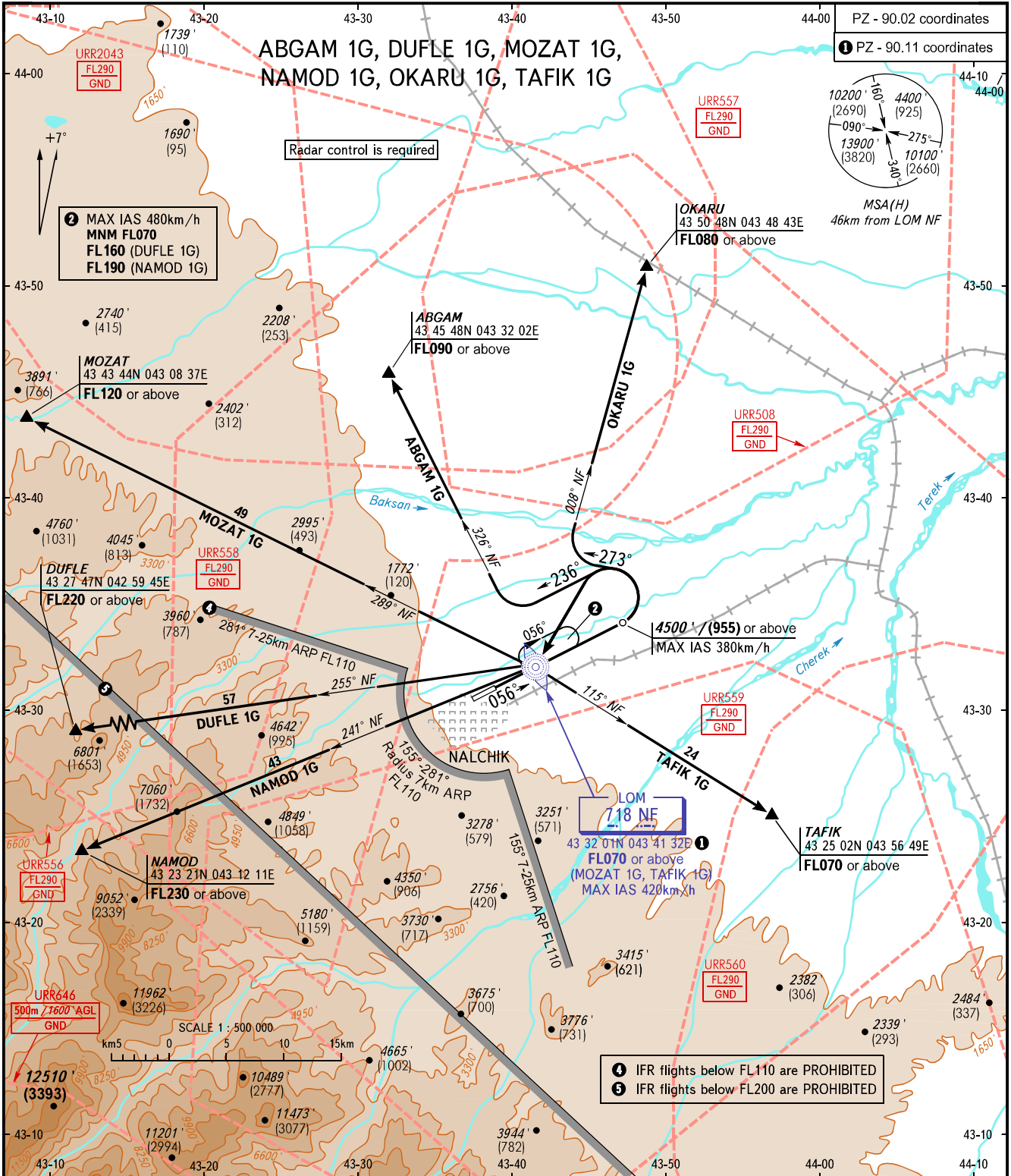


STANDARD DEPARTURE CHART
INSTRUMENT (SID) - ICAO

TRANSITION ALT: 5000'
TRANSITION HGT: (1105)

NALCHIK, RUSSIA
NALCHIK
RWY 06



START	118.300	The minimum climb gradients are as follows (required due to the airspace structure): - 4.4% up to FL090 for SID ABGAM 1G; - 4.0% up to FL080 for SID OKARU 1G.	WARNING: 1. Turn before LOM NF is PROHIBITED. 2. ABGAM 1G - is not AVBL when URR556, URR557, URR2043, URR508, URR558 are active; NAMOD 1G, DUFLE 1G - are not AVBL when URR556, URR2043, URR508, URR557, URR558, URR559, URR560 are active; TAFIK 1G - is not AVBL when URR2043, URR508, URR557, URR559, URR558, URR560 are active; OKARU 1G - is not AVBL when URR508, URR557, URR2043, URR558 are active; MOZAT 1G - is not AVBL when URR556, URR557, URR2043, URR508, URR558, URR559 are active.
APPROACH	126.900		
BEARINGS AND TRACKS ARE MAGNETIC ALTITUDES AND ELEVATIONS ARE FEET HEIGHTS IN METRES DISTANCES IN KILOMETRES		NOTE HGT is given relative to RWY 24 THR ELEV 1378 / 420m.	
Alt set: - QNH (QFE on req); - hPa (mm on req).			

CHANGE: Heading, URR556, NOTE