

**NATIONAL INSTRUMENT APPROACH CHART**

**AA RWY 23R KLEINE-BROGEL (EBBL)**

AD ELEV 192

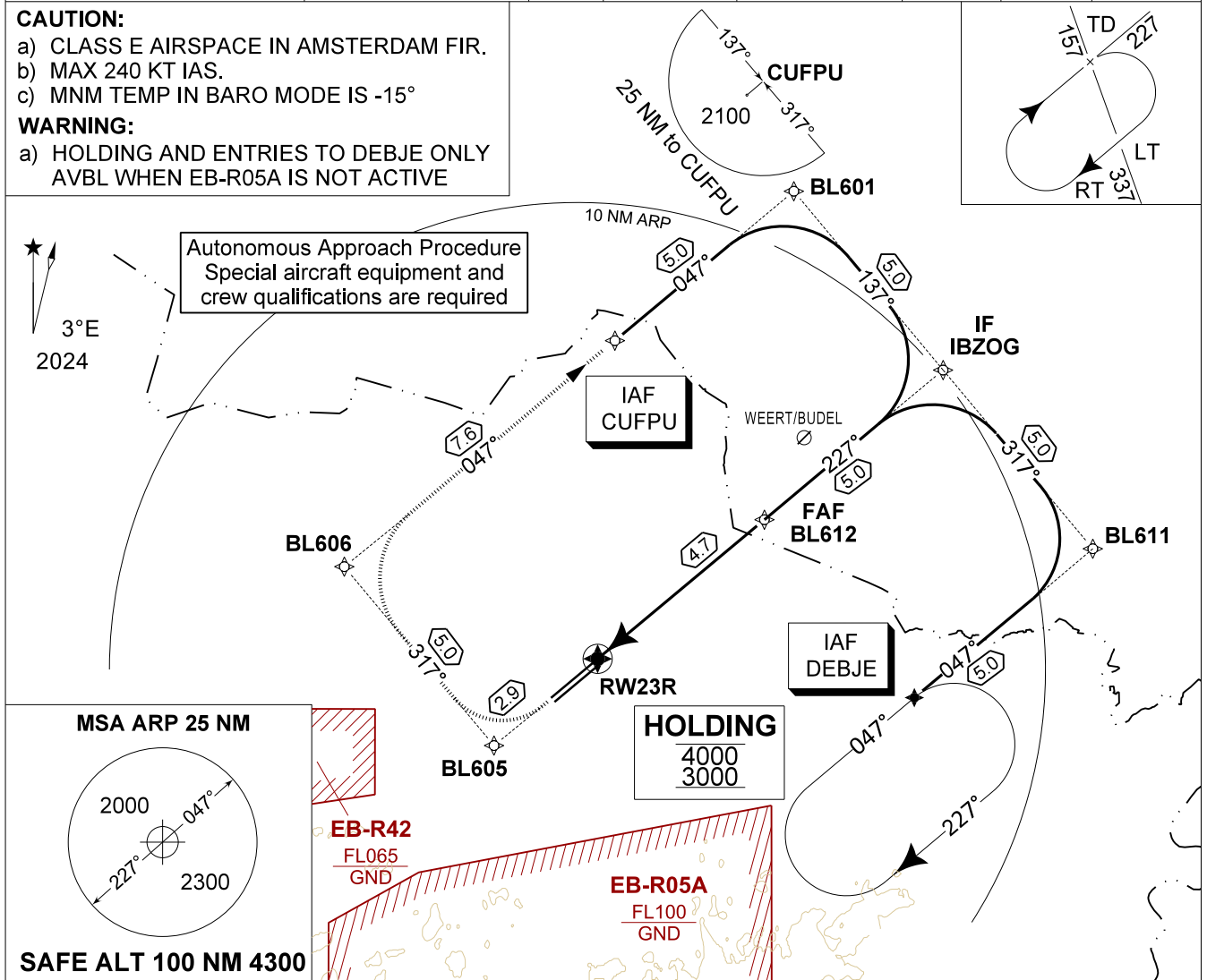
BELGA RADAR 374.400 129.325	KLEINE-BROGEL APP 337.600 134.480	KLEINE-BROGEL TWR 248.075 134.105	KLEINE-BROGEL GND 362.775 122.100
APCH in EGNOS service Volume for APV SBAS usable when available	APP COURSE 227° M 230° T	GS 3.00°	FAF ALT 1700 FT
		DA GEO 581 DA BARO 562	THR 161 FT
			ALS 930 M
			LDA 7926 FT

**CAUTION:**

- a) CLASS E AIRSPACE IN AMSTERDAM FIR.
- b) MAX 240 KT IAS.
- c) MNM TEMP IN BARO MODE IS -15°

**WARNING:**

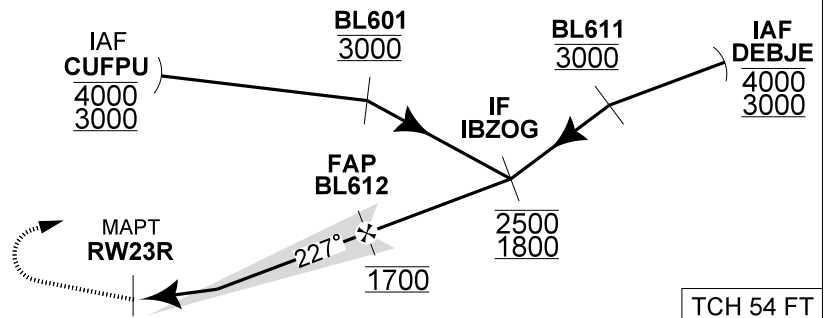
- a) HOLDING AND ENTRIES TO DEBJE ONLY AVBL WHEN EB-R05A IS NOT ACTIVE



THR 23R	5	4	3	2	TA 4500
Altitude	1700	1490	1180	860	
Height	(1539)	(1329)	(1019)	(699)	

**MISSED APPROACH**

MAX SPEED 165 KIAS.  
Climb inbound BL605 then BL606 to reach IAF CUFPU at 3000 FT.



CAT I	THR 161	4.7	TCH 54 FT
-------	---------	-----	-----------

NATIONAL	CATEGORY	C	Data ALS RWY 23R
	AA (GEO) 23R (DA)	<b>581</b> - 1.2 420 (500 - 1.2 / 2.2) GS 3.00°	ANCHOR POINT: ALS Code: Final Course (true): Vertical Path Angle: FAP Altitude: Distance IF - FAP: Anchor Point:
	AA (BARO) 23R (DA)	<b>562</b> - 1.1 401 (500 - 1.1 / 2.1) GS 3.00°	N 51°10.528' / E 005°29.000' / 215 FT <b>E Z P U X</b> 230 °T 3.00° 1700 FT 5.5 NM 54 FT ABOVE THR 23R

**AA RWY 23R** 51°10.10' N  
005°28.19' E **KLEINE-BROGEL (EBBL)**