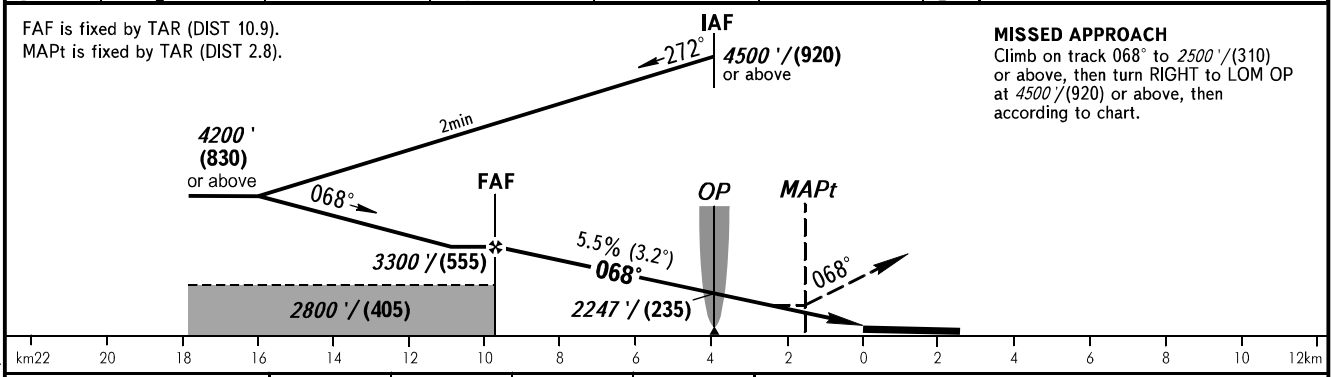
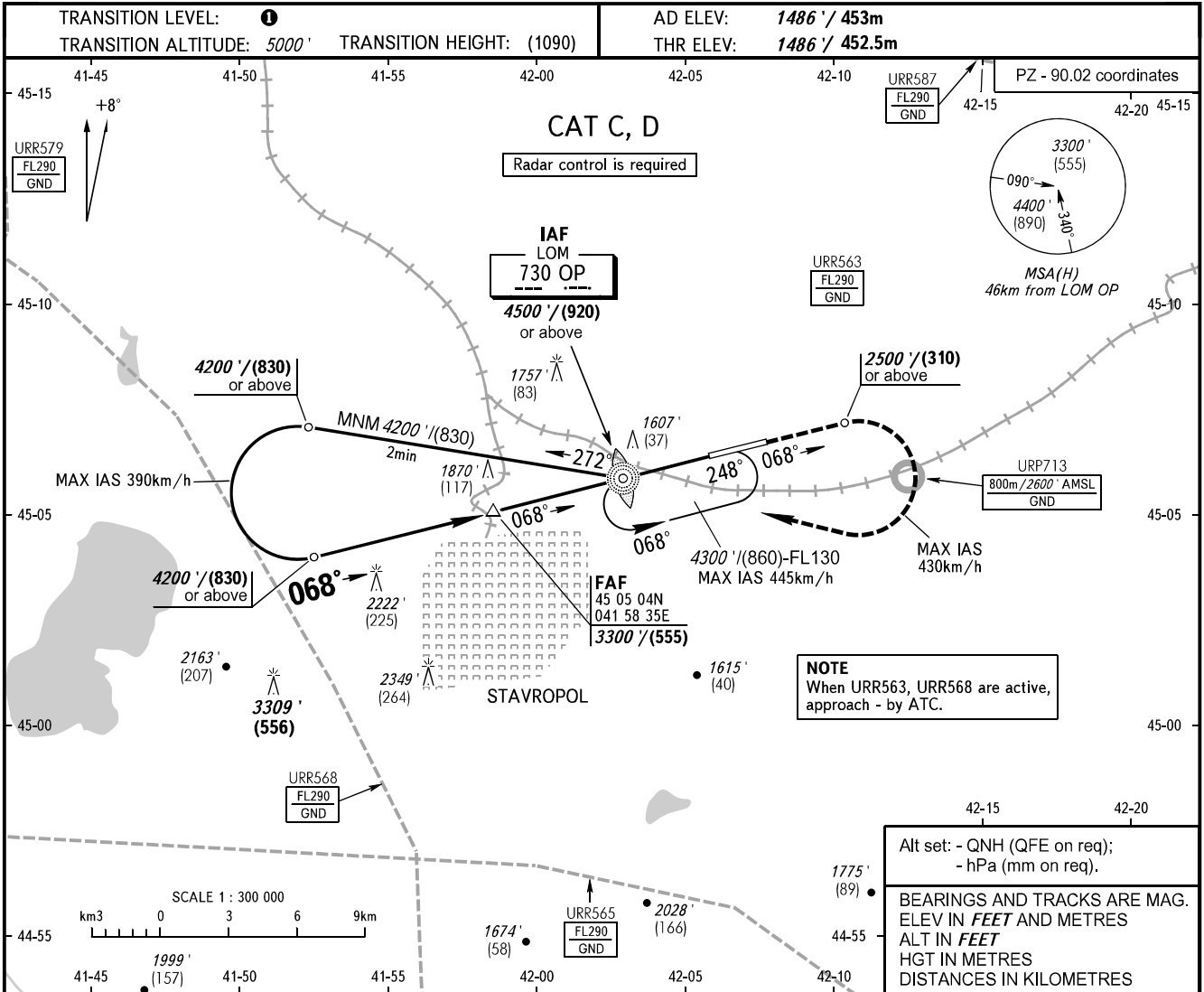


**INSTRUMENT
APPROACH
CHART - ICAO**

**STAVROPOL, RUSSIA
SHPAKOVSKOYE
NDB Z RWY 07**

TOWER **120.900**



| OCA(H) | | A | B | C | D | TRANSITION LEVEL: | | | | | | |
|----------------------|--|---------|---|--------------------|--------------------|---|------|------|------|------|------|------|
| Straight-in Approach | | | | 1860' (370') (115) | 1860' (370') (115) | - FL060 when QNH is 1013 hPa (760mm mercury column) or above; | | | | | | |
| | | | | | | - FL070 when QNH is 977 hPa (733mm mercury column) or above, but less than 1013 hPa (760mm mercury column); | | | | | | |
| Circling | | | | 2150' (670') (205) | 2270' (780') (240) | - FL080 when QNH is less than 977 hPa (733mm mercury column). | | | | | | |
| GROUND SPEED | | km/h | | 150 | 180 | 210 | 240 | 270 | 300 | 330 | 360 | 390 |
| FAF - MAPt 8080m | | min:sec | | 3:13 | 2:41 | 2:18 | 2:01 | 1:47 | 1:36 | 1:28 | 1:20 | 1:13 |
| RATE OF DESCENT | | m/s | | 2.3 | 2.8 | 3.2 | 3.7 | 4.1 | 4.6 | 5.1 | 5.5 | 6.0 |
| | | ft/min | | 451 | 541 | 632 | 722 | 812 | 902 | 992 | 1082 | 1173 |

CHANGE: Limiting bearing line withdrawn, URP713