

WAAS CH 53522 W10A	APP CRS 105°	Rwy Idg TDZE Apt Elev	7001 318 331
--	------------------------	-----------------------------	---

RNAV (GPS) RWY 10

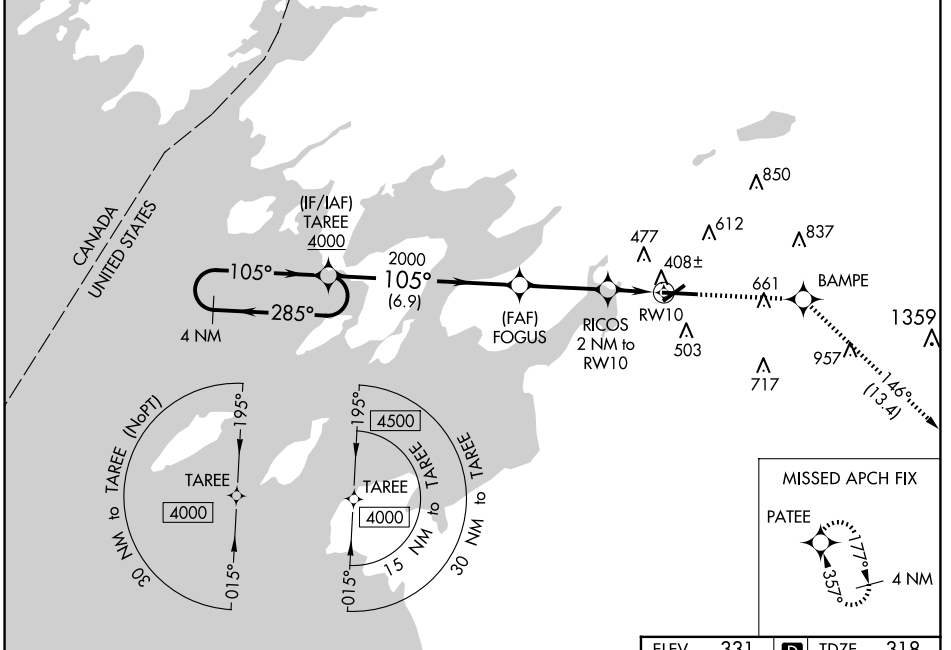
WATERTOWN INTL (ART)

RNP APCH.

⚠ For uncompensated Baro-VNAV systems, LNAV/VNAV NA below -20°C or above 54°C. Rwy 10 helicopter visibility reduction below ¾ SM NA.

MISSED APPROACH: Climb to 3600 direct BAMPE and on track 146° to PATEE and hold.

ASOS 132.325	KGTB ATIS 119.525	WHEELER-SACK APP CON 124.875 307.125	CLNC DEL 120.8	UNICOM 123.0 (CTAF) 0
------------------------	-----------------------------	--	--------------------------	---------------------------------



NE-2, 20 MAR 2025 to 17 APR 2025

NE-2, 20 MAR 2025 to 17 APR 2025

4 NM Holding Pattern		3600 BAMPE		tr 146°		PATEE	
4000 ← 285°		FOGUS 2000		*LNNAV only.		105° 373	
GP 3.00° TCH 47		RICOS 2 NM to RWY 10		* 1 NM to RWY 10		0.3% UP 6999 X 150	
← 105°		* 980		RWY 10		7001 X 150	
← 285°		← 6.9 NM		← 3.2 NM		← 1 NM	
← 105°		← 3.2 NM		← 1 NM		← 1 NM	
CATEGORY	A	B	C	D	HIRL Rwy 7-25 0		
LPV DA		568-¾	250 (300-¾)		MIRL Rwy 10-28 0		
LNNAV/VNAV DA		578-¾	260 (300-¾)				
LNNAV MDA		660-1	342 (400-1)				
CIRCLING	960-1	629 (700-1)	980-1¼ 649 (700-1¼)	1080-2½ 749 (800-2½)			