

STANDARD ARRIVAL CHART-INSTRUMENT

RJOT / TAKAMATSU

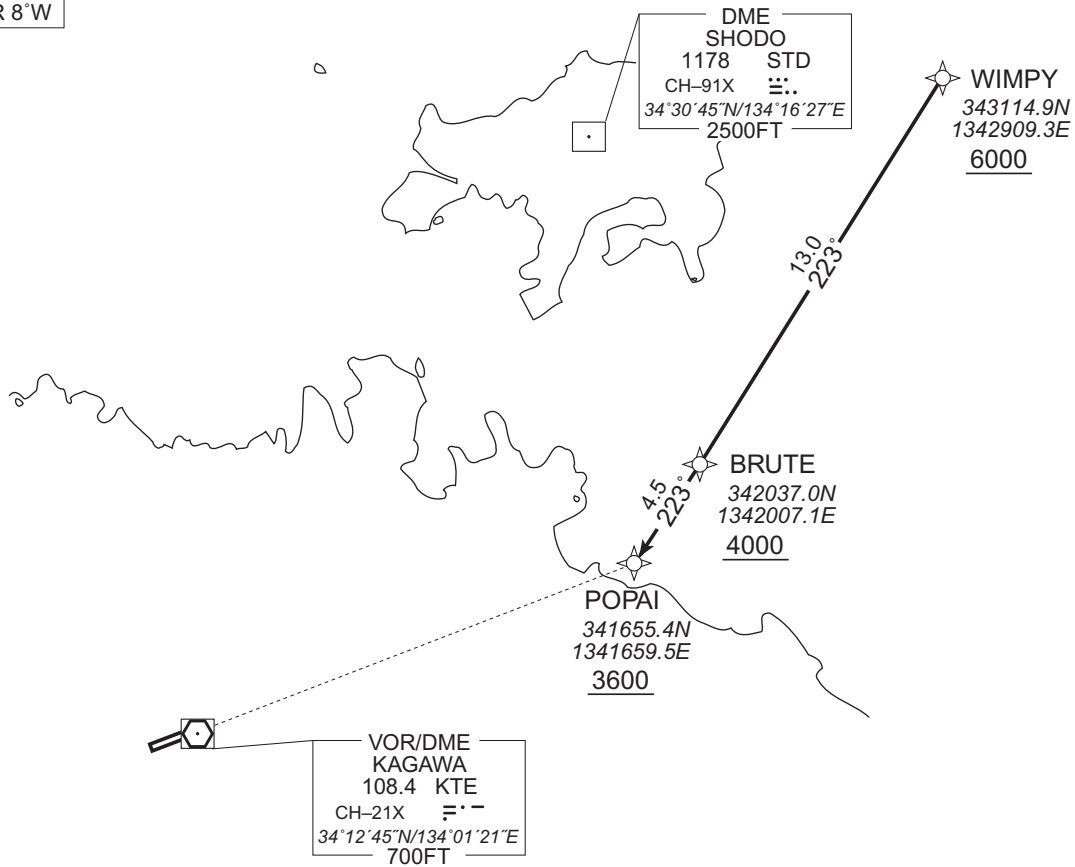
RNAV STAR RWY26

POPAI ARRIVAL

RNAV1

Note 1) DME/DME/IRU or GNSS required.
2) RADAR service required.

VAR 8°W



From WIMPY at or above 6000FT, to BRUTE at or above 4000FT, to POPAI at or above 3600FT.

Critical DME	STD : WIMPY - BRUTE, 2.0NM to POPAI - POPAI KTE : WIMPY - BRUTE
DME GAP	-
Inappropriate Nav aids	See AD1.1.6.10.3. Inappropriate NAVAIDS for RNAV1

Serial Number	Path Descriptor	Waypoint Identifier	Fly Over	Course °M(°T)	Magnetic Variation	Distance (NM)	Turn Direction	Altitude (FT)	Speed (KIAS)	Vertical Angle	Navigation Specification
001	IF	WIMPY	-	-	-7.6	-	-	+6000	-	-	RNAV1
002	TF	BRUTE	-	223 (215.1)	-7.6	13.0	-	+4000	-	-	RNAV1
003	TF	POPAI	-	223 (215.0)	-7.6	4.5	-	+3600	-	-	RNAV1

CHANGE : Critical DME added. TAKAMATSU TACAN abolished.