

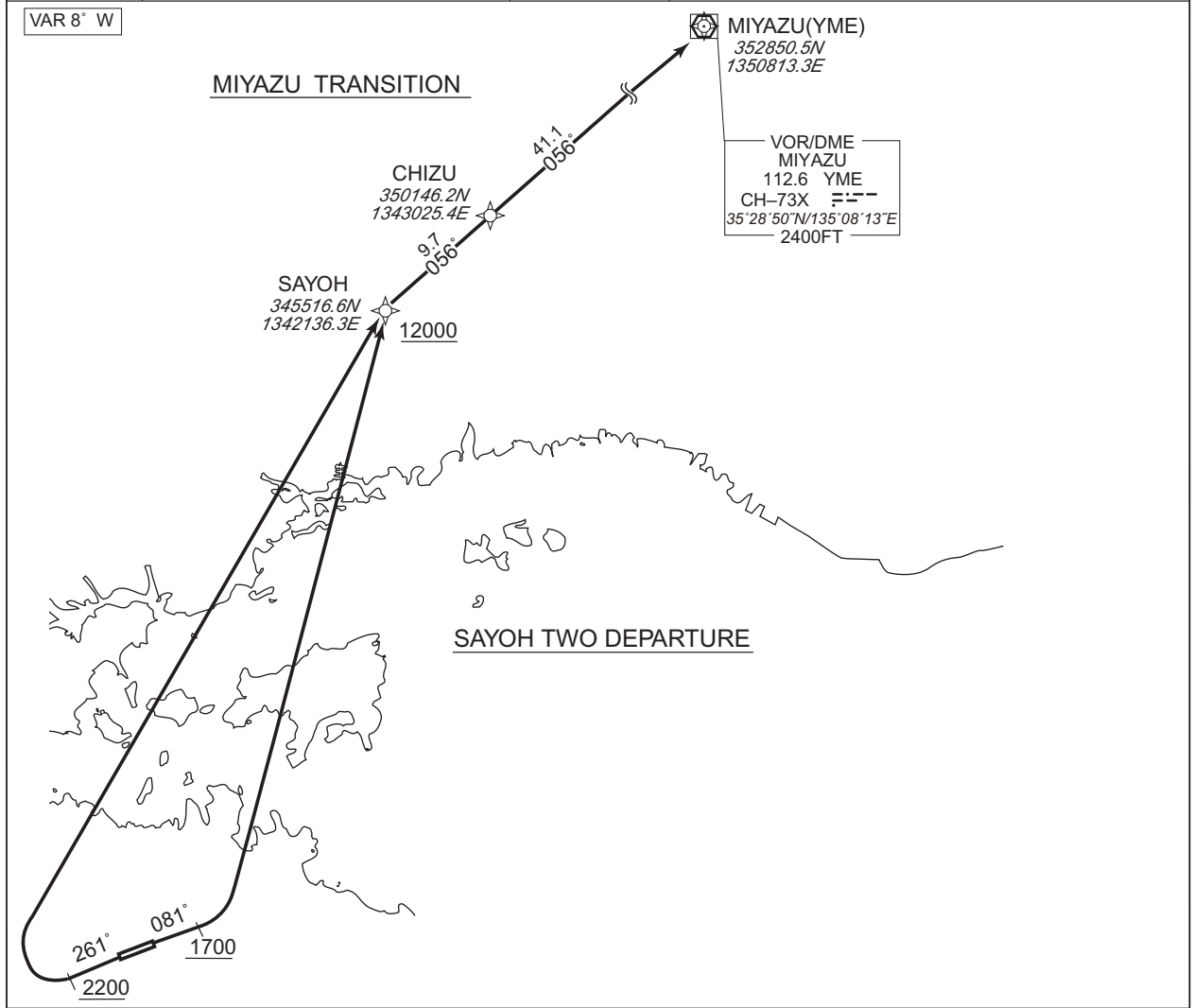
STANDARD DEPARTURE CHART-INSTRUMENT

RJOT / TAKAMATSU

RNAV SID and TRANSITION

<p>SAYOH TWO DEPARTURE MIYAZU TRANSITION</p>	<p>RNAV1</p>
---	---------------------

<p>Note 1) DME/DME/IRU or GNSS required. ※The aircraft equipped with only DME/DME/IRU must be able to update its position without delay at the starting point of take-off roll. 2) RADAR service required.</p>	<p>Critical DME</p>	<p>RWY08 : OYE 1.0NM from DER - 3.0NM from DER STD 1.0NM from DER - 3.0NM from DER KTE 25.0NM to SAYOH - 21.0NM to SAYOH RWY26 : KTE 2.0NM from DER - 3.0NM from DER 25.0NM to SAYOH - 20.0NM to SAYOH STD 2.0NM from DER - 3.0NM from DER 44.0NM to SAYOH - 35.0NM to SAYOH OYE 14.0NM to SAYOH - SAYOH MIYAZU TRANSITION STD : SAYOH - 1.7NM to CHIZU YME : SAYOH - 1.7NM to CHIZU</p>
<p>DME GAP RWY08 : DER - 1.0NM from DER RWY26 : DER - 2.0NM from DER MIYAZU TRANSITION 1.7NM to CHIZU - YME</p>		
<p>Inappropriate Nav aids See AD1.1.6.10.3. Inappropriate NAVAIDs for RNAV1</p>		



CHANGE : Critical DME. DME GAP.

<p>SAYOH TWO DEPARTURE RWY08 : Climb on HDG081° at or above 1700FT, turn left direct to SAYOH at or above 12000FT. RWY26 : Climb on HDG261° at or above 2200FT, turn right direct to SAYOH at or above 12000FT.</p> <p>Note RWY08 : 5.0% climb gradient required up to 1700FT. OBST ALT 755FT located at 0.7NM 100° FM end of RWY08. RWY26 : 6.6% climb gradient required up to 2200FT. OBST ALT 1772FT located at 3.3NM 255° FM end of RWY26.</p>

<p>MIYAZU TRANSITION From SAYOH, to CHIZU, to YME.</p>

STANDARD DEPARTURE CHART-INSTRUMENT

RJOT / TAKAMATSU

RNAV SID and TRANSITION

SAYOH TWO DEPARTURE

RWY08

Serial Number	Path Descriptor	Waypoint Identifier	Fly Over	Course °M(°T)	Magnetic Variation	Distance (NM)	Turn Direction	Altitude (FT)	Speed (KIAS)	Vertical Angle	Navigation Specification
001	VA	—	—	081 (072.9)	-7.8	—	—	+1700	—	—	RNAV1
002	DF	SAYOH	—	—	-7.8	—	L	+12000	—	—	RNAV1

RWY26

Serial Number	Path Descriptor	Waypoint Identifier	Fly Over	Course °M(°T)	Magnetic Variation	Distance (NM)	Turn Direction	Altitude (FT)	Speed (KIAS)	Vertical Angle	Navigation Specification
001	VA	—	—	261 (252.9)	-7.8	—	—	+2200	—	—	RNAV1
002	DF	SAYOH	—	—	-7.8	—	R	+12000	—	—	RNAV1

MIYAZU TRANSITION

Serial Number	Path Descriptor	Waypoint Identifier	Fly Over	Course °M(°T)	Magnetic Variation	Distance (NM)	Turn Direction	Altitude (FT)	Speed (KIAS)	Vertical Angle	Navigation Specification
001	IF	SAYOH	—	—	-7.8	—	—	—	—	—	RNAV1
002	TF	CHIZU	—	056 (048.0)	-7.8	9.7	—	—	—	—	RNAV1
003	TF	YME	—	056 (048.6)	-7.8	41.1	—	—	—	—	RNAV1

CHANGE : VAR. SID renamed. PROC course.