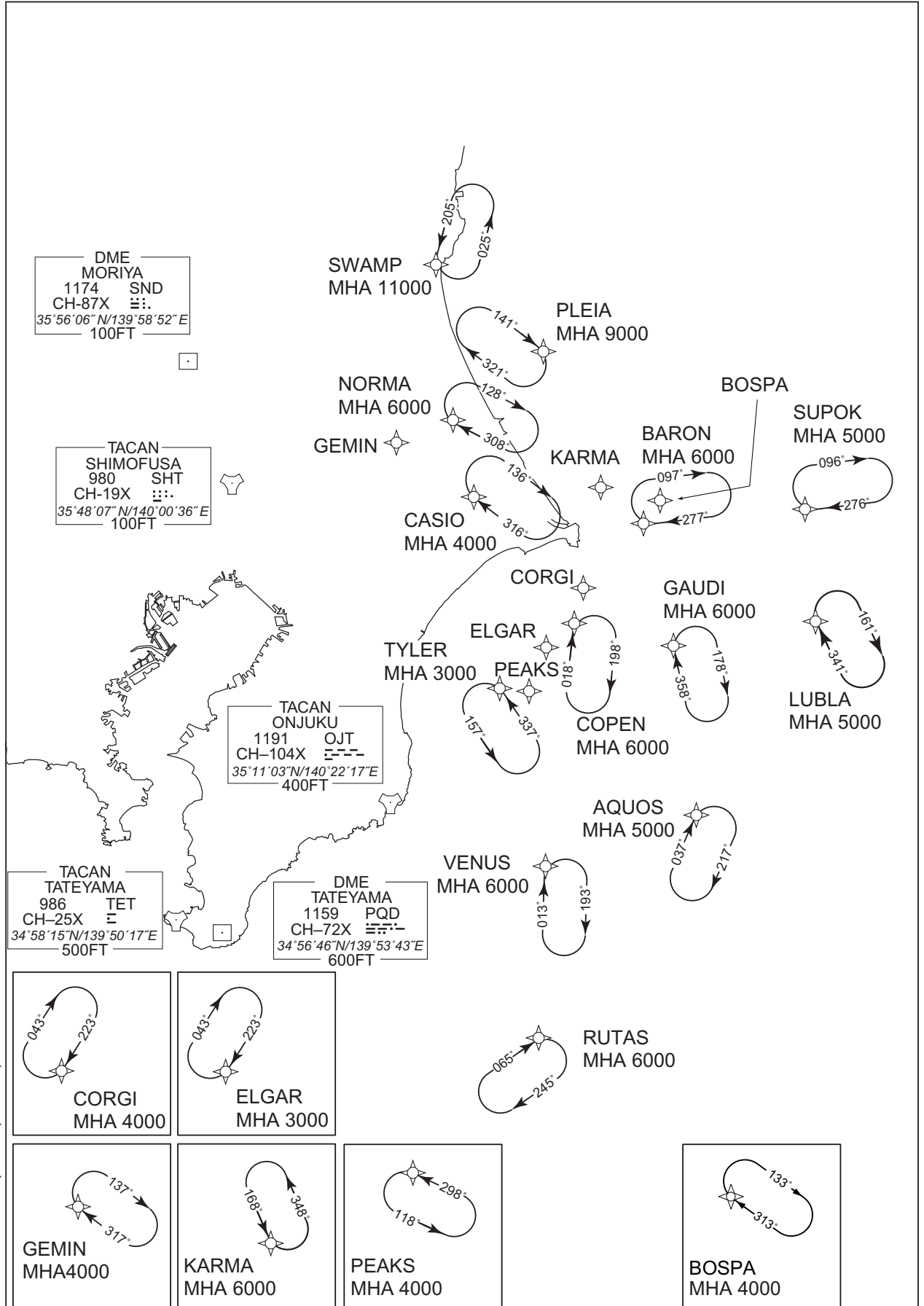


RJAA / NARITA INTL

RNAV HLDG PATTERN



RJAA / NARITA INTL

RNAV HLDG PATTERN

Path	Waypoint Identifier	Inbound Course °M(°T)	Magnetic Variation	Outbound Time (MIN)	Outbound Distance (NM)	Turn Direction	Minimum Altitude (FT)	Maximum Altitude (FT)	Speed (KIAS)	Navigation Specification
Hold	AQUOS	037 (029.1)	-7.5	1.0(-14000) 1.5(+14001)	—	R	5000	—	-230(-14000) -240(+14001)	RNAV1
Hold	BARON	277 (270.0)	-7.5	1.0(-14000) 1.5(+14001)	—	R	6000	—	-230(-14000) -240(+14001)	RNAV1
Hold	CASIO	316 (308.6)	-7.5	1.0(-14000) 1.5(+14001)	—	R	4000	—	-230(-14000) -240(+14001)	RNAV1
Hold	COPEN	018 (010.5)	-7.5	1.0(-14000) 1.5(+14001)	—	R	6000	—	-230(-14000) -240(+14001)	RNAV1
Hold	CORGI	223 (215.8)	-7.5	1.0(-14000) 1.5(+14001)	—	R	4000	—	-230(-14000) -240(+14001)	RNAV1
Hold	ELGAR	223 (215.7)	-7.5	1.0(-14000) 1.5(+14001)	—	R	3000	—	-230(-14000) -240(+14001)	RNAV1
Hold	GAUDI	358 (351.0)	-7.5	1.0(-14000) 1.5(+14001)	—	R	6000	—	-230(-14000) -240(+14001)	RNAV1
Hold	GEMIN	317 (309.1)	-7.5	1.0(-14000) 1.5(+14001)	—	R	4000	—	-230(-14000) -240(+14001)	RNAV1
Hold	KARMA	168 (160.3)	-7.5	1.0(-14000) 1.5(+14001)	—	L	6000	—	-230(-14000) -240(+14001)	RNAV1
Hold	LUBLA	341 (333.9)	-7.5	1.0(-14000) 1.5(+14001)	—	R	5000	—	-230(-14000) -240(+14001)	RNAV1
Hold	NORMA	308 (300.0)	-7.5	1.0(-14000) 1.5(+14001)	—	R	6000	—	-230(-14000) -240(+14001)	RNAV1
Hold	PEAKS	298 (290.2)	-7.5	1.0(-14000) 1.5(+14001)	—	L	4000	—	-230(-14000) -240(+14001)	RNAV1
Hold	PLEIA	141 (133.1)	-7.5	1.0(-14000) 1.5(+14001)	—	R	9000	—	-230(-14000) -240(+14001)	RNAV1
Hold	RUTAS	065 (057.9)	-7.5	1.0(-14000) 1.5(+14001)	—	R	6000	—	-230(-14000) -240(+14001)	RNAV1
Hold	SUPOK	276 (268.6)	-7.5	1.0(-14000) 1.5(+14001)	—	R	5000	—	-230(-14000) -240(+14001)	RNAV1
Hold	SWAMP	205 (197.0)	-7.5	1.0(-14000) 1.5(+14001)	—	L	11000	—	-230(-14000) -240(+14001)	RNAV1
Hold	TYLER	337 (329.8)	-7.5	1.0(-14000) 1.5(+14001)	—	L	3000	—	-230(-14000) -240(+14001)	RNAV1
Hold	VENUS	013 (005.8)	-7.5	1.0(-14000) 1.5(+14001)	—	R	6000	—	-230(-14000) -240(+14001)	RNAV1

Path	Waypoint Identifier	Inbound Course °M(°T)	Magnetic Variation	Outbound Time (MIN)	Turn Direction	Minimum Altitude (FT)	Maximum Altitude (FT)	Speed (KIAS)
Hold	BOSPA	313 (305.7)	-7.8	1.0(-14000) 1.5(+14001)	R	4000	—	-230(-14000) -240(+14001)

CHANGE : HLDG pattern(BOSPA) added.

RJAA / NARITA INTL

RNAV HLDG PATTERN

Waypoint Coordinates

Waypoint Identifier	Coordinates	Waypoint Identifier	Coordinates
AQUOS	351229.7N / 1410942.5E	LUBLA	353235.0N / 1412550.8E
BARON	354551.0N / 1410112.0E	NORMA	355900.8N / 1403254.0E
CASIO	355021.4N / 1403556.1E	PEAKS	352507.2N / 1404352.7E
COPEN	353303.7N / 1404939.2E	PLEIA	360734.8N / 1404745.4E
CORGI	353829.8N / 1405138.9E	RUTAS	344349.3N / 1404034.2E
ELGAR	353129.2N / 1404527.4E	SUPOK	354614.1N / 1412810.0E
GAUDI	353002.4N / 1410418.1E	SWAMP	361914.4N / 1403217.0E
GEMIN	355738.6N / 1402450.7E	TYLER	352650.5N / 1403807.8E
KARMA	355042.9N / 1405512.4E	VENUS	350440.1N / 1404309.7E

Waypoint Identifier	Coordinates
BOSPA	354757.4N / 1410511.3E

CHANGE : BOSPA added.