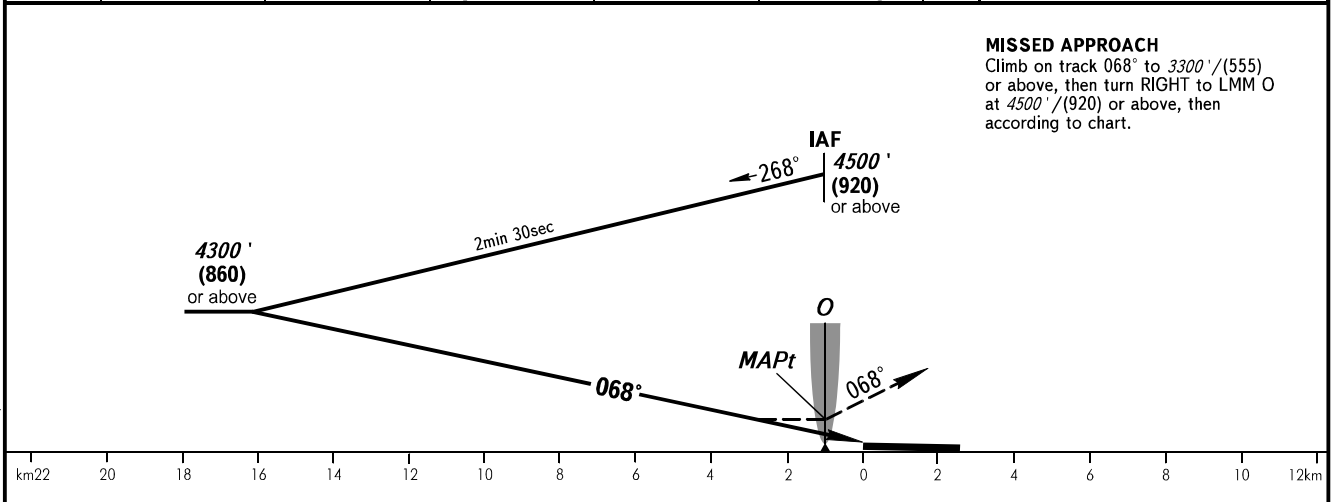
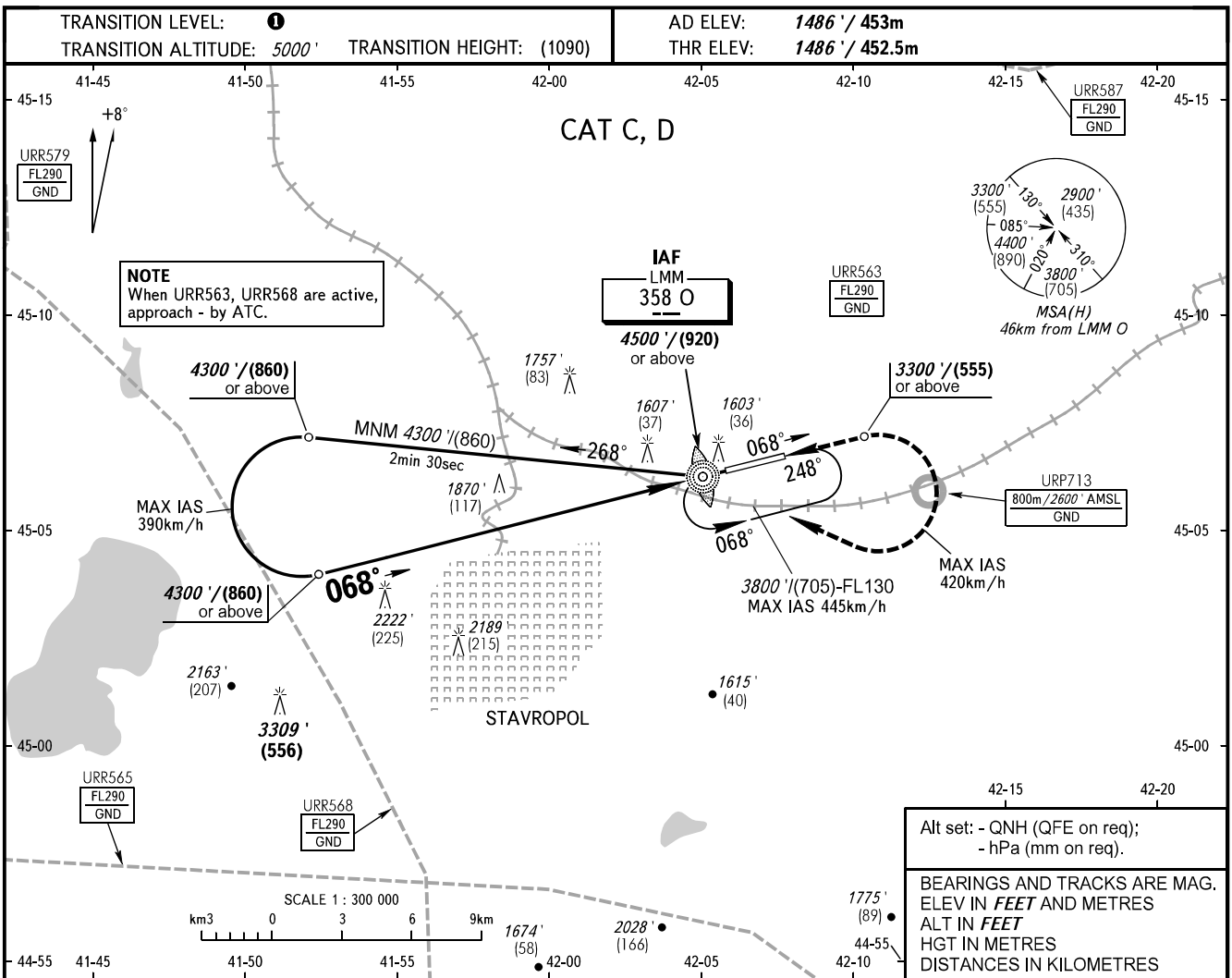


**INSTRUMENT
APPROACH
CHART - ICAO**

TOWER **120.900**

STAVROPOL, RUSSIA
SHPAKOVSKOYE
NDB V RWY 07



OCA(H)		A	B	C	D
Straight-in Approach				2520' (1030') (315)	2520' (1030') (315)
Circling				2520' (1030') (315)	2520' (1030') (315)

- ① **TRANSITION LEVEL:**
- FL060 when QNH is 1013 hPa (760mm mercury column) or above;
 - FL070 when QNH is 977 hPa (733mm mercury column) or above, but less than 1013 hPa (760mm mercury column);
 - FL080 when QNH is less than 977 hPa (733mm mercury column).

CHANGE: Limiting bearing line withdrawn, URP713