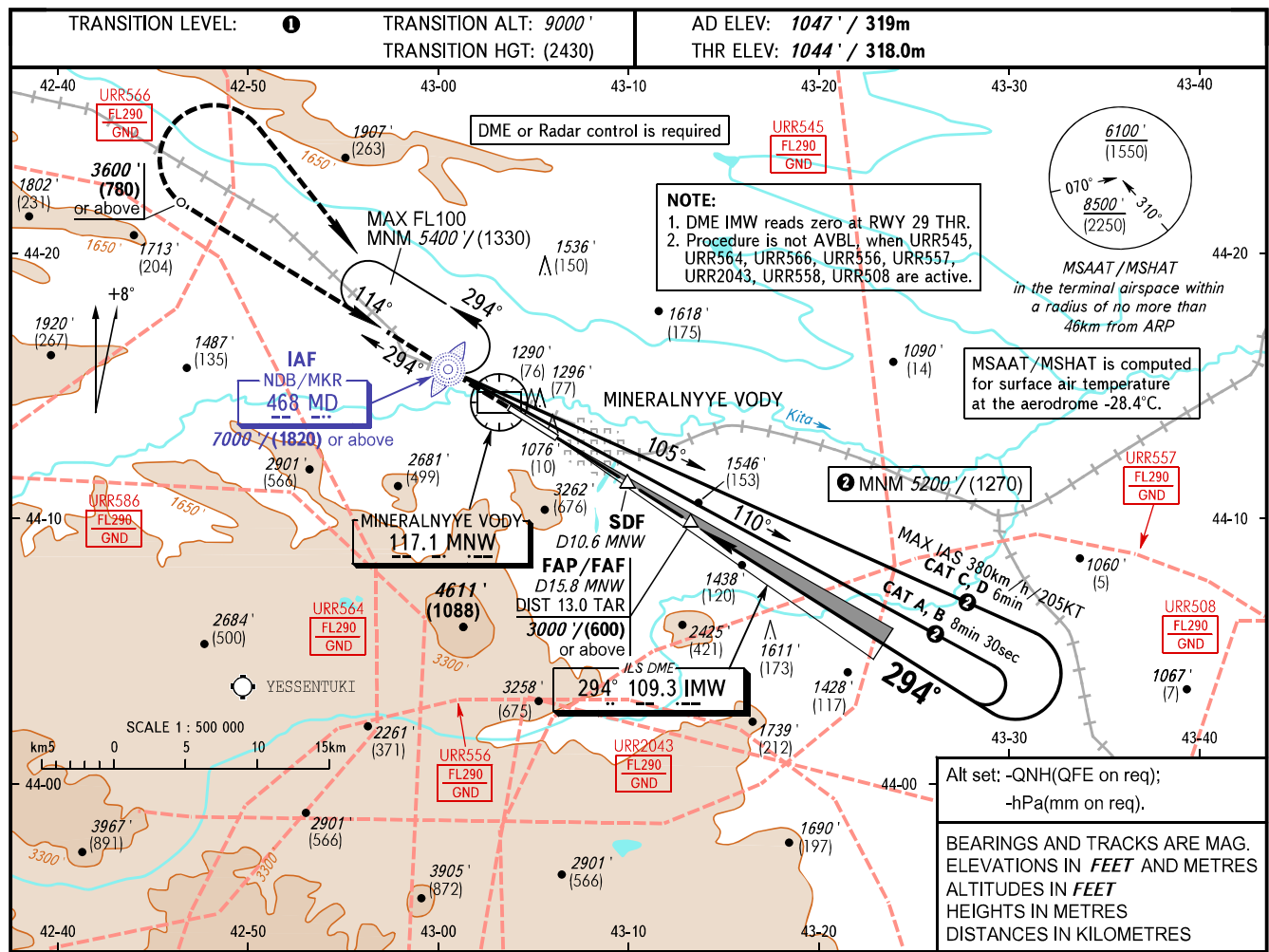


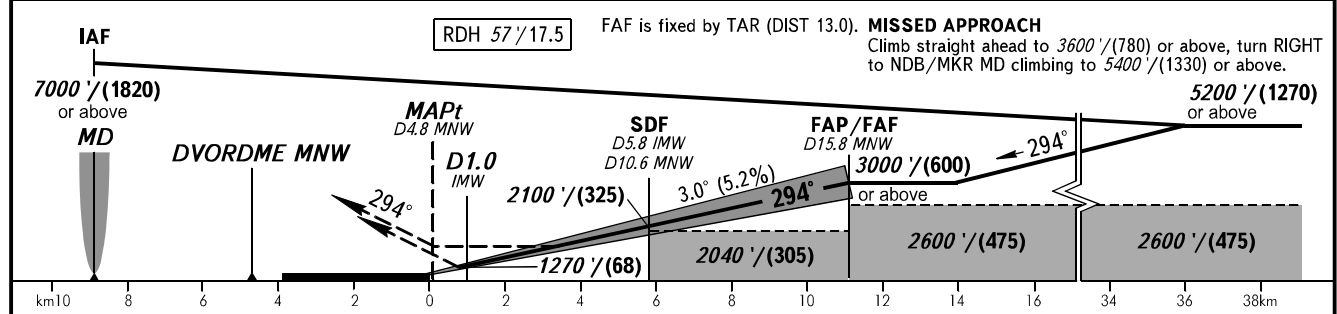
**INSTRUMENT
APPROACH
CHART - ICAO**

RADAR **120.700**
START **128.000**

MINERALNYYE VODY, RUSSIA
MINERALNYYE VODY
ILS X CAT I, LOC X RWY 29



DME MNW	10.0	12.0	14.0
ALTITUDE/HEIGHT	2006' / (293)	2347' / (397)	2688' / (501)



OCA(H)		A	B	C	D
Straight-in	CAT I	1206' (162') (50)	1218' (174') (54)	1226' (182') (56)	1237' (193') (59)
	Approach	1700' (660') (205)	1700' (660') (205)	1700' (660') (205)	1700' (660') (205)
Approach	LOC	2040' (1000') (305)	2040' (1000') (305)	2040' (1000') (305)	2040' (1000') (305)
	WO SDF	2040' (1000') (305)	2040' (1000') (305)	2040' (1000') (305)	2040' (1000') (305)
Circling		1890' (840') (260)	1890' (840') (260)	2180' (1140') (350)	2320' (1280') (395)

① TRANSITION LEVEL:
- FL100 when QNH is 1013 hPa (760mm mercury column) or above;
- FL110 when QNH is 977 hPa (733mm mercury column) or above, but less than 1013 hPa (760mm mercury column);
- FL120 when QNH is less than 977 hPa (733mm mercury column).
Visual manoeuvring south of the AD is PROHIBITED.

GROUND SPEED	km/h	150	180	210	240	270	300	330	360
	kt	81	97	113	130	146	162	178	194
FAF-MAPt 10945m	min:sec	4:23	3:39	3:08	2:44	2:26	2:11	1:59	1:23
RATE OF DESCENT	m/s	2.2	2.6	3.0	3.5	3.9	4.3	4.8	5.2
	ft/min	427	512	597	682	768	853	938	1024