

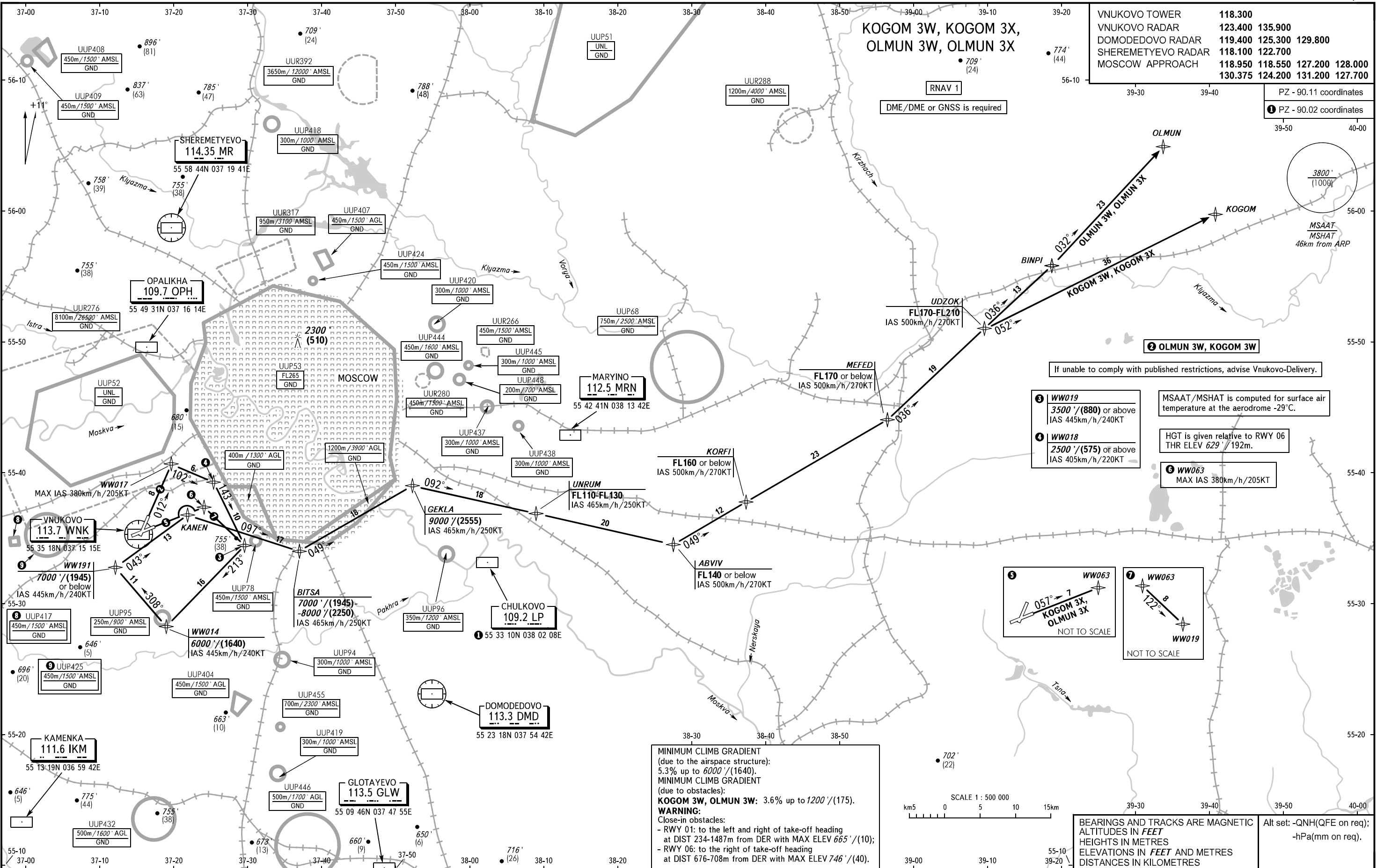
STANDARD DEPARTURE CHART  
INSTRUMENT (SID) - ICAO

TRANSITION ALT: 10000'  
TRANSITION HGT: (2900)

MOSCOW, RUSSIA  
VNUKOVO  
RNAV RWY 01, 06

VNUKOVO TOWER	118.300
VNUKOVO RADAR	123.400 135.900
DOMODEDOVO RADAR	119.400 125.300 129.800
SHEREMETYEVO RADAR	118.100 122.700
MOSCOW APPROACH	118.950 118.550 127.200 128.000
	130.375 124.200 131.200 127.700

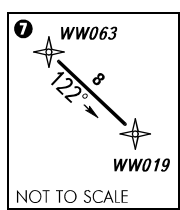
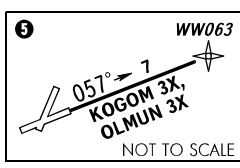
PZ - 90.11 coordinates  
① PZ - 90.02 coordinates



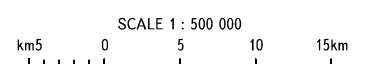
- ③ WW019  
3500'/(880) or above  
IAS 445km/h/240KT
- ④ WW018  
2500'/(575) or above  
IAS 405km/h/220KT
- ⑤ WW063  
MAX IAS 380km/h/205KT

MSAAT/MSHAT is computed for surface air temperature at the aerodrome -29°C.

HGT is given relative to RWY 06  
THR ELEV 629' / 192m.



MINIMUM CLIMB GRADIENT  
(due to the airspace structure):  
5.3% up to 6000'/(1640).  
MINIMUM CLIMB GRADIENT  
(due to obstacles):  
**KOGOM 3W, OLMUN 3W:** 3.6% up to 1200'/(175).  
**WARNING:**  
Close-in obstacles:  
- RWY 01: to the left and right of take-off heading  
at DIST 234-1487m from DER with MAX ELEV 665'/(10);  
- RWY 06: to the right of take-off heading  
at DIST 676-708m from DER with MAX ELEV 746'/(40).



BEARINGS AND TRACKS ARE MAGNETIC  
ALTITUDES IN FEET  
HEIGHTS IN METRES  
ELEVATIONS IN FEET AND METRES  
DISTANCES IN KILOMETRES

Alt set: -QNH(QFE on req);  
-hPa(mm on req).