

MERIDIAN, MISSISSIPPI

RNAV (GPS) RWY 1L

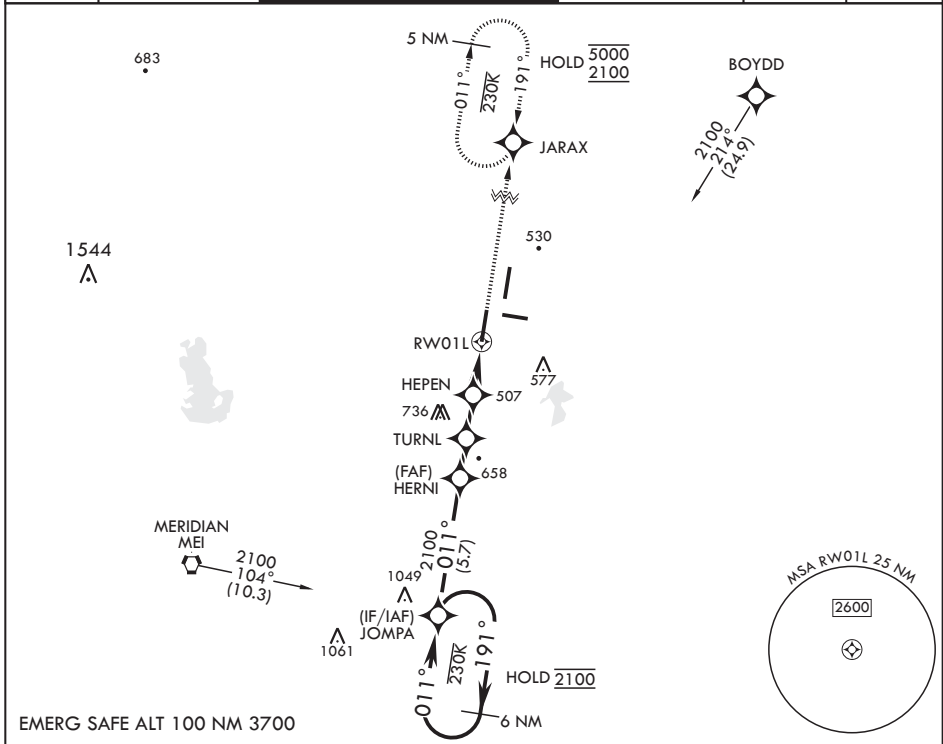
APCH CRS 011°	Rwy Idg 8003
	TDZE 254
	Arprt Elev 316

AL-5079 (USN)

MERIDIAN NAS (MC CAIN FLD) (KNMM)

RNP APCH.	ALSF-1	MISSED APPROACH: Climb to 2100 direct JARAX and hold.
<p>▼ * When ALS inop, increase CAT AB vis to 1 mile, CAT CDE to 1 3/8 miles.</p>		

ATIS * 290.525	APP CON 120.5 269.325 S 379.275 N 120.95 276.4 W 121.275 348.7 E	MC CAIN TOWER * 126.2 340.2 RWY 01L, 19L AND 28 126.2 360.2 RWY 01R, 19R AND 10	MC CAIN GND CON 336.4	CLNC DEL 301.0	ASR/PAR
--------------------------	--	---	---------------------------------	--------------------------	---------



EMERG SAFE ALT 100 NM 3700

6 NM holding pattern	JOMPA	HERNI	TURNL	HEPEN	RW01L	JARAX	ELEV 316	TDZE 254
2100	2100	1500	940	1,4 NM to RW01L				
011°	011°	3.00° TCH 50						
191°								
1.7 NM	1.8 NM	2.2 NM						

CATEGORY	A	B	C	D	E
LNAV MDA*	760-1/2 506 (500-1/2)	760-1 506 (500-1)	760-1 506 (500-1)	760-1 506 (500-1)	760-1 506 (500-1)
CIRCLING	820-1 504 (600-1)	840-1 524 (600-1)	840-1 1/2 524 (600-1 1/2)	880-2 564 (600-2)	1080-2 3/4 764 (800-2 3/4)

MERIDIAN, MISSISSIPPI

32°33'N - 88°33'W

MERIDIAN NAS (MC CAIN FLD) (KNMM)

Amdt 4 08SEP22

RNAV (GPS) RWY 1L

SC-4, 20 MAR 2025 to 17 APR 2025

SC-4, 20 MAR 2025 to 17 APR 2025

HIRL all Rwys
Wave-Off Lights Rwy 1L, 19L