

RNAV (GPS) RWY 32R

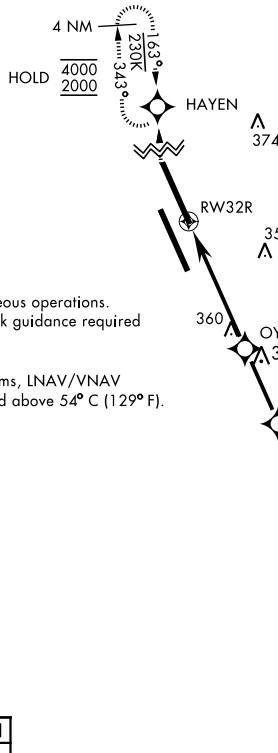
WAAS Chan 60335 W32B	APCH CRS 322°	Rwy Idg 13,502 TDZE 221 Arprt Elev 228
--	-------------------------	---

[USN]

LEMOORE NAS (REEVES FIELD) (KNLC)

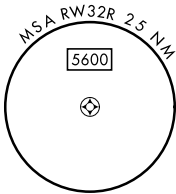
DME/DME RNP-0.3 NA		MISSED APPROACH: Climb to 1200, then climbing right turn to 2000 direct HAYEN and hold.			
--------------------	--	---	--	--	--

ATIS ★ 121.575 327.15	APP CON 124.1 269.025 (N) 118.15 269.025 (S)	TOWER ★ 128.3 360.2	GND CON 121.65 305.2	CLNC DEL 124.1 371.9	ASR/PAR
---------------------------------	--	-------------------------------	--------------------------------	--------------------------------	---------



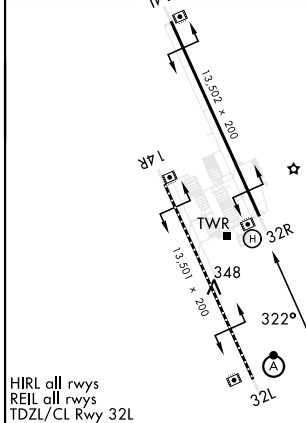
Simultaneous approaches authorized.
LNAV procedure NA during simultaneous operations.
Use of FD or AP providing RNAV track guidance required during simultaneous operations.

For uncompensated Baro-VNAV systems, LNAV/VNAV procedure NA below -15°C (5° F) and above 54° C (129° F).

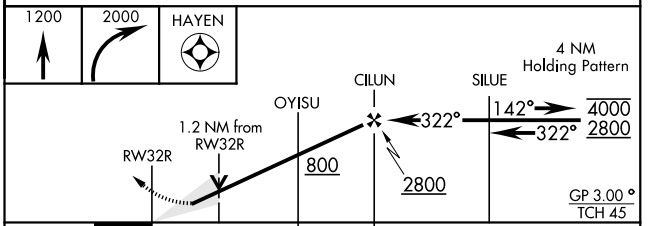


EMER SAFE ALT 100 NM 16,500

ELEV 228	TDZE 221
----------	----------



HIRL all rwys
REIL all rwys
TDZL/CL Rwy 32L



CATEGORY	A	B	C	D
LPV DA	421- ³ / ₄		200 (200- ³ / ₄)	
LNAV/VNAV DA	511- ⁷ / ₈ 290 (300- ⁷ / ₈)	522- ⁷ / ₈ 301 (300- ⁷ / ₈)	532- ⁷ / ₈ 309 (400- ⁷ / ₈)	541- ⁷ / ₈ 320 (400- ⁷ / ₈)
LNAV MDA	660-1	439 (500-1)	660-1 ¹ / ₄	439 (500-1 ¹ / ₄)
CIRCLING	680-1	452 (500-1)	700-1 ¹ / ₂ 472 (500-1 ¹ / ₂)	780-2 552 (600-2)

RNAV (GPS) RWY 32R

SW-2, 20 MAR 2025 to 17 APR 2025

SW-2, 20 MAR 2025 to 17 APR 2025