

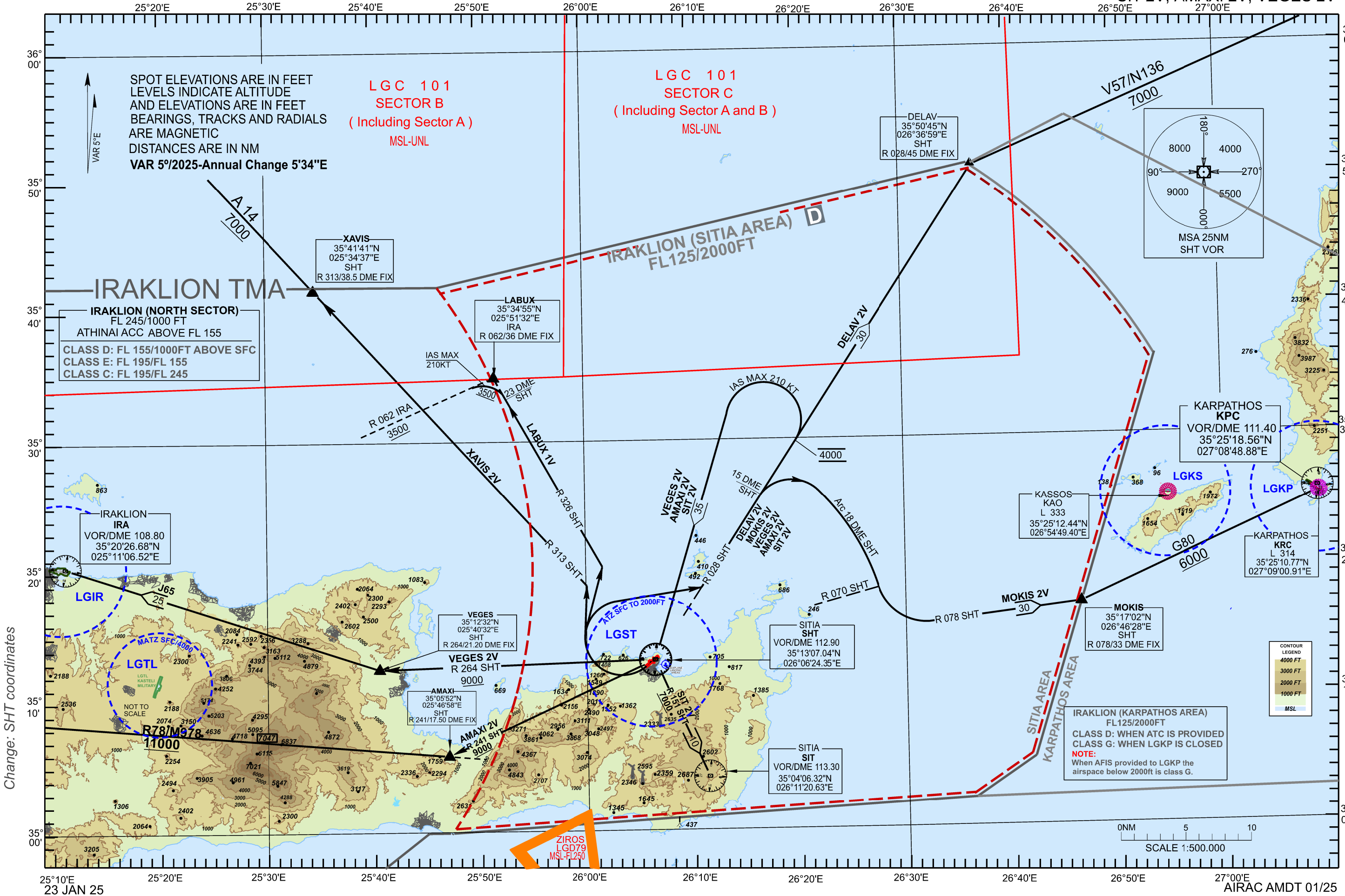
STANDARD DEPARTURE CHART -
INSTRUMENT (SID) - ICAO

SITIA / VITSENTZOS KORNAROS
RWY 23

XAVIS 2V, LABUX 1V, DELAV 2V, MOKIS 2V
SIT 2V, AMAXI 2V, VEGES 2V

Transition Altitude 6000ft

IRAKLION APP 123.975
SITIA INFORMATION 122.600



SITIA AERODROME
SIDs RWY 23
SHT VOR/DME

XAVIS 2V, LABUX 1V, DELAV 2V, MOKIS 2V, SIT 2V, AMAXI 2V, VEGES 2V.

GENERAL

1. When for these SIDs an altitude higher than the transition altitude is designated, then ATC unit shall specify an equivalent flight level.
2. Due to high terrain South – South West of Aerodrome a visual departure is required. To execute a visual departure, the aircraft take off performance characteristics shall allow them to make an early right turn after take off. When implemented, visual departure shall be applied under the following conditions:

a. The meteorological conditions in the direction of take off and the following climb-out shall not impair the procedure

I. Up to 3500ft of altitude.

II. Until to intercept and follow R 028 SHT for SIDs DELAV 2V, MOKIS 2V, SIT 2V, VEGES 2V, AMAXI 2V or R 313 SHT for SID XAVIS 2V or R 326 SHT for SID LABUX1V.

b. The procedure shall be applied during the daytime.

c. The pilot shall be responsible for maintaining obstacle clearance

I. Until the altitude of 3500ft.

II. Until to intercept and follow R 028 SHT.
- Caution spots heights in the following table:
- | | BEARING / DISTANCE
from SHT VOR/DME | SPOT ELEVATION
(Feet / Meters AMSL) | COORDINATES
in WGS-84 |
|----|--|--|---|
| 1 | 274 ⁰ / 2.50 NM | 626 / 191 | 35 ⁰ 13' 28.51'' N, 026 ⁰ 03' 22.64'' E |
| 2 | 264 ⁰ / 3.24 NM | 882 / 269 | 35 ⁰ 13' 01.47'' N, 026 ⁰ 02' 26.97'' E |
| 3 | 263 ⁰ / 3.30 NM | 922 / 281 | 35 ⁰ 12' 56.42'' N, 026 ⁰ 02' 23.55'' E |
| 4 | 262 ⁰ / 4.52 NM | 1407 / 429 | 35 ⁰ 12' 47.77'' N, 026 ⁰ 00' 53.64'' E |
| 5 | 252 ⁰ / 2.49 NM | 564 / 172 | 35 ⁰ 12' 31.59'' N, 026 ⁰ 03' 27.30'' E |
| 6 | 251 ⁰ / 4.12 NM | 1266 / 386 | 35 ⁰ 12' 02.37'' N, 026 ⁰ 01' 34.20'' E |
| 7 | 251 ⁰ / 4.95 NM | 1483 / 452 | 35 ⁰ 11' 48.37'' N, 026 ⁰ 00' 33.24'' E |
| 8 | 249 ⁰ / 4.80 NM | 1548 / 472 | 35 ⁰ 11' 40.33'' N, 026 ⁰ 00' 48.90'' E |
| 9 | 248 ⁰ / 4.38 NM | 1456 / 444 | 35 ⁰ 11' 43.13'' N, 026 ⁰ 01' 18.08'' E |
| 10 | 244 ⁰ / 4.87 NM | 1827 / 557 | 35 ⁰ 11' 20.20'' N, 026 ⁰ 00' 52.48'' E |
| 11 | 242 ⁰ / 5.30 NM | 2014/614 (3 Antennas) | 35 ⁰ 10' 57.29'' N, 026 ⁰ 00' 30.05'' E |
| 12 | 233 ⁰ / 3.28 NM | 800 / 244 | 35 ⁰ 11' 18.42'' N, 026 ⁰ 03' 03.43'' E |
| 13 | 229 ⁰ / 4.46 NM | 954 / 291 | 35 ⁰ 10' 23.27'' N, 026 ⁰ 02' 03.95'' E |
| 14 | 231 ⁰ / 5.83 NM | 2011 / 613 | 35 ⁰ 09' 43.47'' N, 026 ⁰ 00' 36.60'' E |
| 15 | 222 ⁰ / 6.47 NM | 2227 / 679 | 35 ⁰ 08' 32.93'' N, 026 ⁰ 00' 44.57'' E |
- d. Separation shall be provided between an aircraft cleared to execute a visual departure and other departing and arriving aircraft.
- XAVIS 2V
- After take off turn right as soon as practicable. Intercept and follow R 313 SHT to XAVIS. Arrange to pass XAVIS at 7000ft or above.
- LABUX 1V
- After take off turn right as soon as practicable. Intercept and follow R 326 SHT. And proceed to LABUX. Arrange to reach 3500ft or above by R 326 SHT/23 DME Fix. (See Note).
- Note: This SID should be used for destination IRAKLION Airport (LGIR) and is connected with STAR LABUX 2L for RWY 09 and STARs LABUX 1A and LABUX 1B for RWY 27 of IRAKLION Airport.
- DELAV 2V
- After take off turn right as soon as practicable. Intercept and follow R 028 SHT to DELAV. Arrange to pass DELAV at 7000ft or above to join AWY V57/N136.
- MOKIS 2V
- After take off turn right as soon as practicable. Intercept and follow R 028 SHT. At R 028 SHT/15 DME Fix turn right, intercept and follow ARC18 DME SHT. Crossing R 070 SHT turn left, intercept and follow R 078 SHT to MOKIS. Arrange to pass MOKIS at 6000ft or above to join AWY G80.
- SIT 2V
- After take off turn right as soon as practicable. Intercept and follow R 028 SHT. Climb on R 028 SHT to 4000ft, turn left, and proceed to SHT VOR/DME at 7000ft or above, then turn left intercept and follow R 151 SHT to SIT VOR/DME.
- AMAXI 2V
- After take off turn right as soon as practicable. Intercept and follow R 028 SHT. Climb on R 028 SHT to 4000ft, turn left, and proceed to SHT VOR/DME at 9000ft or above, then turn right intercept and follow R 241 SHT to AMAXI. Arrange to pass AMAXI at 11000ft or above to join AWY R78/M978.
- VEGES 2V
- After take off turn right as soon as practicable. Intercept and follow R 028 SHT. Climb on R 02 SHT to 4000ft, turn left, and proceed to SHT VOR/DME at 9000ft or above, then turn right intercept and follow RADIAL 264 SHT to VEGES to join AWY J65 to IRA.
- 23 JAN 25

AIRAC AMDT 01/25