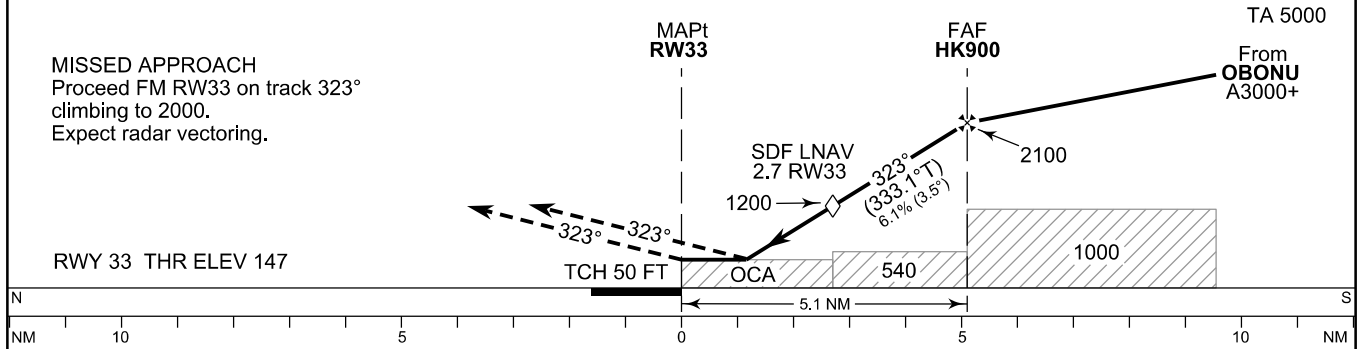
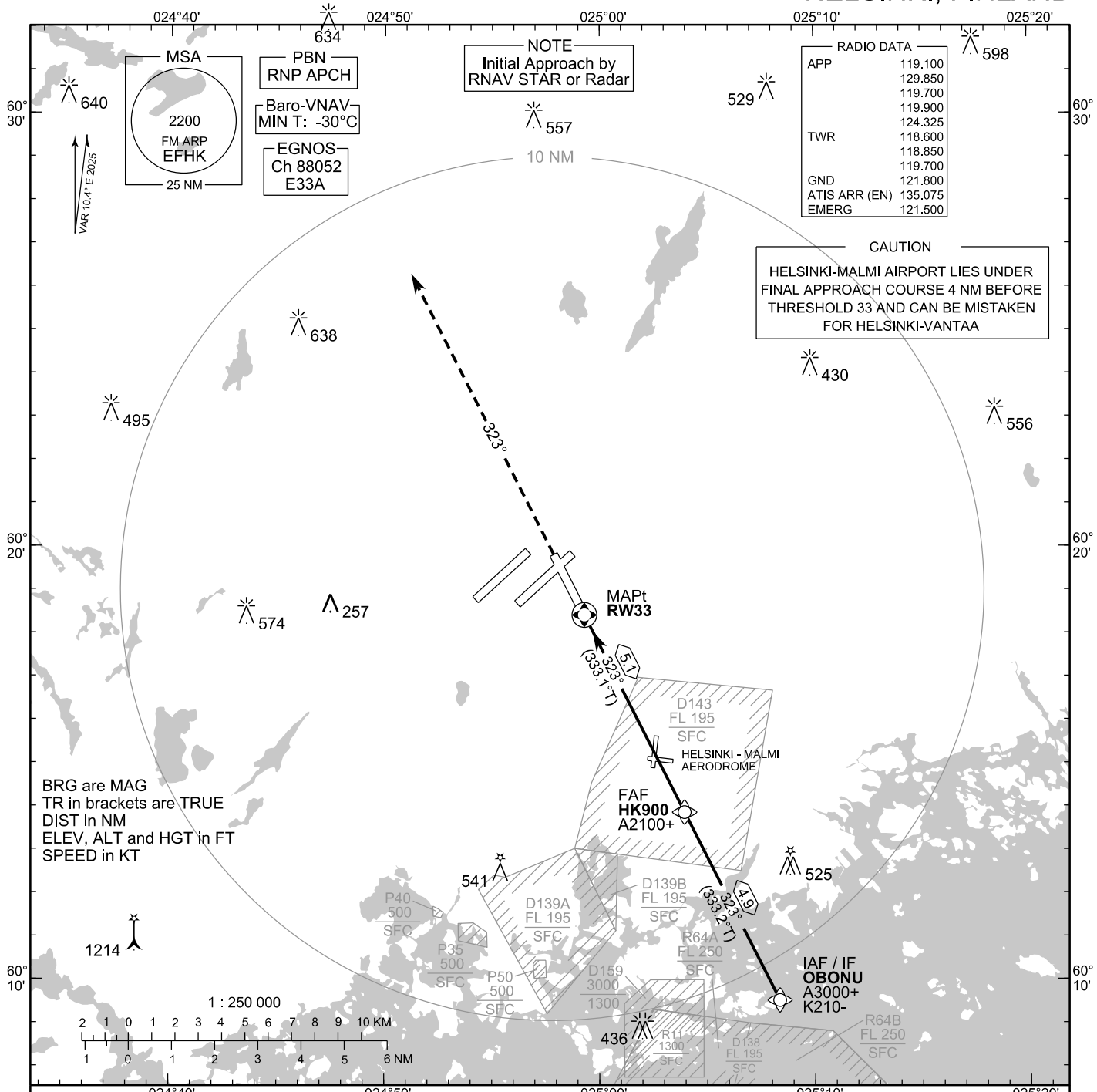


INSTRUMENT
APPROACH CHART - ICAO

ELEV 180 FT
HEIGHTS RELATED TO
THR RWY 33 ELEV 147 FT

RNP RWY 33
HELSINKI-VANTAA AERODROME
HELSINKI, FINLAND

CHG: MAG VAR, OCA (H), Baro-VNAV MIN T, ADDN SBAS CAT I, MOCA



	OCA (H)	A	B	C	D
LPV		309 (162)	320 (173)	333 (186)	349 (202)
LNAV/VNAV		466 (319)	481 (334)	493 (346)	503 (356)
LNAV		550 (400)			

	2.0 NM	3.0 NM	4.0 NM	5.0 NM		
DIST FM THR	2.0 NM	3.0 NM	4.0 NM	5.0 NM		
Altitude (Height)	940 (790)	1310 (1170)	1680 (1540)	2060 (1910)		
	kt	90	100	120	140	160
FAF - MAPt 5.1 NM	min:sec	3:25	3:04	2:34	2:12	1:55
Rate of descent	ft/min	560	620	740	870	990

Timing not authorized for defining the MAPt

EFHK RNP RWY 33										
PROC ID NAV SPEC	SEQ NR	P/T	WPT			MAG	GEO TR	DIST NM	Constraints	
			ID	Type	Flyover				LVL	Speed
H33 OBONU RNP APCH	010	IF	OBONU	IAF/IF	-	323°	333.2°T	4.9	A3000+	K210-
	020	TF	HK900	FAF	-				A2100+	
	030	TF	RW33	MAPt	Y	323°	333.1°T	5.1		
	040	CA	-	-	-	323°	333.4°T	-	A2000	

WPT COORD
SEE PAGE EFHK AD 2.15 - 1

FINAL APPROACH PARAMETERS			
LNAV Gradient	Baro-VNAV		TCH
	VPA	MNM T	
6.12 % (3.50°)	3.50°	-30°C	50 FT

SBAS DATA	
Approach ID	E33A
Service Provider	EGNOS
CRC remainder	C5 75 07 F1
Channel number	88052
Data Block	SEE EFHK AD 2.15 - 5