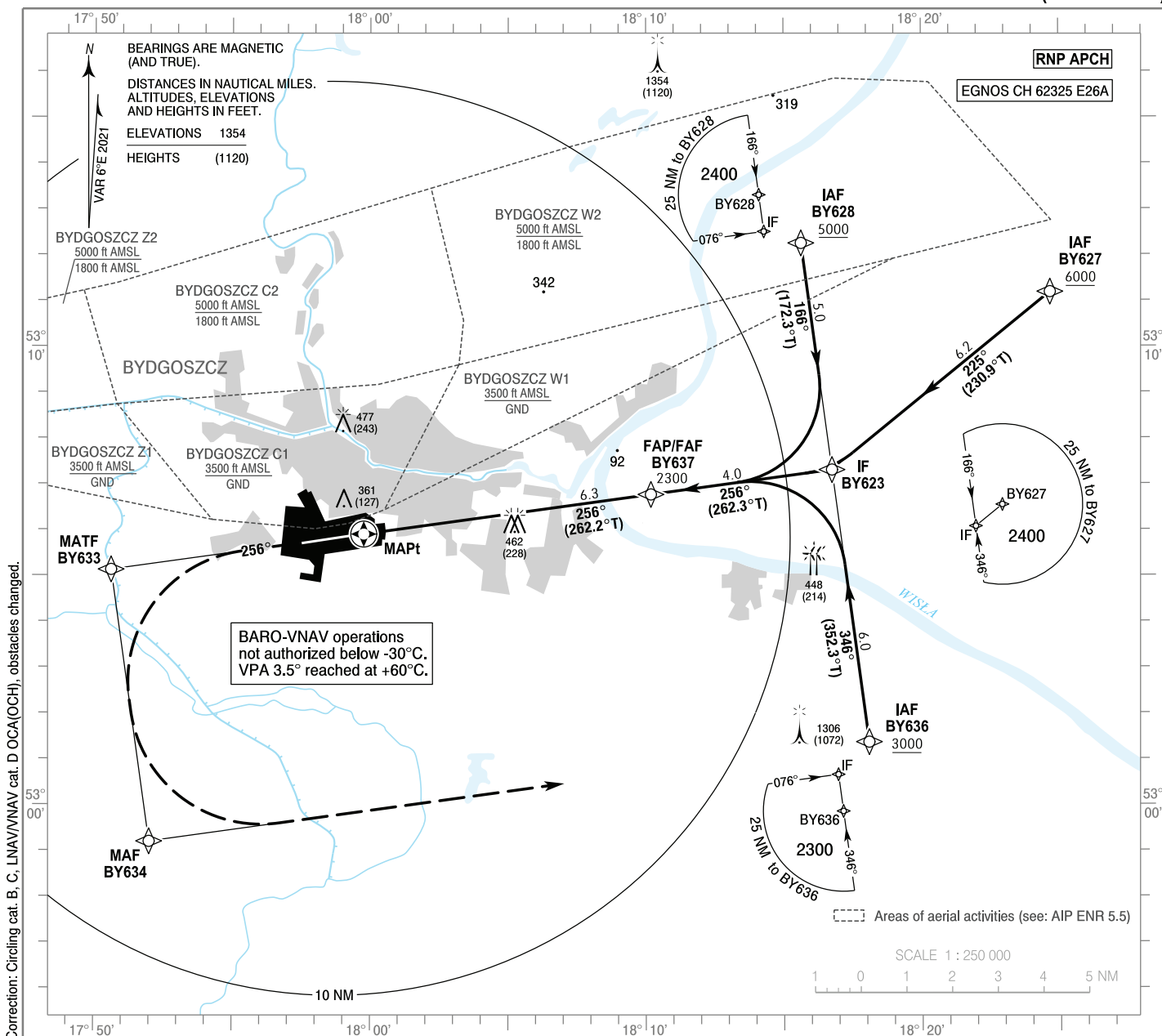


**INSTRUMENT  
APPROACH  
CHART - ICAO**

AERODROME ELEV 237 ft  
THR RWY 26 ELEV 234 ft  
HEIGHTS RELATED TO THR RWY 26

Bydgoszcz TOWER 131.005  
Bydgoszcz INFORMATION 131.005  
ATIS 129.330

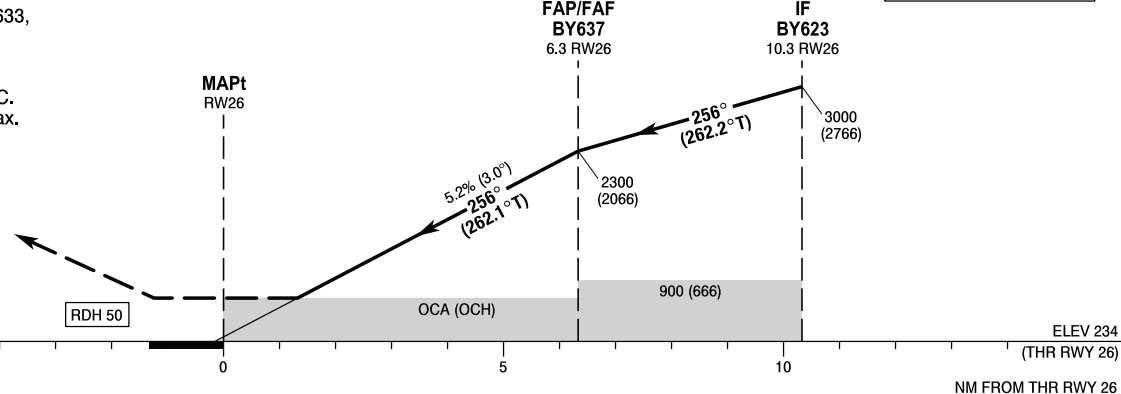
**Bydgoszcz  
RNP  
RWY 26 (CAT A/B/C/D)**



**MISSED APPROACH**

Climb on course 256° to BY633, then turn left to BY634, then turn left to BY636 climbing to 3000 (2766). Further instructions from ATC. Turn limited to 220 kt IAS max.

TRANSITION ALTITUDE 6500



SCALE 1 : 250 000

NM FROM THR RWY 26

OCA (OCH)					Distance FAF - MAPt 6.3 NM								
Cat. of ACFT		A	B	C	D	Speed	kt	80	100	120	140	160	180
		Straight - in	LPV	435 (201)	447 (213)	455 (221)	466 (232)	Time	min : s	4 : 45	3 : 48	3 : 10	2 : 43
LNAV / VNAV	470 (236)		480 (246)	490 (256)	490 (256)	Rate of descent	ft / min	420	530	640	740	850	950
LNAV	710 (476)		710 (476)	710 (476)	710 (476)			Final approach distance/altitude (height)					
Circling (OCH AAL)		720 (483)	780 (543)	880 (643)	930 (693)	Distance		5	4	3	2		
						Altitude (height)		1880 (1646)	1560 (1326)	1240 (1006)	930 (696)		

STRONA WOLNA

INTENTIONALLY LEFT BLANK

**Bydgoszcz  
RNP  
RWY 26 (CAT A/B/C/D)**

**EPBY RNP RWY 26 FROM BY628**

SEQUENCE NUMBER	PATH TERMINATOR	WAYPOINT IDENTIFIER	FLY - OVER	COURSE/TRACK °M (°T)	DISTANCE (NM)	TURN DIRECTION	ALTITUDE	SPEED (kt)	VPA/TCH	NAV SPEC
001	IF	BY628	-	-	-	-	+5000 ft	-	-	RNP APCH
002	TF	BY623	-	166 (172.28)	5.00	R	+3000 ft	-210	-	RNP APCH
003	TF	BY637	-	256 (262.29)	3.99	-	+2300 ft	-	-	RNP APCH
004	TF	RW26	Y	256 (262.19)	6.34	-	@284 ft	-	-3.00°/50	RNP APCH
005	CF	BY633	-	256 (262.06)	5.57	L	-	-220	-	RNP APCH
006	TF	BY634	-	166 (171.94)	6.00	L	-	-220	-	RNP APCH
007	TF	BY636	-	076 (081.95)	15.90	-	+3000 ft	-220	-	RNP APCH

**EPBY RNP RWY 26 FROM BY627**

SEQUENCE NUMBER	PATH TERMINATOR	WAYPOINT IDENTIFIER	FLY - OVER	COURSE/TRACK °M (°T)	DISTANCE (NM)	TURN DIRECTION	ALTITUDE	SPEED (kt)	VPA/TCH	NAV SPEC
001	IF	BY627	-	-	-	-	+6000 ft	-	-	RNP APCH
002	TF	BY623	-	225 (230.92)	6.15	R	+3000 ft	-210	-	RNP APCH
003	TF	BY637	-	256 (262.29)	3.99	-	+2300 ft	-	-	RNP APCH
004	TF	RW26	Y	256 (262.19)	6.34	-	@284 ft	-	-3.00°/50	RNP APCH
005	CF	BY633	-	256 (262.06)	5.57	L	-	-220	-	RNP APCH
006	TF	BY634	-	166 (171.94)	6.00	L	-	-220	-	RNP APCH
007	TF	BY636	-	076 (081.95)	15.90	-	+3000 ft	-220	-	RNP APCH

**EPBY RNP RWY 26 FROM BY636**

SEQUENCE NUMBER	PATH TERMINATOR	WAYPOINT IDENTIFIER	FLY - OVER	COURSE/TRACK °M (°T)	DISTANCE (NM)	TURN DIRECTION	ALTITUDE	SPEED (kt)	VPA/TCH	NAV SPEC
001	IF	BY636	-	-	-	-	+3000 ft	-	-	RNP APCH
002	TF	BY623	-	346 (352.31)	6.00	L	+3000 ft	-210	-	RNP APCH
003	TF	BY637	-	256 (262.29)	3.99	-	+2300 ft	-	-	RNP APCH
004	TF	RW26	Y	256 (262.19)	6.34	-	@284 ft	-	-3.00°/50	RNP APCH
005	CF	BY633	-	256 (262.06)	5.57	L	-	-220	-	RNP APCH
006	TF	BY634	-	166 (171.94)	6.00	L	-	-220	-	RNP APCH
007	TF	BY636	-	076 (081.95)	15.90	-	+3000 ft	-220	-	RNP APCH

WAYPOINT IDENTIFIER	COORDINATES	
RW26 (MAPt)	53 05 54.1 N	017 59 46.2 E
BY623 (IF)	53 07 18.4 N	018 16 45.0 E
BY627 (IAF)	53 11 11.1 N	018 24 40.7 E
BY628 (IAF)	53 12 15.2 N	018 15 38.1 E
BY633 (MATF)	53 05 07.6 N	017 50 36.9 E
BY634 (MAF)	52 59 11.7 N	017 52 00.4 E
BY636 (IAF)	53 01 22.2 N	018 18 05.0 E
BY637 (FAF/P)	53 06 46.1 N	018 10 10.9 E



## SBAS FAS Data Block Coding Data

EPBY RNP RWY 26	
Input Data	
Parameters	Values
Operation Type:	0
SBAS Provider:	1 (EGNOS)
Airport Identifier:	EPBY
Runway:	26
Runway Direction:	0 (None)
Approach Performance Designator:	0
Route Indicator:	
Reference Path Data Selector:	0
Reference Path Identifier:	E26A
LTP/FTP Latitude:	530554.0900N
LTP/FTP Longitude:	0175946.1500E
LTP/FTP Ellipsoidal Height (metres):	102.1
FPAP Latitude:	530542.3555N
Delta FPAP Latitude (seconds):	-11.7345
FPAP Longitude:	0175726.7330E
Delta FPAP Longitude (seconds):	-139.4170
Threshold Crossing Height:	50.0
TCH Units Selector:	0 (feet)
Glidepath Angle (degrees):	3.00
Course Width (metres):	105.00
Length Offset (metres):	120
HAL (metres):	40.0
VAL (metres):	35.0

Output Data	
Data Block	10 19 02 10 05 1A 00 00 01 36 32 05 54 8F C9 16 CC 1D B9 07 FD 17 53 A4 FF CE BE FB F4 01 2C 01 64 0F C8 AF E7 5A D0 D6
Calculated CRC Value	E75AD0D6

Required Additional Data (not CRC wrapped)	
ICAO Code	BY
LTP/FTP Orthometric Height (metres)	71.4