

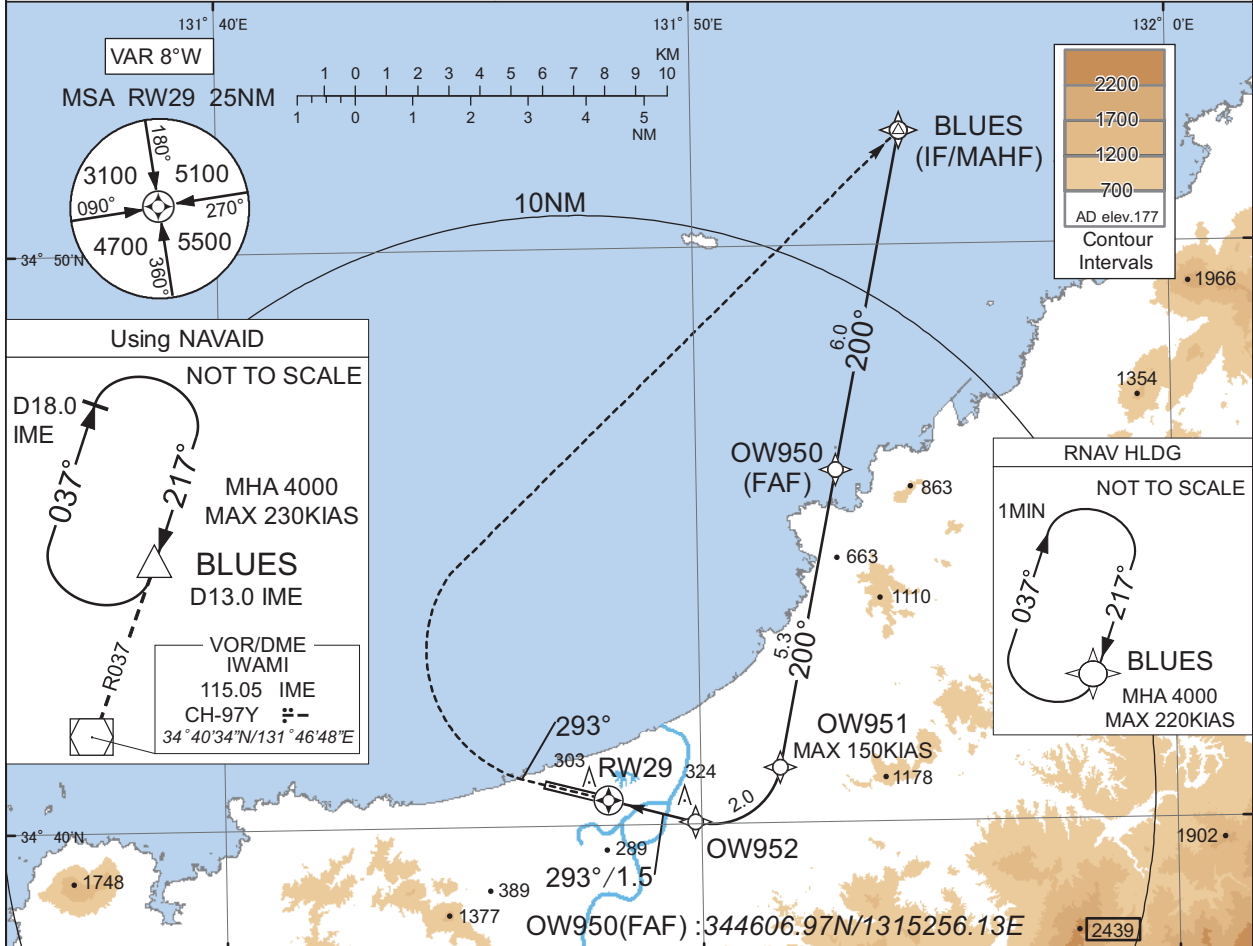
INSTRUMENT APPROACH CHART

RJOW / IWAMI

RNP RWY29(AR)

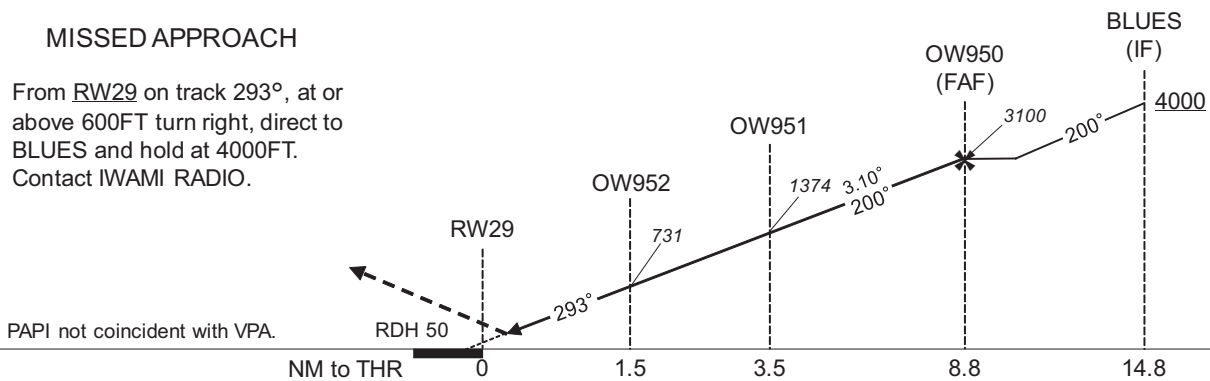
KOBE CONTROL 132.5 - 246.1 134.25 - 315.5	RNP AR RF required.	IWAMI RADIO 122.2 AFIS provided by Osaka Airport Office	NO RADAR
---	------------------------	--	----------

For uncompensated Baro-VNAV systems, procedure not authorized below -5°C / above 39°C



MISSED APPROACH

From RW29 on track 293°, at or above 600FT turn right, direct to BLUES and hold at 4000FT. Contact IWAMI RADIO.



Missed APCH climb gradient MNM 4.0%

MINIMA	THR elev. 171		AD elev. 177	
	RNP 0.16		RNP 0.30	
CAT	DA(H)	CMV	DA(H)	CMV
A	-	-	-	-
B	-	-	-	-
C	471(300)	1400	489(318)	1400
D	-	-	-	-

MINIMA with Missed APCH climb gradient of 2.5% are not established.

Authorization Required

CHANGE : HLDG course for using NAVAID.

INSTRUMENT APPROACH CHART

RJOW / IWAMI

RNP RWY29(AR)

Coding Table

Serial Number	Path Descriptor	Waypoint Identifier	Fly Over	Course °M(°T)	Magnetic Variation	Distance (NM)	Turn Direction	Altitude (FT)	Speed (KIAS)	VPA/ RDH (°/FT)	RNP Value
001	IF	BLUES	-	-	-8.2	-	-	+4000	-	-	1.0
002	TF	OW950	-	200 (191.5)	-8.2	6.0	-	3100	-	-	1.0
003	TF	OW951	-	200 (191.5)	-8.2	5.3	-	1374	-150	-3.10	0.16 0.30
004	RF Center: OWRF2 r=1.20NM	OW952	-	-	-8.2	2.0	R	731	-	-3.10	0.16 0.30
005	TF	RW29	Y	293 (284.9)	-8.2	1.5	-	221	-	-3.10/50	0.16 0.30
006	FA	-	-	293 (284.9)	-8.2	-	-	+600	-	-	1.0
007	DF	BLUES	-	-	-8.2	-	R	4000	-	-	1.0

Path	Waypoint Identifier	Inbound Course °M(°T)	Magnetic Variation	Outbound Time (MIN)	Turn Direction	Minimum Altitude (FT)	Maximum Altitude (FT)	Speed (KIAS)	RNP Value
Hold	BLUES	217 (208.7)	-8.2	1.0 (-13000)	R	4000	13000	-220 (-13000)	1.0

Waypoint Coordinates

Waypoint Identifier	Coordinates	RF Arc Center Identifier	Coordinates
BLUES	345159.02N / 1315423.09E	OWRF2	344112.62N / 1315014.52E
OW950	344606.97N / 1315256.13E		
OW951	344058.27N / 1315140.08E		
OW952	344002.90N / 1314952.21E		
RW29	344026.72N / 1314803.07E		

CHANGE : VAR. PROC course. RNAV HLDG established.