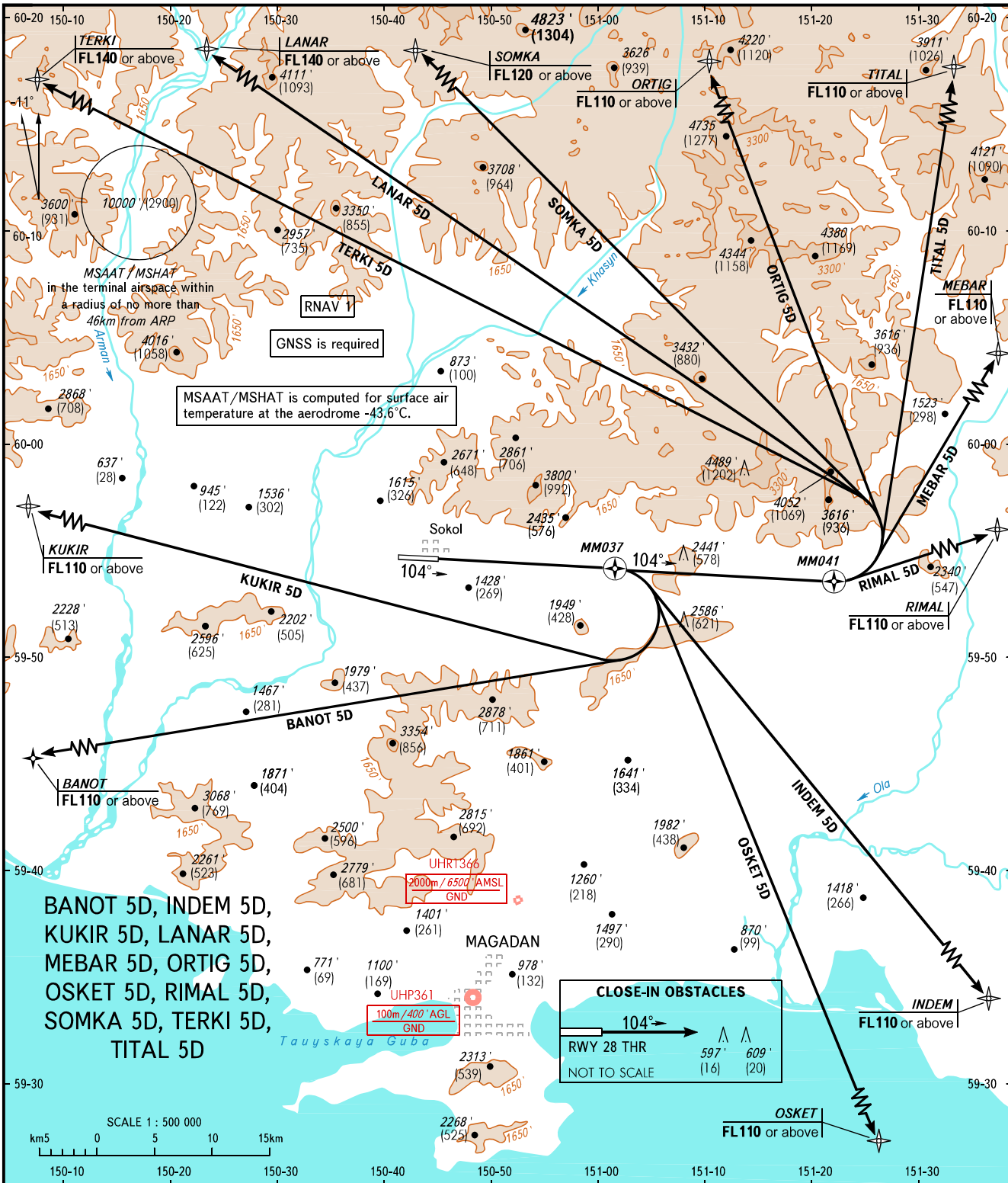


STANDARD DEPARTURE CHART
INSTRUMENT (SID) - ICAO

TRANSITION ALT: 10000'
TRANSITION HGT: (2900)

MAGADAN, RUSSIA
SOKOL
RNAV RWY 10



BANOT 5D, INDEM 5D,
KUKIR 5D, LANAR 5D,
MEBAR 5D, ORTIG 5D,
OSKET 5D, RIMAL 5D,
SOMKA 5D, TERKI 5D,
TITAL 5D

TOWER 120.800
APPROACH 119.300

MINIMUM CLIMB GRADIENTS:

- BANOT 5D 4.7% up to 3600'/(935) due to obstacles;
- INDEM 5D 4.5% up to 3700'/(965) due to obstacles, then 4.1% up to 7000'/(1970) due to airspace structure;
- KUKIR 5D 5.4% up to 3900'/(1025) due to obstacles;
- LANAR 5D, SOMKA 5D, TERKI 5D 4.5% up to 6300'/(1755) due to obstacles;
- MEBAR 5D 4.4% up to 3600'/(935) due to obstacles;
- ORTIG 5D, TITAL 5D 4.5% up to 5800'/(1605) due to obstacles;
- OSKET 5D 4.7% up to 3400'/(870) due to obstacles, then 4.6% up to 7000'/(1970) due to airspace structure;
- RIMAL 5D 4.4% up to 3400'/(870) due to obstacles, then 3.9% up to 7000'/(1970) due to airspace structure;

BEARINGS AND TRACKS ARE MAGNETIC
ALTITUDES IN FEET
HEIGHTS IN METRES
ELEVATIONS IN FEET AND METRES
DISTANCES IN KILOMETRES

Alt set: -QNH(QFE on req);
-hPa(mm on req).

CHANGE: Minimum climb gradients