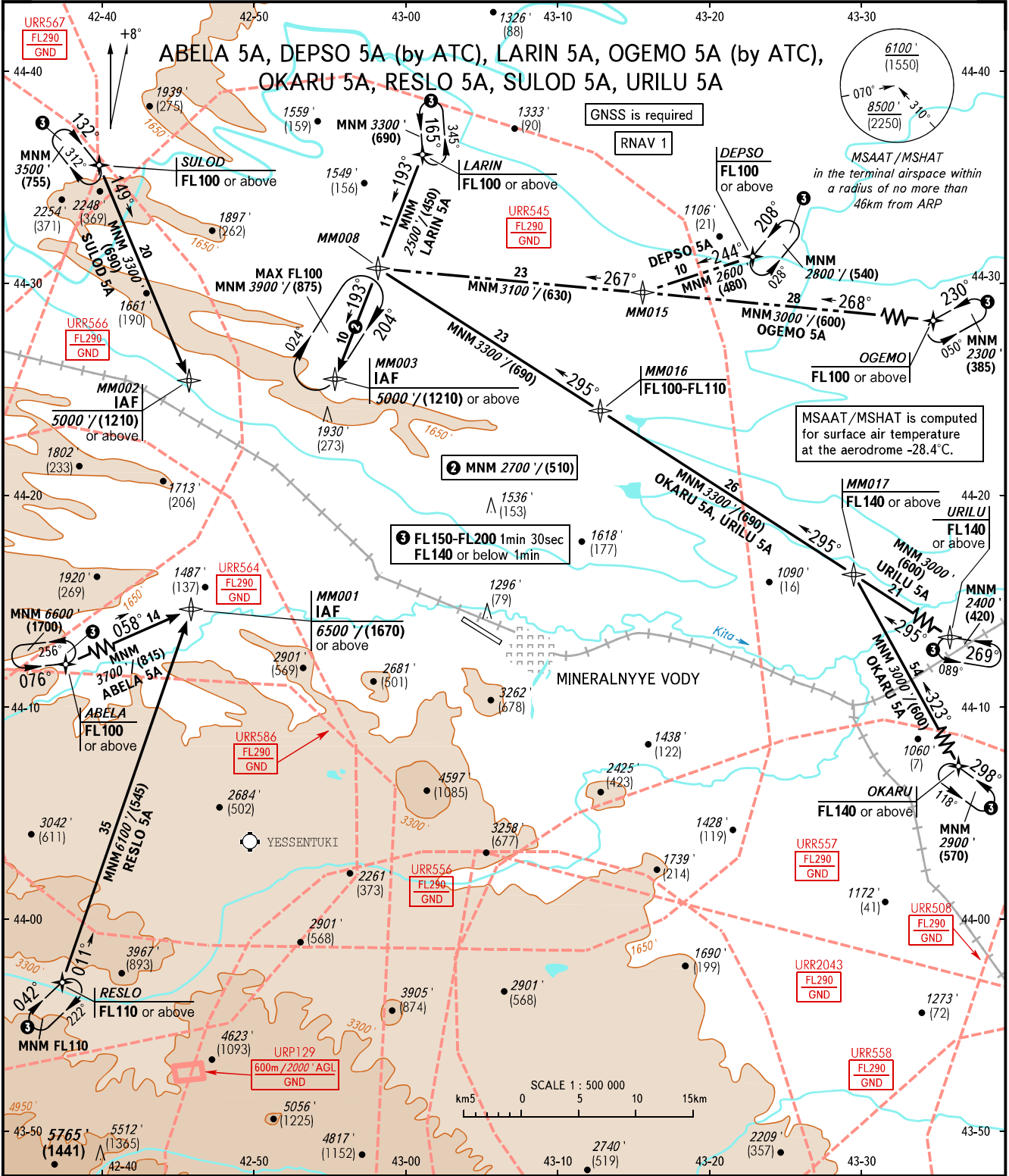


STANDARD ARRIVAL CHART
INSTRUMENT (STAR) - ICAO

TRANSITION
LEVEL: 1

MINERALNYYE VODY, RUSSIA
MINERALNYYE VODY
RNAV RWY 11



APPROACH	119.300
RADAR	120.700
START	128.000

NOTE
 ABELA 5A is not AVBL, when URR545, URR564, URR566 are active.
 DEPSO 5A, LARIN 5A, OGEMO 5A, URILU 5A are not AVBL, when URR545 is active.
 OKARU 5A is not AVBL, when URR545, URR557, URR2043, URR558, URR508 are active.
 RESLO 5A is not AVBL, when URR545, URR564, URR586 are active.
 SULOD 5A is not AVBL, when URR545, URR566, URR567 are active.

BEARINGS AND TRACKS ARE MAGNETIC
 ELEVATIONS IN FEET AND METRES
 ALTITUDES IN FEET
 HEIGHTS IN METRES
 DISTANCES IN KILOMETRES

Alt set: -QNH(QFE on req);
 -hPa(mm on req).

1 TRANSITION LEVEL:
 - FL100 when QNH is 1013 hPa (760mm mercury column) or above;
 - FL110 when QNH is 977 hPa (733mm mercury column) or above,
 but less than 1013 hPa (760mm mercury column);
 - FL120 when QNH is less than 977 hPa (733mm mercury column).

CHANGE: MM008-MM003