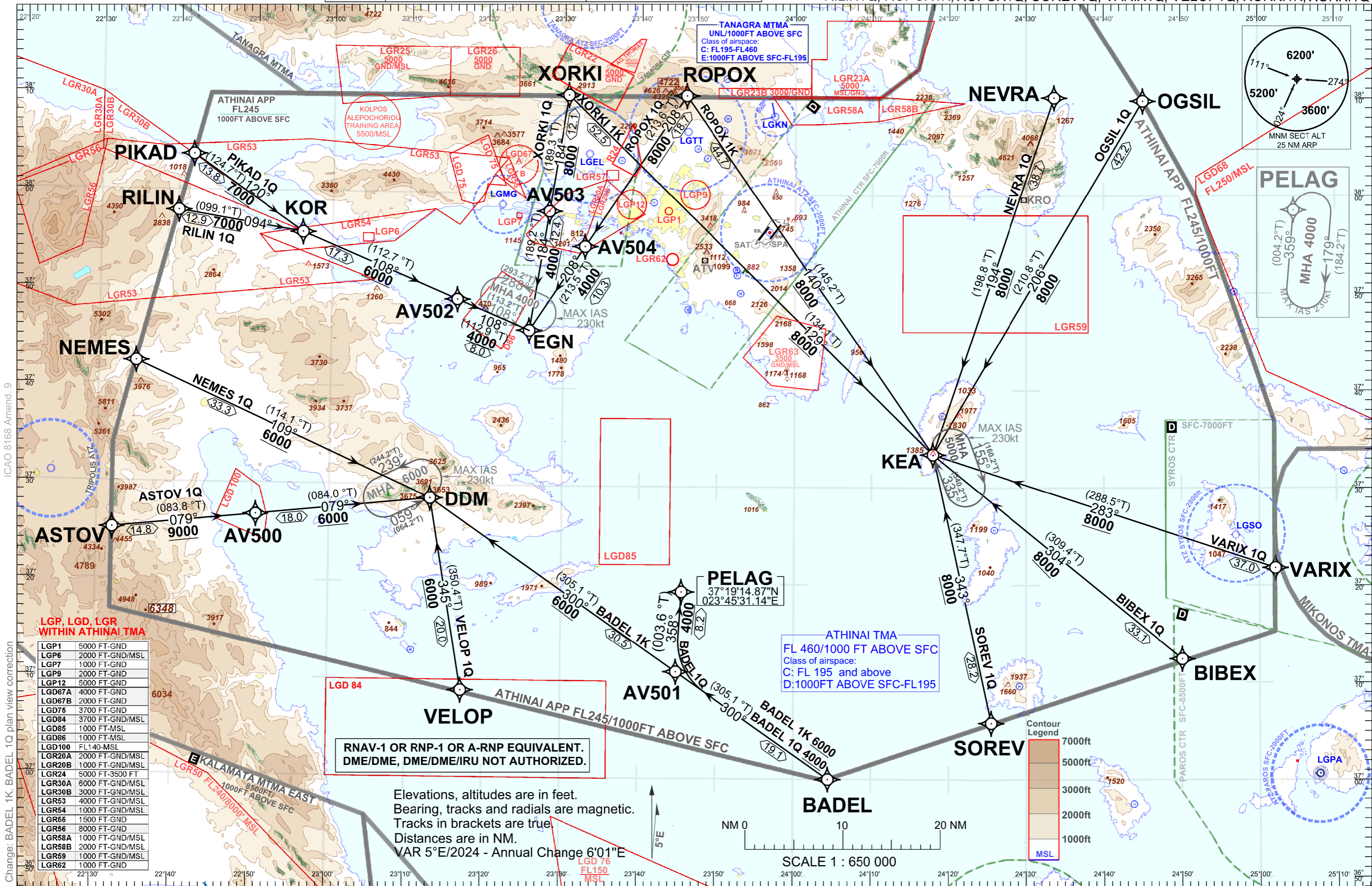


ATIS	ARRIVAL WEST	132.975	TOWER WEST	136.275
136.125	ARRIVAL EAST	126.575	TOWER EAST	118.625

ASTOV1Q, BADEL1K, BADEL1Q, BIBEX1Q, NEMES1Q, NEVRA1Q, OGSIL1Q, PIKAD1Q, RILIN1Q, ROPOX1K, ROPOX1Q, SOREV1Q, VARIX1Q, VELOP1Q, XORKI1K, XORKI1Q



ICAO 8168 Amend. 9

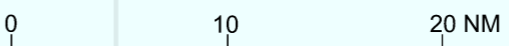
Change: BADEL 1K, BADEL 1Q plan view correction

LGP, LGD, LGR WITHIN ATHINAI TMA

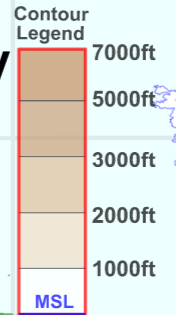
LGP1	5000 FT-GND
LGP6	2000 FT-GND/MSL
LGP7	1000 FT-GND
LGP9	2000 FT-GND
LGP12	5000 FT-GND
LG67A	4000 FT-GND
LG67B	2000 FT-GND
LG75	3700 FT-GND
LG84	3700 FT-GND/MSL
LG85	1000 FT-MSL
LG86	1000 FT-MSL
LG100	FL140-MSL
LGR20A	2000 FT-GND/MSL
LGR20B	1000 FT-GND/MSL
LGR24	5000 FT-3500 FT
LGR30A	6000 FT-GND/MSL
LGR30B	3000 FT-GND/MSL
LGR53	4000 FT-GND/MSL
LGR54	1000 FT-GND/MSL
LGR55	1500 FT-GND
LGR56	8000 FT-GND
LGR58A	1000 FT-GND/MSL
LGR58B	2000 FT-GND/MSL
LGR59	1000 FT-GND/MSL
LGR62	1000 FT-GND

RNAV-1 OR RNP-1 OR A-RNP EQUIVALENT.
DME/DME, DME/DME/IRU NOT AUTHORIZED.

Elevations, altitudes are in feet.
Bearing, tracks and radials are magnetic.
Tracks in brackets are true.
Distances are in NM.
VAR 5°E/2024 - Annual Change 6'01"E



SCALE 1 : 650 000



ASTOV 1Q											
Sequence Number	Waypoint Identifier	Coordinates	Path Terminator	Fly Over	Distance (NM)	Course °M (°T)	Turn Direction	Altitude (FT/FL)	Speed Limit (kt)	Navigation Specification	RNP
010	ASTOV	N 37°25'15.0000" E 022°32'04.0000"	IF	-	-	-	-	+9000	-	RNAV 1	1.0
020	AV500	N 37°26'49.0707" E 022°50'32.4157"	TF	-	14.8	079 (083.8)	-	+9000	-	RNAV 1	1.0
030	DDM	N 37°28'39.6100" E 023°13'01.8100"	TF	-	18.0	079 (084.0)	-	+6000	-	RNAV 1	1.0
BADEL 1K											
Sequence Number	Waypoint Identifier	Coordinates	Path Terminator	Fly Over	Distance (NM)	Course °M (°T)	Turn Direction	Altitude (FT/FL)	Speed Limit (kt)	Navigation Specification	RNP
010	BADEL	N 37°00'02.0000" E 024°04'26.0000"	IF	-	-	-	-	+6000	-	RNAV 1	1.0
020	DDM	N 37°28'39.6100" E 023°13'01.8100"	TF	-	50.0	300 (305.1)	-	+6000	-	RNAV 1	1.0
BADEL 1Q											
Sequence Number	Waypoint Identifier	Coordinates	Path Terminator	Fly Over	Distance (NM)	Course °M (°T)	Turn Direction	Altitude (FT/FL)	Speed Limit (kt)	Navigation Specification	RNP
010	BADEL	N 37°00'02.0000" E 024°04'26.0000"	IF	-	-	-	-	+6000	-	RNAV 1	1.0
020	AV501	N 37°11'01.2015" E 023°44'51.6602"	TF	-	19.1	300 (305.1)	-	+4000	-	RNAV 1	1.0
030	PELAG	N 37°19'15.0000" E 023°45'31.0000"	TF	-	8.2	358 (003.6)	-	+4000	-	RNAV 1	1.0
BIBEX 1Q											
Sequence Number	Waypoint Identifier	Coordinates	Path Terminator	Fly Over	Distance (NM)	Course °M (°T)	Turn Direction	Altitude (FT/FL)	Speed Limit (kt)	Navigation Specification	RNP
010	BIBEX	N 37°12'29.0000" E 024°50'04.0000"	IF	-	-	-	-	+8000	-	RNAV 1	1.0
020	KEA	N 37°33'25.7900" E 024°17'55.3200"	TF	-	33.1	304 (309.4)	-	+8000	-	RNAV 1	1.0
NEMES 1Q											
Sequence Number	Waypoint Identifier	Coordinates	Path Terminator	Fly Over	Distance (NM)	Course °M (°T)	Turn Direction	Altitude (FT/FL)	Speed Limit (kt)	Navigation Specification	RNP
010	NEMES	N 37°42'23.0000" E 022°34'51.0000"	IF	-	-	-	-	+6000	-	RNAV 1	1.0
020	DDM	N 37°28'39.6100" E 023°13'01.8100"	TF	-	33.3	109 (114.1)	-	+6000	-	RNAV 1	1.0
NEVRA 1Q											
Sequence Number	Waypoint Identifier	Coordinates	Path Terminator	Fly Over	Distance (NM)	Course °M (°T)	Turn Direction	Altitude (FT/FL)	Speed Limit (kt)	Navigation Specification	RNP
010	NEVRA	N 38°10'06.0000" E 024°33'37.0000"	IF	-	-	-	-	+8000	-	RNAV 1	1.0
020	KEA	N 37°33'25.7900" E 024°17'55.3200"	TF	-	38.7	194 (198.8)	-	+8000	-	RNAV 1	1.0
OGSIL1Q											
Sequence Number	Waypoint Identifier	Coordinates	Path Terminator	Fly Over	Distance (NM)	Course °M (°T)	Turn Direction	Altitude (FT/FL)	Speed Limit (kt)	Navigation Specification	RNP
010	OGSIL	N 38°09'46.0000" E 024°45'05.0000"	IF	-	-	-	-	+8000	-	RNAV 1	1.0
020	KEA	N 37°33'25.7900" E 024°17'55.3200"	TF	-	42.2	206 (210.8)	-	+8000	-	RNAV 1	1.0

PIKAD 1Q											
Sequence Number	Waypoint Identifier	Coordinates	Path Terminator	Fly Over	Distance (NM)	Course °M (°T)	Turn Direction	Altitude (FT/FL)	Speed Limit (kt)	Navigation Specification	RNP
010	PIKAD	N 38°03'41.0000" E 022°41'52.0000"	IF	-	-	-	-	+7000	-	RNAV 1	1.0
020	KOR	N 37°55'49.4800" E 022°56'09.2400"	TF	-	13.8	120 (124.7)	-	+7000	-	RNAV 1	1.0
030	AV502	N 37°49'06.3653" E 023°16'16.4185"	TF	-	17.3	108 (112.7)	-	+6000	-	RNAV 1	1.0
040	EGN	N 37°45'58.3000" E 023°25'34.8700"	TF	-	8.0	108 (112.9)	-	+4000	-	RNAV 1	1.0
RILIN 1Q											
Sequence Number	Waypoint Identifier	Coordinates	Path Terminator	Fly Over	Distance (NM)	Course °M (°T)	Turn Direction	Altitude (FT/FL)	Speed Limit (kt)	Navigation Specification	RNP
010	RILIN	N 37°57'54.0000" E 022°40'00.0000"	IF	-	-	-	-	+7000	-	RNAV 1	1.0
020	KOR	N 37°55'49.4800" E 022°56'09.2400"	TF	-	12.9	094 (099.1)	-	+7000	-	RNAV 1	1.0
030	AV502	N 37°49'06.3653" E 023°16'16.4185"	TF	-	17.3	108 (112.7)	-	+6000	-	RNAV 1	1.0
040	EGN	N 37°45'58.3000" E 023°25'34.8700"	TF	-	8.0	108 (112.9)	-	+4000	-	RNAV 1	1.0
ROPOX 1K											
Sequence Number	Waypoint Identifier	Coordinates	Path Terminator	Fly Over	Distance (NM)	Course °M (°T)	Turn Direction	Altitude (FT/FL)	Speed Limit (kt)	Navigation Specification	RNP
010	ROPOX	N 38°10'12.0000" E 023°45'50.0000"	IF	-	-	-	-	+8000	-	RNAV 1	1.0
020	KEA	N 37°33'25.7900" E 024°17'55.3200"	TF	-	44.7	140 (145.2)	-	+8000	-	RNAV 1	1.0
ROPOX 1Q											
Sequence Number	Waypoint Identifier	Coordinates	Path Terminator	Fly Over	Distance (NM)	Course °M (°T)	Turn Direction	Altitude (FT/FL)	Speed Limit (kt)	Navigation Specification	RNP
010	ROPOX	N 38°10'12.0000" E 023°45'50.0000"	IF	-	-	-	-	+8000	-	RNAV 1	1.0
020	AV504	N 37°54'35.7188" E 023°32'45.5074"	TF	-	18.7	208 (213.6)	-	+8000	-	RNAV 1	1.0
030	EGN	N 37°45'58.3000" E 023°25'34.8700"	TF	-	10.3	208 (213.5)	-	+4000	-	RNAV 1	1.0
SOREV 1Q											
Sequence Number	Waypoint Identifier	Coordinates	Path Terminator	Fly Over	Distance (NM)	Course °M (°T)	Turn Direction	Altitude (FT/FL)	Speed Limit (kt)	Navigation Specification	RNP
010	SOREV	N 37°05'49.0000" E 024°25'28.0000"	IF	-	-	-	-	+8000	-	RNAV 1	1.0
020	KEA	N 37°33'25.7900" E 024°17'55.3200"	TF	-	28.2	343 (347.7)	-	+8000	-	RNAV 1	1.0
VARIX 1Q											
Sequence Number	Waypoint Identifier	Coordinates	Path Terminator	Fly Over	Distance (NM)	Course °M (°T)	Turn Direction	Altitude (FT/FL)	Speed Limit (kt)	Navigation Specification	RNP
010	VARIX	N 37°21'50.0000" E 025°02'03.0000"	IF	-	-	-	-	+8000	-	RNAV 1	1.0
020	KEA	N 37°33'25.7900" E 024°17'55.3200"	TF	-	37.0	283 (288.5)	-	+8000	-	RNAV 1	1.0

VELOP 1Q											
Sequence Number	Waypoint Identifier	Coordinates	Path Terminator	Fly Over	Distance (NM)	Course °M (°T)	Turn Direction	Altitude (FT/FL)	Speed Limit (kt)	Navigation Specification	RNP
010	VELOP	N 37°08'57.0000" E 023°17'12.0000"	IF	-	-	-	-	+6000	-	RNAV 1	1.0
020	DDM	N 37°28'39.6100" E 023°13'01.8100"	TF	-	20.0	345 (350.4)	-	+6000	-	RNAV 1	1.0

XORKI 1K											
Sequence Number	Waypoint Identifier	Coordinates	Path Terminator	Fly Over	Distance (NM)	Course °M (°T)	Turn Direction	Altitude (FT/FL)	Speed Limit (kt)	Navigation Specification	RNP
010	XORKI	N 38°10'11.0000" E 023°30'33.0000"	IF	-	-	-	-	+8000	-	RNAV 1	1.0
020	KEA	N 37°33'25.7900" E 024°17'55.3200"	TF	-	52.5	129 (134.1)	-	+8000	-	RNAV 1	1.0

XORKI 1Q											
Sequence Number	Waypoint Identifier	Coordinates	Path Terminator	Fly Over	Distance (NM)	Course °M (°T)	Turn Direction	Altitude (FT/FL)	Speed Limit (kt)	Navigation Specification	RNP
010	XORKI	N 38°10'11.0000" E 023°30'33.0000"	IF	-	-	-	-	+8000	-	RNAV 1	1.0
020	AV503	N 37°58'10.7105" E 023°28'04.7629"	TF	-	12.1	184 (189.3)	-	+8000	-	RNAV 1	1.0
030	EGN	N 37°45'58.3000" E 023°25'34.8700"	TF	-	12.4	184 (189.2)	-	+4000	-	RNAV 1	1.0

RNAV HOLDING IDENTIFICATION								
Path Terminator	Holding Fix	Coordinates	Inbound Mag Track (True Track)	Max Speed (KT IAS)	Altitude (ft)/ Flight Level	Time (MIN) / Distance outbound	Turn Direction	Remarks
HM	DDM	N 37°28'39.6100" E 023°13'01.8100"	059° (064.2°T)	230-	+6000	1	L	-
HM	EGN	N 37°45'58.3000" E 023°25'34.8700"	108° (113.2°T)	230-	+4000	1	L	-
HM	KEA	N 37°33'25.7900" E 024°17'55.3200"	335° (340.2°)	230-	+5000	1	R	-
HM	PELAG	N 37°19'15.0000" E 023°45'31.0000"	359° (004.2°T)	230-	+4000	1	R	-

IDENT	Coordinates
ASTOV	N 37°25'15.0000" E 022°32'04.0000"
AV500	N 37°26'49.0707" E 022°50'32.4157"
AV501	N 37°11'01.2015" E 023°44'51.6602"
AV502	N 37°49'06.3653" E 023°16'16.4185"
AV503	N 37°58'10.7105" E 023°28'04.7629"
AV504	N 37°54'35.7188" E 023°32'45.5074"
BADEL	N 37°00'02.0000" E 024°04'26.0000"
BIBEX	N 37°12'29.0000" E 024°50'04.0000"
DDM	N 37°28'39.6100" E 023°13'01.8100"
EGN	N 37°45'58.3000" E 023°25'34.8700"
KEA	N 37°33'25.7900" E 024°17'55.3200"
KOR	N 37°55'49.4800" E 022°56'09.2400"
NEMES	N 37°42'23.0000" E 022°34'51.0000"
NEVRA	N 38°10'06.0000" E 024°33'37.0000"
OGSIL	N 38°09'46.0000" E 024°45'05.0000"
PELAG	N 37°19'15.0000" E 023°45'31.0000"
PIKAD	N 38°03'41.0000" E 022°41'52.0000"
RILIN	N 37°57'54.0000" E 022°40'00.0000"
ROPOX	N 38°10'12.0000" E 023°45'50.0000"
SOREV	N 37°05'49.0000" E 024°25'28.0000"
VARIX	N 37°21'50.0000" E 025°02'03.0000"
VELOP	N 37°08'57.0000" E 023°17'12.0000"
XORKI	N 38°10'11.0000" E 023°30'33.0000"