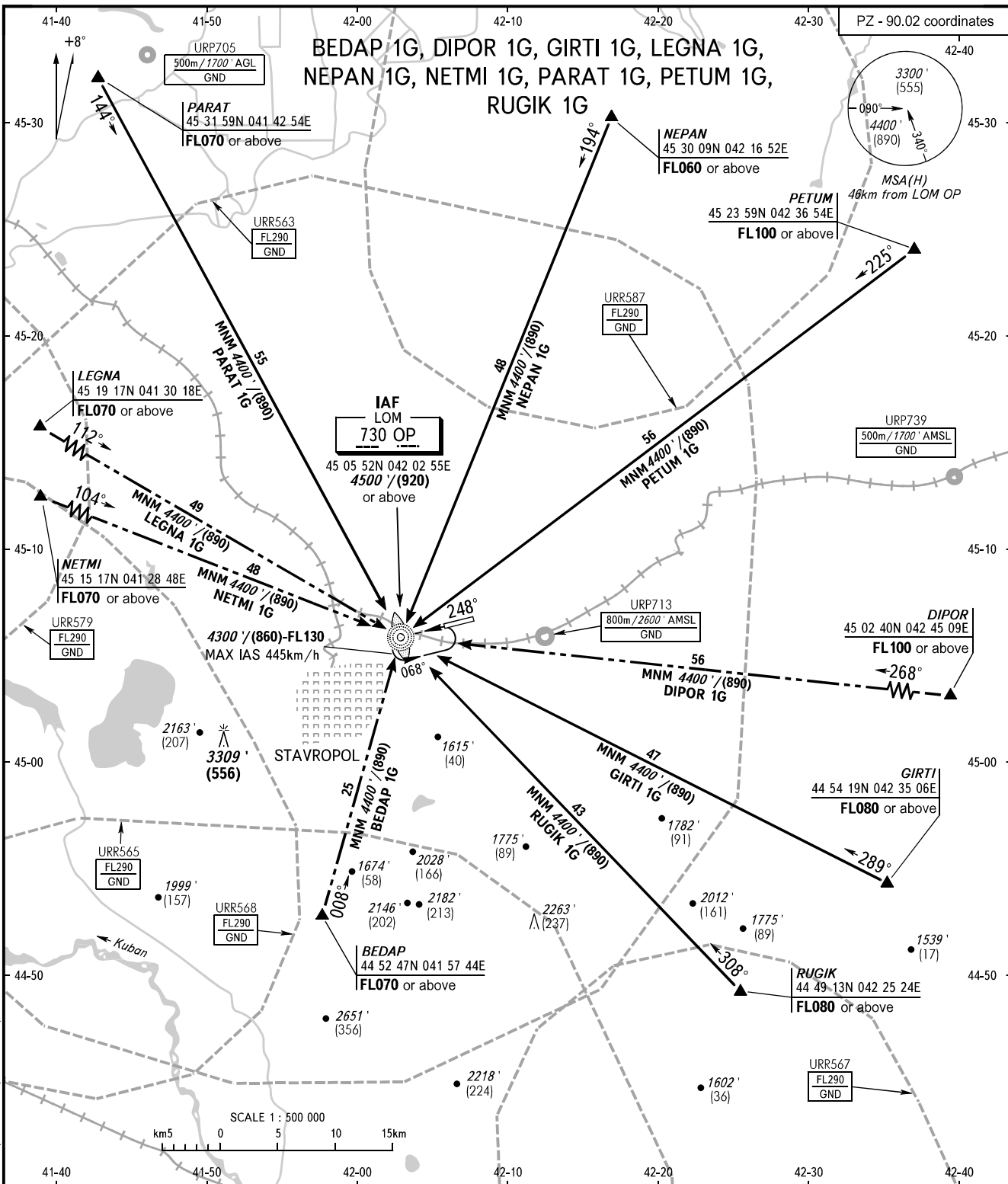


STANDARD ARRIVAL CHART  
INSTRUMENT (STAR) - ICAO

STAVROPOL, RUSSIA  
SHPAKOVSKOYE  
RWY 07

TRANSITION  
LEVEL: **1**



APPROACH TOWER **121.050**  
**120.900**

**1** TRANSITION LEVEL:  
- FL060 when QNH is 1013 hPa (760mm mercury column) or above;  
- FL070 when QNH is 977 hPa (733mm mercury column) or above, but less than 1013 hPa (760mm mercury column);  
- FL080 when QNH is less than 977 hPa (733mm mercury column).

BEARINGS AND TRACKS ARE MAGNETIC  
ALTITUDES IN FEET  
HEIGHTS IN METRES  
ELEVATIONS IN FEET AND METRES  
DISTANCES IN KILOMETRES

Alt set: - QNH (QFE on req);  
- hPa (mm on req).

CHANGE: Limiting bearing line withdrawn, URP705, URP713, URP739