

# TACAN Y RWY 16

TACAN KSY Chan <b>57</b>	APCH CRS <b>151°</b>	Rwy ldg <b>11,550</b> TDZE <b>690</b> Arprt Elev <b>690</b>
-----------------------------	-------------------------	-------------------------------------------------------------------

AL-371 [USAF]

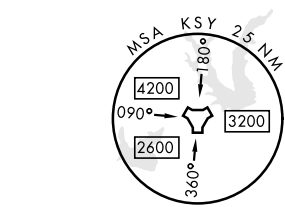
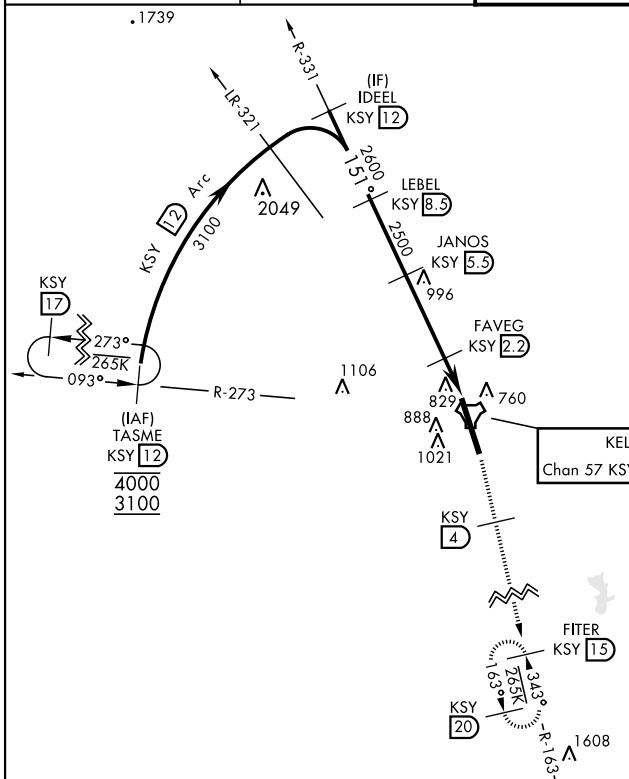
KELLY FLD (KSKF)

▼ \* When ALS inop, increase CAT AB RVR to 55 and vis to 1 mile, CAT CDE RVR to 60 and vis to 1½ miles.  
 \*\* Circling not authorized E of Rwy 16-34.

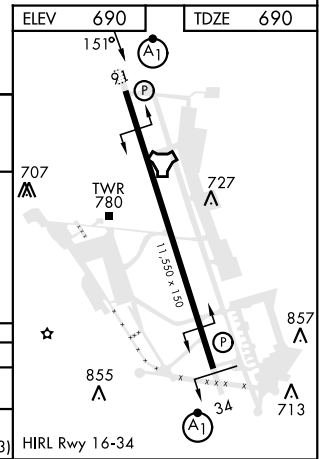
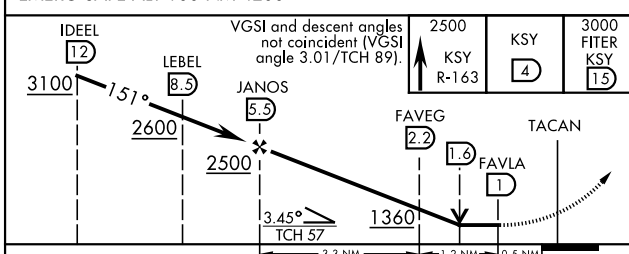


MISSED APPROACH: Climb on 2500 via KSY R-163 until 4 DME, then climb to 3000 to FITER/ 15 DME and hold.

ATIS <b>120.45 273.5</b>	SAN ANTONIO APP CON <b>118.05 353.5</b>	TOWER <b>124.3 322.35</b>	GND CON <b>121.8 289.4</b>
-----------------------------	--------------------------------------------	------------------------------	-------------------------------



EMERG SAFE ALT 100 NM 4200



CATEGORY	A	B	C	D	E
S-16 *	1100/24 410 (500-½)		1100/40 410		(500-¾)
CIRCLING **	1200-1 510 (600-1)	1280-1 590 (600-1)	1340-1¾ 650 (700-1¾)	1400-2¼ 710 (800-2¼)	1900-3 1210 (1300-3)

# TACAN Y RWY 16

SC-3, 20 MAR 2025 to 17 APR 2025

SC-3, 20 MAR 2025 to 17 APR 2025