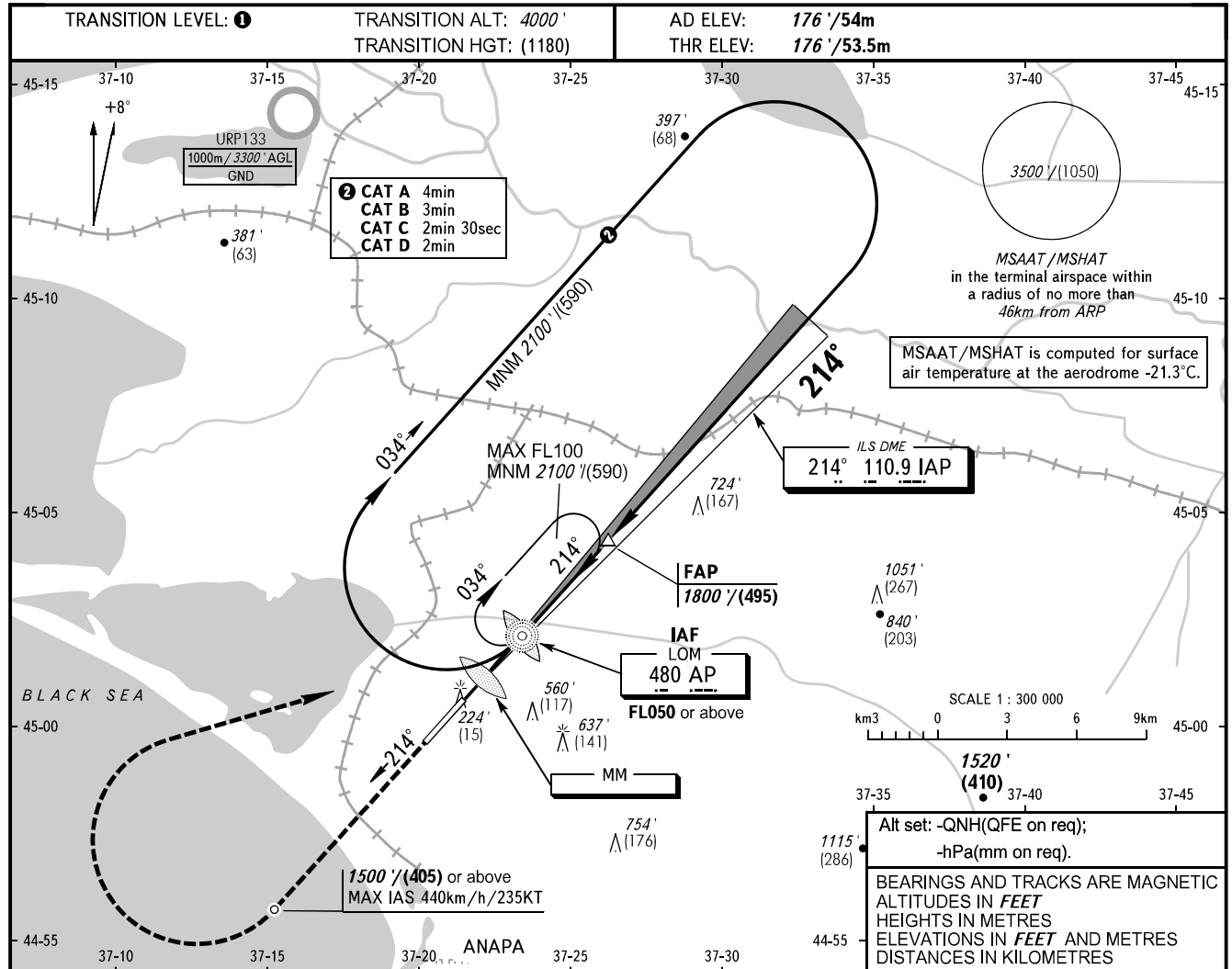


**INSTRUMENT
APPROACH
CHART - ICAO**

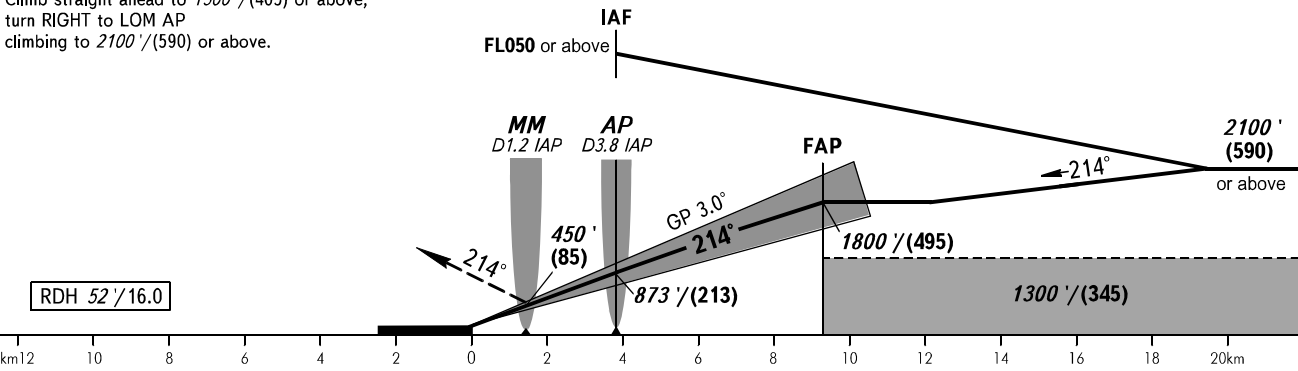
ANAPA RADAR **118.700**
ANAPA TOWER **119.800**

**ANAPA, RUSSIA
VITYAZEVO
ILS Y CAT I RWY 21**



MISSED APPROACH

Climb straight ahead to 1500' (405) or above,
turn RIGHT to LOM AP
climbing to 2100' (590) or above.



OCA(H)		A	B	C	D	1 TRANSITION LEVEL: - FL050 when QNH is 1013 hPa (760mm mercury column) or above; - FL060 when QNH is 977 hPa (733mm mercury column) or above, but less than 1013 hPa (760mm mercury column); - FL070 when QNH is less than 977 hPa (733mm mercury column). WARNING Zero range of DME IAP is indicated at RWY 21 THR.														
Straight-in	CAT I	314' (148') (43)	324' (148') (46)	335' (159') (49)	350' (174') (53)															
Approach																				
Circling		860' (680') (210)	940' (760') (235)	1040' (860') (265)	1150' (980') (300)															
GROUND SPEED	km/h		150	180	210	240	270	300	330	360	390									
	kt		81	97	113	130	146	162	178	194	211									
RATE OF DESCENT	m/s		2.2	2.6	3.0	3.5	3.9	4.3	4.8	5.2	5.6									
	ft / min		427	512	597	682	768	853	938	1024	1109									