

WAAS CH 72623 W07A	APP CRS 075°	Rwy Idg TDZE Apt Elev	5954 37 45
--	------------------------	-----------------------------	---------------------------------------

RNAV (GPS) RWY 7

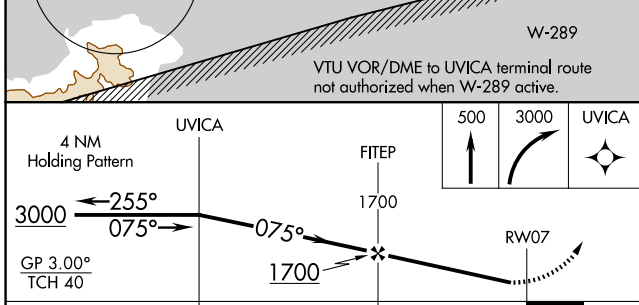
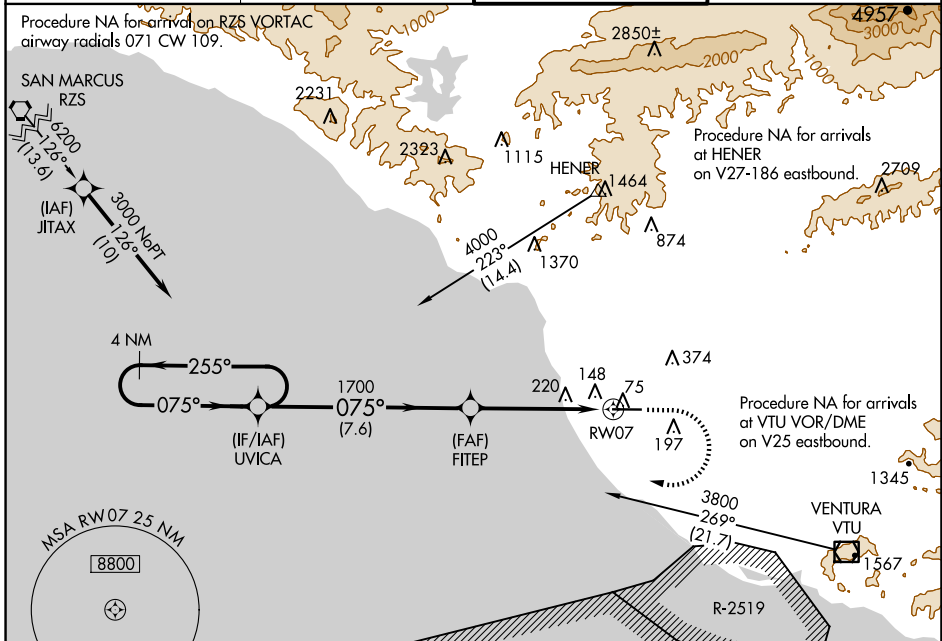
OXNARD (OXR)

RNP APCH-GPS.

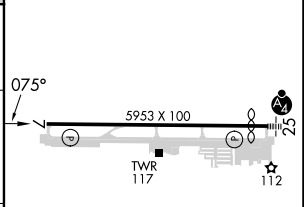
Baro-VNAV NA when using Camarillo altimeter setting. For uncompensated Baro-VNAV systems, LNAV/VNAV NA below -15°C or above 43°C. When local altimeter setting not received, use Camarillo altimeter setting and increase LPV DA to 305 feet, increase LNAV/VNAV DA to 337 feet; increase all MDAs 20 feet and Circling Cat C visibility ¼ SM.

MISSED APPROACH: Climb to 500, then climbing right turn to 3000 direct UVICA and hold.

ATIS 118.05	POINT MUGU APP CON* 124.7 335.5	OXNARD TOWER* 134.95 (CTAF) 257.8	GND CON 121.9
-----------------------	---	---	-------------------------



ELEV 45	TDZE 37
---------	---------



CATEGORY	A	B	C	D
LPV DA		287-1	250 (300-1)	
LNAV/VNAV DA		319-1	282 (300-1)	
LNAV MDA	480-1	443 (500-1)	480-1 ³ / ₈	443 (500-1 ³ / ₈)
CIRCLING	500-1 455 (500-1)	520-1 475 (500-1)	700-1 ³ / ₄ 655 (700-1 ³ / ₄)	760-2 ¹ / ₄ 715 (800-2 ¹ / ₄)

REIL Rwy 7

MRL Rwy 7-25

SW-3, 20 MAR 2025 to 17 APR 2025

SW-3, 20 MAR 2025 to 17 APR 2025