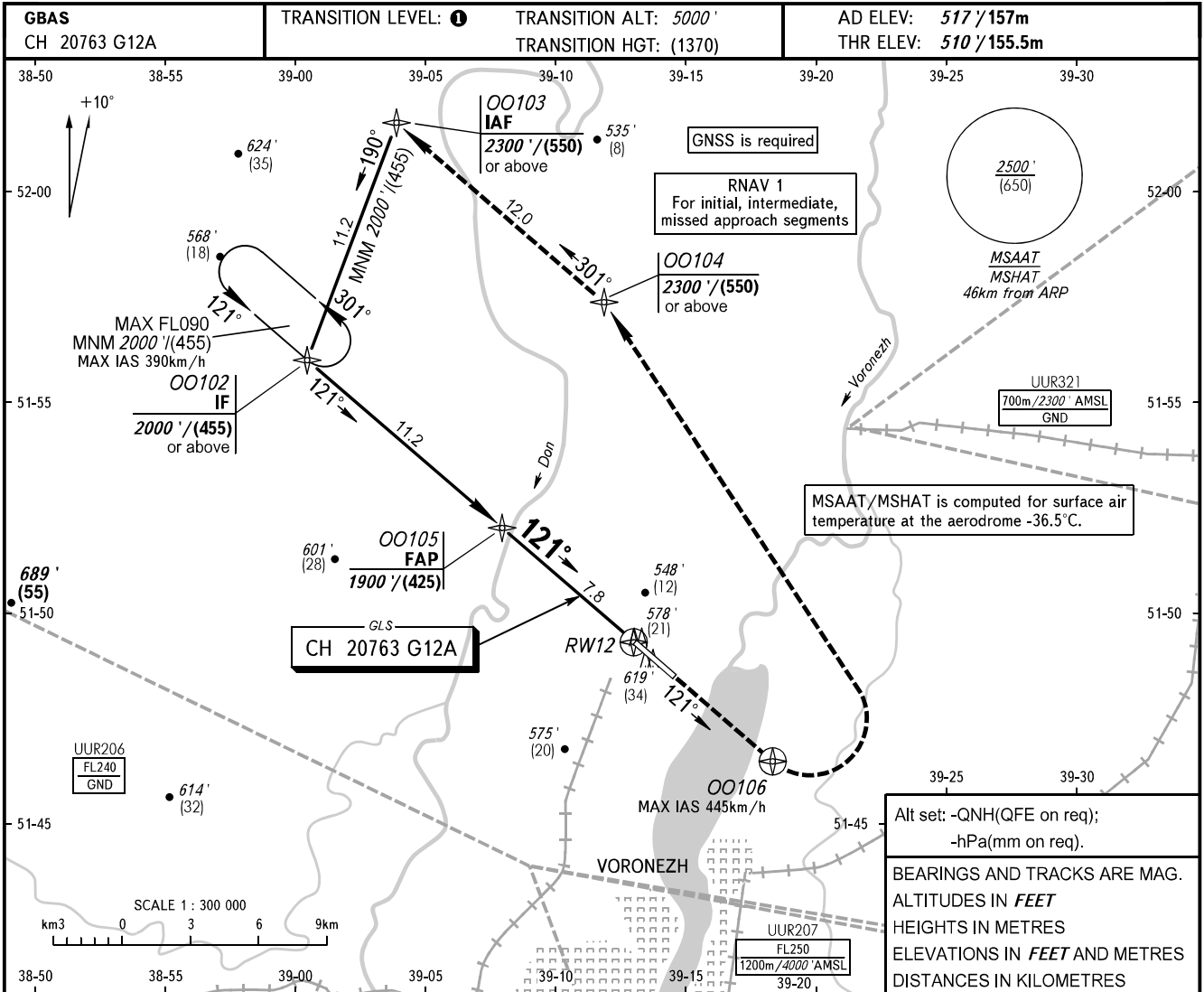


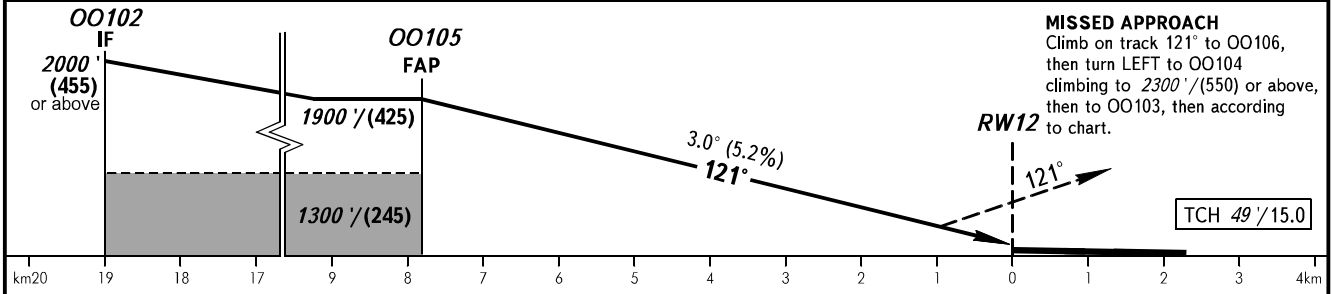
**INSTRUMENT
APPROACH
CHART - ICAO**

TOWER **118.300**

**VORONEZH, RUSSIA
CHERTOVITSKOYE
GLS RWY 12**



DIST to RW12	6.0	4.0	2.0
ALTITUDE/HEIGHT	1600' / (335)	1250' / (225)	910' / (120)



OCA(H)		A	B	C	D
Straight-in	2.5%*	707' (196') / (60)	720' (209') / (64)	728' (217') / (67)	738' (227') / (70)
	Approach				
Circling		1000' (478') / (150)	1010' (493') / (155)	1130' (606') / (185)	1210' (689') / (215)

1 TRANSITION LEVEL:
 - FL060 when QNH is 1013 hPa (760mm mercury column) or above;
 - FL070 when QNH is 977 hPa (733mm mercury column) or above, but less than 1013 hPa (760mm mercury column);
 - FL080 when QNH is less than 977 hPa (733mm mercury column).
 *MNM climb gradient for missed APCH.

GROUND SPEED	km/h	150	180	210	240	270	300	330	360	390	420	450
	m/s	2.2	2.6	3.0	3.5	3.9	4.3	4.8	5.2	5.6	6.1	6.5
RATE OF DESCENT	ft/min	427	512	597	682	768	853	938	1024	1109	1194	1280

CHANGE: New chart