

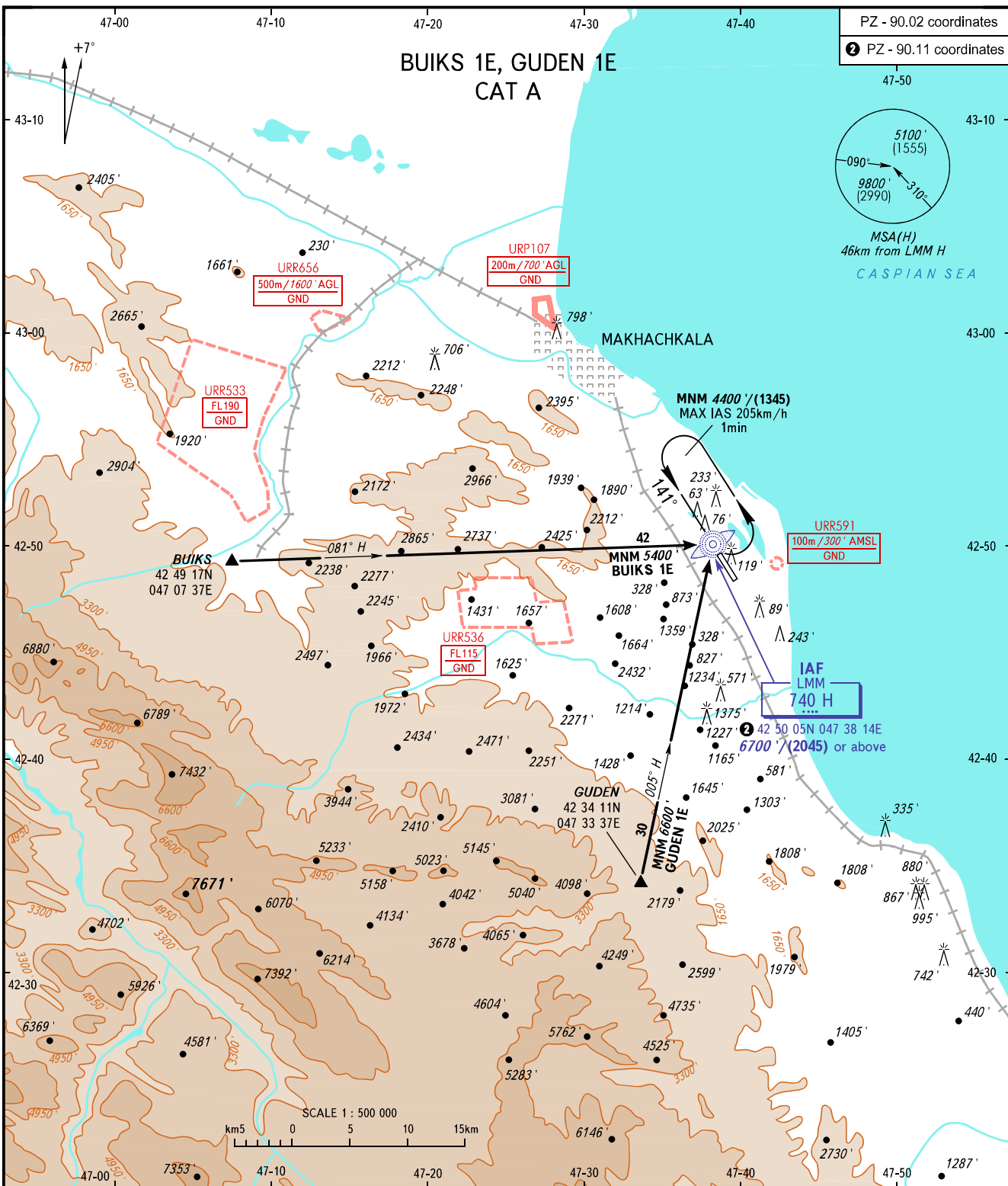
STANDARD ARRIVAL CHART  
INSTRUMENT (STAR) - ICAO

TRANSITION  
LEVEL: **1**

MAKHACHKALA, RUSSIA

UYTASH

RWY 14



APPROACH **119.700**  
RADAR **121.300**  
START **121.300**

- 1** TRANSITION LEVEL:
- FL110 when QNH is 1013 hPa (760mm mercury column) or above;
  - FL120 when QNH is 977 hPa (733mm mercury column) or above but less than 1013 hPa (760mm mercury column);
  - FL130 when QNH is less than 977 hPa (733mm mercury column).
- WARNING:**
1. BUIKS 1E is not AVBL when URR533, URR536 are active.
  2. Radar control is required when URR536 is active.

BEARINGS AND TRACKS ARE MAGNETIC  
ALTITUDES AND ELEVATIONS IN **FEET**  
HEIGHTS IN METRES  
DISTANCES IN KILOMETRES

Alt set: -QNH(QFE on req);  
-hPa(mm on req).

CHANGE: New chart