

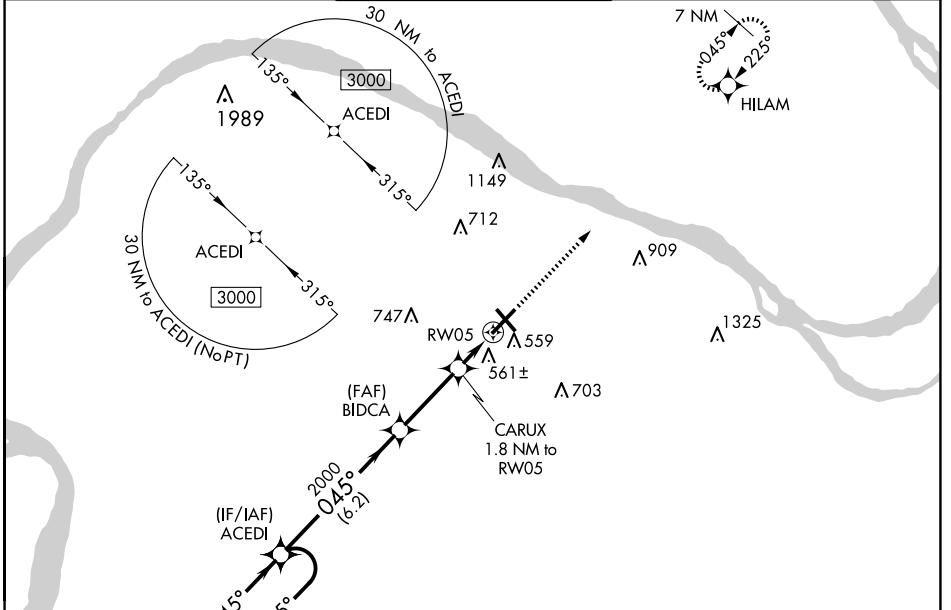
WAAS CH 93701 W05A	APP CRS 045°	Rwy Idg 6500 TDZE 411 Apt Elev 411
--	------------------------	---

RNAV (GPS) RWY 5

BARKLEY RGNL (PAH)

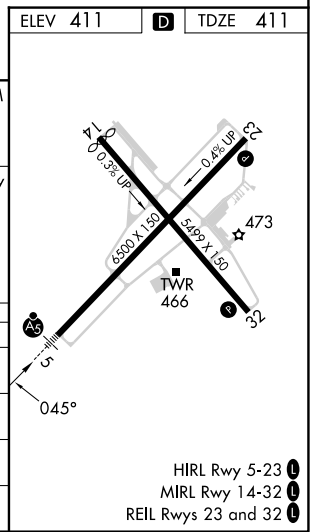
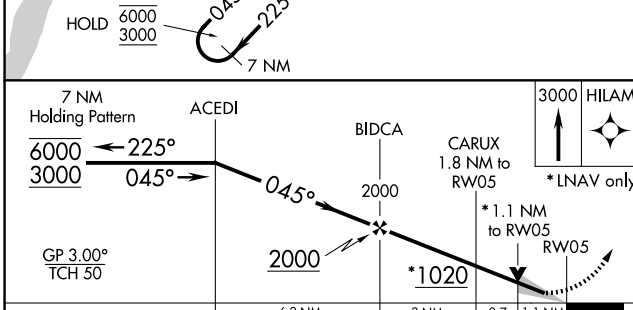
RNP APCH.	MALSR 	MISSED APPROACH: Climb to 3000 direct HILAM and hold.
<p>▼ For uncompensated Baro-VNAV systems, LNAV/VNAV NA below -15°C or above 54°C. ▲ For inop ALS, increase LNAV Cat C/D visibility to 1½ SM.</p>		

ASOS 118.375	MEMPHIS CENTER 133.65 292.15	PADUCAH TOWER * 119.6 (CTAF) 306.9	GND CON 121.7 306.9	UNICOM 122.95
------------------------	--	---	-------------------------------	-------------------------



SE-1, 20 MAR 2025 to 17 APR 2025

SE-1, 20 MAR 2025 to 17 APR 2025



CATEGORY	A	B	C	D
LPV DA		611-½	200 (200-½)	
LNAV/DA/VNAV		837-¾	426 (500-¾)	
LNAV MDA	820-½	409 (500-½)	820-¾	409 (500-¾)
C CIRCLING	900-1	489 (500-1)	920-1½	1100-2¼
			509 (600-1½)	689 (700-2¼)

HIRL Rwy 5-23
MIRL Rwy 14-32
REIL Rwy 23 and 32