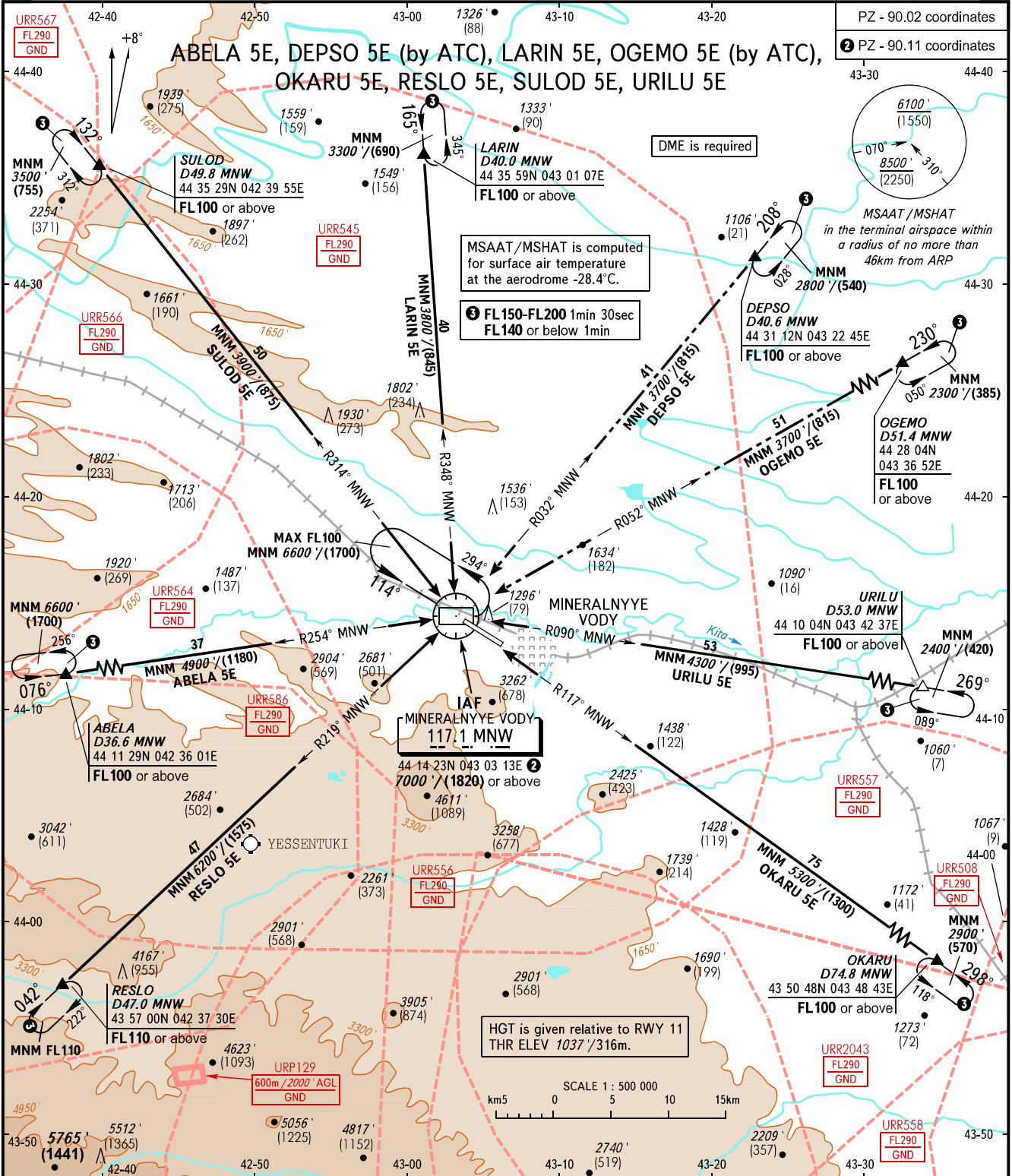


STANDARD ARRIVAL CHART
INSTRUMENT (STAR) - ICAO

TRANSITION
LEVEL: 1

MINERALNYYE VODY, RUSSIA
MINERALNYYE VODY
RWY 11/29



NOTE:
 ABELA 5E is not AVBL, when URR545, URR564, URR566, URR586, URR557 are active.
 DEPSO 5E, LARIN 5E, OGEMO 5E are not AVBL, when URR545 is active.
 OKARU 5E is not AVBL, when URR545, URR556, URR557, URR2043, URR558, URR508 are active.
 RESLO 5E is not AVBL, when URR545, URR564, URR562, URR586, URR556 are active.
 SULOD 5E is not AVBL, when URR545, URR566, URR567 are active.
 URILU 5E is not AVBL, when URR545, URR557 are active.

BEARINGS AND TRACKS ARE MAGNETIC
ELEVATIONS IN FEET AND METRES
ALTITUDES IN FEET
HEIGHTS IN METRES
DISTANCES IN KILOMETRES

Alt set: -QNH(QFE on req);
-hPa(mm on req).

1 TRANSITION LEVEL:
 - FL100 when QNH is 1013 hPa (760mm mercury column) or above;
 - FL110 when QNH is 977 hPa (733mm mercury column) or above,
 but less than 1013 hPa (760mm mercury column);
 - FL120 when QNH is less than 977 hPa (733mm mercury column).

CHANGE: New chart